

Skyjack Booms

Product Lineup Overview



Boom Model Lineup

Articulating Booms

SJ45 AJ+, SJ60 AJ+, SJ85 AJ



Electric Articulating Boom

SJ30 ARJE



Telescopic Booms

SJ40 T+, SJ45 T+, SJ61 T+, SJ66 T+, SJ82 T, SJ86 T



Simply Reliable

Focus on designing machines for the rental industry

- Competitive acquisition costs
- Consistently high residual values
- A reputation for robustness and reliability

Machine features combine durability, quality, and serviceability

- Meeting true job site performance expectations
- Accessible service points and straightforward troubleshooting

Simply Skyjack

Unique features found on and promoted on Skyjack booms

AXLDRIVE™

EASYDRIVE™

SMARTTORQUE™

SKYCODED™

SKYRISER™

SPEEDYREACH™





AXLDRIIVE™

True 4-wheel, “axle based” drive system providing unmatched traction, terrainability and up to 50% gradeability

Similar drive system found on wheel loaders and telehandlers

Dana axles provide superior performance with minimal maintenance or risk of downtime

ALL 40', 60' AND 80' MODELS

AXLDRIVE™

Front oscillating steer axle with limited slip differential

Fixed rear axle with operator controlled locking differential



ALL 40', 60' AND 80' MODELS

EASYDRIVE™

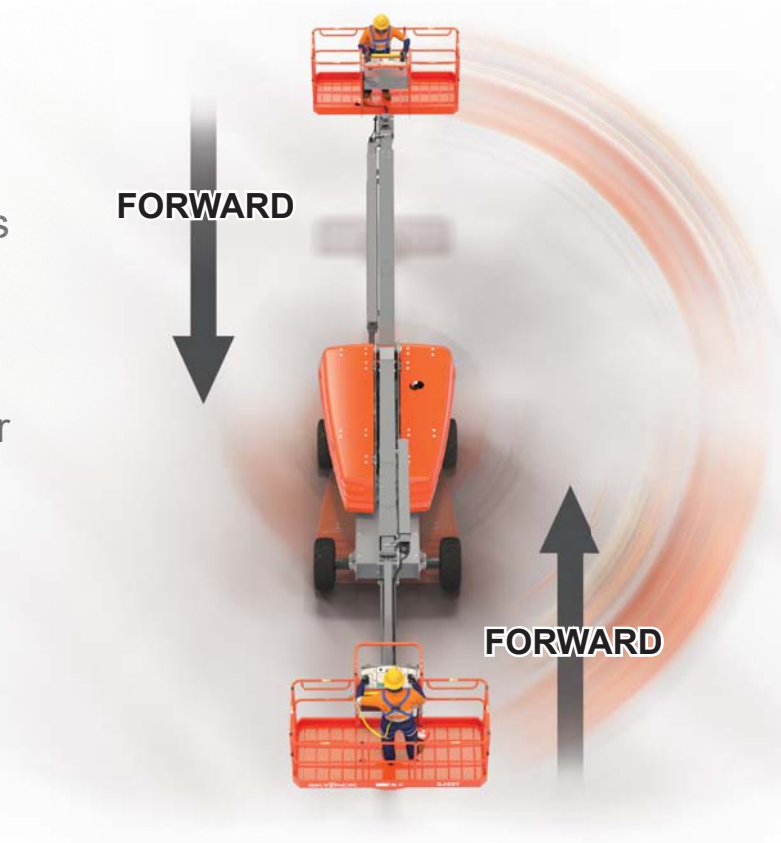
Drive controls always operate with respect to the orientation of the boom/counterweight - regardless of turret position

Direction sensing drive and steer controls reduce operator confusion and eliminate the need for color coded arrows and switches

Continuous drive feature prevents controls from reversing unexpectedly

No special enable switch required

ALL SKYJACK BOOMS



SMARTORQUE™

A balance of engine horse power, torque and hydraulic performance allows Skyjack to employ smaller horse power engines to deliver the same on site performance as a similar unit with a larger horse power engine

Less emission controlling components avoids the complexity, costs, maintenance and any downtime associated with them

SJ45 AJ+, SJ60 AJ+, SJ40 T+, SJ45 T+



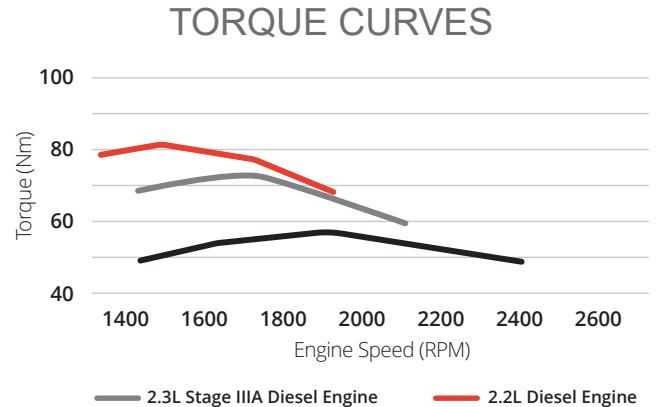
SMARTTORQUE™

Detailed studies using telematics data on machine usage identified a true pattern of operational usage

With over 50% of boom operations (drive or lift function) done in the mid-speed range, it was clear that the power being provided by the traditional engine size was not only underutilized, but not required

Additional in-depth research with customers, identified a balance where a revised design could be employed to suit operator practice without detrimentally affecting on-site machine performance

SJ45 AJ+, SJ60 AJ+, SJ40 T+, SJ45 T+



SMARTORQUE™

No DOC or associated costs with additional emission controls

Reduced engine OEM/Dealer intervention and associated downtime

Up to 40% fuel savings on 40' models, and up to 60% on 60' AJ

No reliance on ultra low sulfur fuel reduces costs and improves resale options

SJ45 AJ+, SJ60 AJ+, SJ40 T+, SJ45 T+





SKYCODED™

Skyjack's color coded and numbered wiring simplifies troubleshooting and repairs

As Skyjack's various control systems continue to evolve, this key feature continues to be an integral part of new developments

ALL SKYJACK BOOMS

SKYCODED™

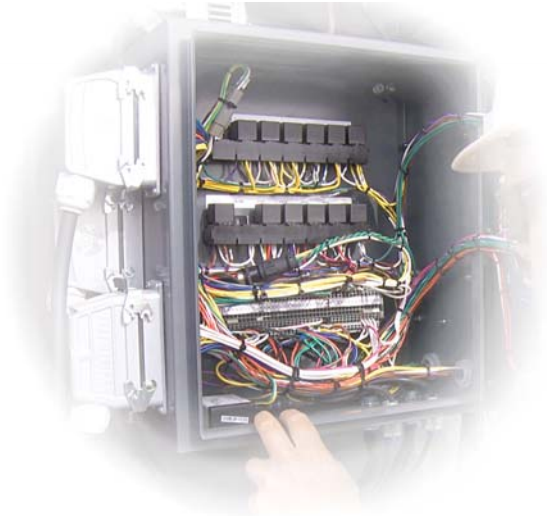
40' and 60' models feature dual controller based control system

- Simplified communication via CAN cable
- Integration with Elevate telematics provides more data points

SJ30 ARJE and 80' models use relay based control system

- Easy parts replacement

ALL SKYJACK BOOMS



SKYRISER™

On all Skyjack articulating booms, the pivot point connecting the main boom to the riser always travels in a straight vertical line

A true vertical rise means there is no forwards or backwards drift when lifting/lowering the riser, and subsequently no need for machine repositioning when working close to structures

ALL SKYJACK ARTICULATING BOOMS

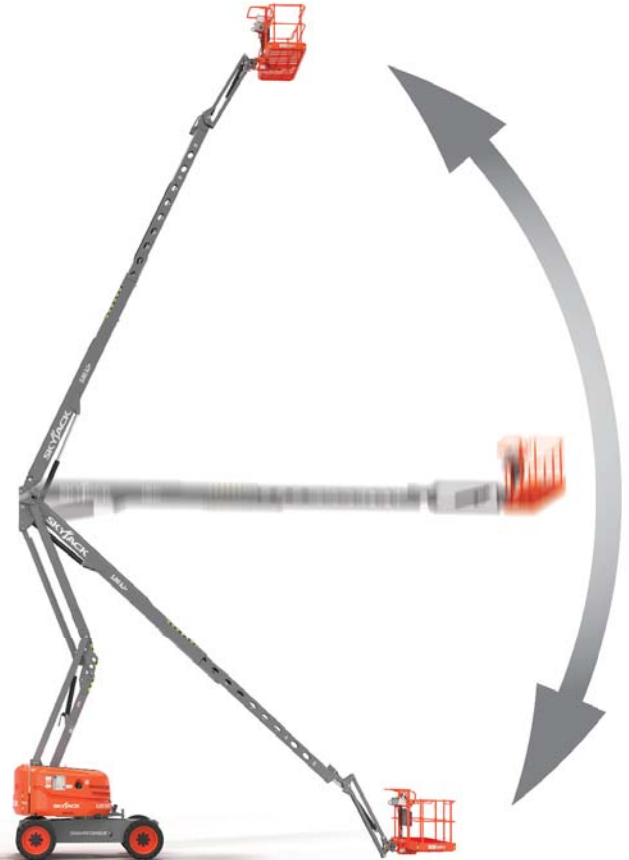


SPEEDYREACH™

Combination of riser design and fly boom reach allows operator to cycle between maximum height and ground level without engaging the riser section

Eliminating the riser from the sequence saves time, repositioning or remembering which sequence of functions were used to move between positions

SJ60 AJ+, SJ85 AJ



Common Features

Similar base machine layout

Accessible and well protected components

Filters

Manifolds

Pumps

Control box

Hydraulic/fuel tank

Single turret grease point

Lockable battery disconnect



Common Features

Modular platform design

Individual bolt-in platform railing sections provide a durable structure while also reducing parts and labor costs for replacement

Drop bar entry standard on all models

- Single entry on SJ30 ARJE
- Dual entry on SJ45 AJ+
- Tri-entry on all other models

Foot enable switch with 7 second time out



Common Features

Secondary Guarding

Sensor bar instantly stops all functions and initiates an audible siren and high-intensity flashing beacon

Reset button on platform control box

Inadvertent contact (< 1 second) will only temporarily stop functions - full reset not required



Common Features

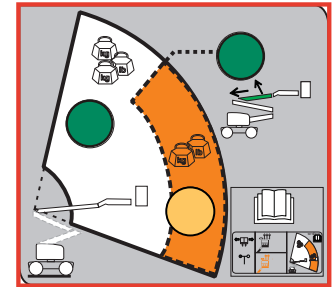
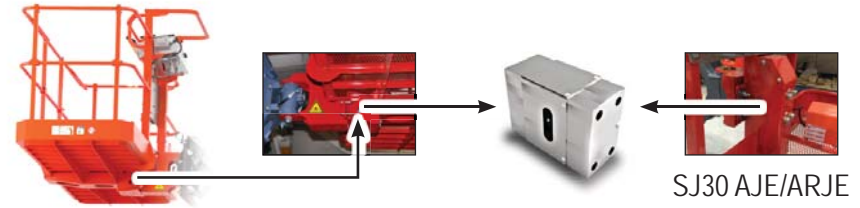
Load Sensing

Moba loadcell located under platform

Load-bearing connection between platform rotator and platform

Pressure on connection sends voltage signal to controller representing corresponding load

Built-in redundancy to compensate for different environmental conditions and pressure spikes



Common Features

Increased platform capacities

More personnel and material in the platform

660 lbs - SJ45 AJ+

500/750 lbs - SJ85 AJ, SJ82 T, SJ86 T

660/1000 lbs - SJ60 AJ+ SJ40 T+, SJ45 T+, SJ61 T+, SJ66 T+



SJ30 ARJE

Rotating jib

Lightest machine in class - over 2,200 lb lighter than competition

Most efficient machine in class - over 10 hours of continuous operation

Smooth functions

Main boom, riser linkage allow for extension cylinder removal without interference or boom disassembly



SJ30 ARJE

Direct electric AC drive motors

Angle selector adjusts wheel speeds when turning, minimizing loss of traction while preventing unnecessary tire scrubbing

35% gradeability

Multifunction capability when lifting



Telescope Booms

Up to 50% gradeability

80' models utilize linkage system that pulls main pivot point forward, pulling center of gravity forward when lifting - optimizing reach and weight

Speed adjustment dial in platform for toggle switch controlled functions

Cable and pulley design (60' and 80' models) allows for quick inspection and replacement without full disassembly



Articulating Booms

Up to 45% gradeability

40'/60' models feature class leading machine weights - supports Smartorque and shipping configurations

60'/80' models feature open center knuckle design - supports reach envelope and compact stowed dimensions



Options and Accessories

Attachments - Glazier kit, pipe rack, tool caddy

- Platform de-rate switch on '+' models for attachments
- Switch is standard on every '+' machine
- Backwards compatible
- Interchangeable between models

Power - 3.5kw and 12kw generators

Engines - Diesel and dual fuel engines

Weather packages

Non-marking tires

Flashing Light

Entry gates

Elevate telematics

