



TABLE OF CONTENTS

PRICING AT A GLANCE

VERTICAL MAST AND SCISSOR LIFTS	2
BOOM LIFTS	4
TELEHANDLERS	6

FEATURES, SPECIFICATIONS, AND PRICING

VERTICAL MAST LIFTS	7-12
DC ELECTRIC SCISSOR LIFTS	13-24
ROUGH TERRAIN SCISSOR LIFTS	25-32
ARTICULATING BOOM LIFTS	33-42
TELESCOPIC BOOM LIFTS	43-50
TELEHANDLERS	51-66
ELEVATE	67-68
PRODUCT FEATURE TRADEMARKS	73-74
ACCESSORYZERS™ & AFTERMARKET OPTIONS	75-76

SALES AND SUPPORT

WARRANTY	69-71
PARTS PURCHASING AND RETURNS	72



PRICING AT A GLANCE VERTICAL MAST AND SCISSOR LIFTS

LIST PRICING (USD) EFFECTIVE JANUARY 1ST, 2025

PRICE LIST (USD)

MODEL	PLATFORM HEIGHT	CAPACITY	OVERALL WIDTH	OVERALL LENGTH	STOWED HEIGHT <small>(ralls down on scissors)</small>	PLATFORM SIZE	PRICE*
VERTICAL MAST LIFTS							
SJ12 E	12' (3.66 m)	500 lbs (227 kg)	30.5" (0.78 m)	54" (1.37 m)	70" (1.78 m)	27" x 33.5" (0.69 m x 0.86 m)	\$22,230
SJ16 E	15' 6" (4.72 m)	500 lbs (227 kg)	30.5" (0.78 m)	54" (1.37 m)	70" (1.78 m)	27" x 33.5" (0.69 m x 0.86 m)	\$24,335
SJ20 E	19' 6" (5.94 m)	350 lbs (159 kg)	31.5" (0.80 m)	54" (1.37 m)	79.5" (2.0 m)	27" x 36" (0.69 m x 0.91 m)	\$30,230
DC ELECTRIC SCISSOR LIFTS							
SJ3213 micro	13' (3.96 m)	500 lbs (227 kg)	32" (0.81 m)	60" (1.5 m)	75.8" (1.9 m)	27.5" x 60" (0.7 m x 1.5 m)	\$22,560
SJ3219 micro	18' 1" (5.5 m)	500 lbs (227 kg)	32" (0.81 m)	60" (1.5 m)	79.5" (2.0 m)	27.5" x 60" (0.7 m x 1.5 m)	\$23,855
SJ3215 E	14' 7" (4.44 m)	600 lbs (272 kg)	32" (0.81 m)	71" (1.80 m)	66" (1.67 m)	25" x 61" (0.64 m x 1.54 m)	\$22,560
SJ3219 E	18' 6" (5.64 m)	500 lbs (227 kg)	32" (0.81 m)	71" (1.80 m)	79.60" (2.01 m)	25" x 61" (0.64 m x 1.54 m)	\$23,855
SJ3220 E	19' 6" (5.95 m)	900 lbs (408 kg)	32" (0.81 m)	91.6" (2.32 m)	69" (1.75 m)	28" x 83" (0.71 m x 2.11 m)	\$28,130
SJ3226 E	25' 7" (7.79 m)	500 lbs (227 kg)	32" (0.81 m)	91.6" (2.32 m)	76" (1.93 m)	28" x 83" (0.71 m x 2.11 m)	\$33,125
SJ4726 E	25' 8" (7.82 m)	1,000 lbs (454 kg)	47" (1.19 m)	91.6" (2.32 m)	75" (1.90 m)	42" x 83" (1.07 m x 2.11 m)	\$35,295
SJ4732 E	31' 8" (9.65 m)	700 lbs (318 kg)	47" (1.19 m)	91.6" (2.32 m)	78.5 (1.99 m)	42" x 83" (1.07 m x 2.11 m)	\$42,490
SJ4740 E	38' 11" (11.86 m)	770 lbs (349 kg)	47" (1.19 m)	95.2" (2.41 m)	79.8" (2.03 m)	42" x 86" (1.07 m x 2.19 m)	\$57,055
ROUGH TERRAIN SCISSOR LIFTS							
SJ6826 RT	26' (7.92 m)	1,250 lbs (567 kg)	69.5" (1.76 m)	107" (2.72 m)	63.5" (1.61 m)	56" x 96" (1.42 m x 2.44 m)	\$65,410
SJ6832 RT	32' (9.75 m)	1,000 lbs (454 kg)	69.5" (1.76 m)	107" (2.72 m)	69" (1.75 m)	56" x 96" (1.42 m x 2.44 m)	\$72,815
SJ9233 RT	33' (10.06 m)	2,750 lbs (1,247 kg)	90.6" (2.30 m)	177" (4.50 m)	77" (1.96 m)	71.65" x 171.7" (1.82 m x 4.36 m)	\$114,495
SJ9243 RT	43' (13.11 m)	2,000 lbs (907 kg)	90.6" (2.30 m)	177" (4.50 m)	85" (2.16 m)	71.65" x 171.7" (1.82 m x 4.36 m)	\$118,115
SJ9253 RT	53' (16.15 m)	1,500 lbs (680 kg)	90.6" (2.30 m)	177" (4.50 m)	94" (2.39 m)	71.65" x 171.7" (1.82 m x 4.36 m)	\$147,625
SJ9664 RT	64' (19.51 m)	1,130 lbs (513 kg)	96" (2.44 m)	176" (4.47m)	109.5" (2.78 m)	76" x 172.5" (1.92 m x 4.38 m)	\$183,935

* Based on standard configuration



PRICING AT A GLANCE BOOM LIFTS

LIST PRICING (USD) EFFECTIVE JANUARY 1ST, 2025

PRICE LIST (USD)

TELESCOPIC BOOM LIFTS						
MODEL	PLATFORM HEIGHT	JIB	CAPACITY	HORIZONTAL REACH	PLATFORM SIZE (INSIDE)	PRICE*
SJ40 T+	40' 7" (12.37 m)	-	750 / 1,000 lbs (340 / 454 kg)	33' 11" (10.34 m)	36" x 96" (0.91 m x 2.44 m)	\$148,915
SJ45 T+	45' 1.5" (13.75 m)	5' (1.52 m)	660 / 1,000 lbs (300 / 454 kg)	39' 8.25" (12.10 m)	36" x 96" (0.91 m x 2.44 m)	\$161,410
SJ61 T+	61' 8" (18.80 m)	-	660 / 1,000 lbs (300 / 454 kg)	51' 3" (15.62 m)	36" x 96" (0.91 m x 2.44 m)	\$212,965
SJ66 T+	66' 3" (20.19 m)	5' (1.52 m)	660 / 1,000 lbs (300 / 454 kg)	57' 0.25" (17.38 m)	36" x 96" (0.91 m x 2.44 m)	\$224,945
SJ82 T	82' (24.99 m)	-	500 / 750 lbs (227 / 341 kg)	72' 6" (22.10 m)	36" x 96" (0.91 m x 2.44 m)	\$295,315
SJ86 T	86' (26.21 m)	5' 6" (1.68 m)	500 / 750 lbs (227 / 341 kg)	76' 10" (23.42 m)	36" x 96" (0.91 m x 2.44 m)	\$307,590

ARTICULATING BOOM LIFTS							
MODEL	PLATFORM HEIGHT	JIB	CAPACITY	HORIZONTAL REACH	UP-AND-OVER HEIGHT	PLATFORM SIZE (INSIDE)	PRICE*
SJ30 ARJE	29' 6" (9.00 m)	4' 1" (1.25 m)	500 lbs (227 kg)	20' 7" (6.26 m)	13' 1" (3.99 m)	30" x 46" (0.76 m x 1.17 m)	\$103,850
SJ45 AJ+	45' (13.72 m)	4' 8" (1.40 m)	660 lbs (300 kg)	22' 9" (6.93 m)	24' 5.25" (7.45 m)	30" x 72" (0.76 m x 1.83 m)	\$136,025
SJ60 AJ+	60' (18.29 m)	5' (1.52 m)	660 / 1,000 lbs (300 / 454 kg)	37' 11" (11.56 m)	27' 2" (8.31 m)	36" x 96" (0.91 m x 2.44 m)	\$198,650
SJ85 AJ	85' (25.91 m)	5' 6" (1.68 m)	500 / 750 lbs (227 / 341 kg)	56' (17.07 m)	34' (10.36 m)	36" x 96" (0.91 m x 2.44 m)	\$291,430

* Based on standard configuration



PRICING AT A GLANCE TELEHANDLERS

LIST PRICING (USD) EFFECTIVE JANUARY 1ST, 2025

PRICE LIST (USD)

TELEHANDLERS							
MODEL	MAX LIFT CAPACITY	MAX LIFT HEIGHT	CAPACITY @ MAX LIFT HEIGHT	MAX FORWARD REACH	CAPACITY @ MAX FORWARD REACH	ENGINE	PRICE*
SJ519 TH	5,500 lbs (2,495 kg)	19' 1" (5.82m)	4,400 lbs (1,996 kg)	11' 3" (3.44 m)	2,000 lbs (907 kg)	74hp/184 lb-ft Deutz TCD 2.2L	\$96,790
SJ643 TH	6,000 lbs (2,722 kg)	43' 4" (13.2 m)	6,000 lbs (2,722 kg)	28' 7" (8.71 m)	1,000 lbs (454 kg)	74 hp/221 lb-ft Deutz TCD 2.2L	\$147,660
SJ843 TH	8,000 lbs (3,629 kg)	43' 4" (13.2 m)	6,000 lbs (2,722 kg)	28' 7" (8.71 m)	1,900 lbs (862 kg)	74 hp/221 lb-ft Deutz TCD 2.2L	\$159,245
SJ1044 TH	10,000 lbs (4,535 kg)	44' 3" (13.49 m)	7,000 lbs (3,175 kg)	29' 4" (8.94 m)	1,800 lbs (816 kg)	74hp/287 lb-ft Deutz TCD 3.6L	\$180,250
SJ1056 TH	10,000 lbs (4,535 kg)	56' 3" (17.14 m)	6,000 lbs (2,722 kg)	42' 2" (12.85 m)	3,000 lbs (1,361 kg)	74hp/287 lb-ft Deutz TCD 3.6L	\$203,080
SJ1256 THS	12,000 lbs (5,443 kg)	56' 3" (17.14 m)	7,000 lbs (3,175 kg)	42' 4" (12.90 m)	3,500 lbs (1,588 kg)	107hp / 320 lb-ft Deutz TCD 3.6L	\$237,180
ZB2044	20,000 lbs (9,072 kg)	44' 10" (13.7 m)	12,000 lbs (5,443 kg)	27' 5" (8.4 m)	7,000 lbs (3,175 kg)	168hp Cummins QSB 4.5	\$467,310

* Based on standard configuration

VERTICAL MAST LIFTS

SPECIFICATIONS, FEATURES, AND PRICING



SJ12/16 E



SJ20 E

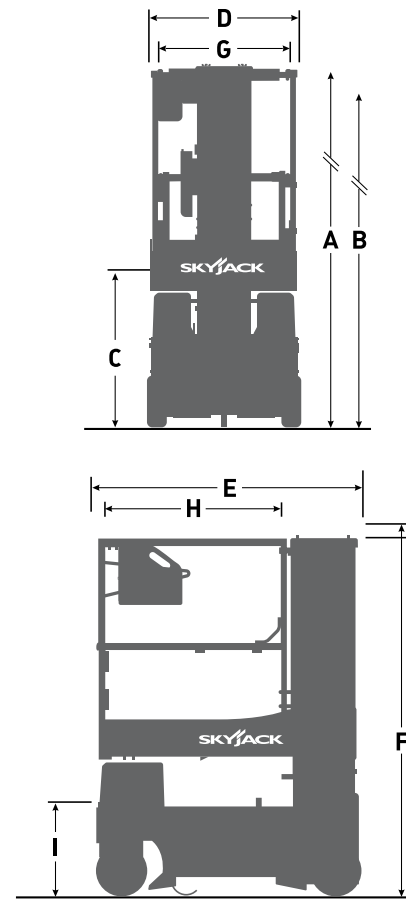


SJ12 /16 E

VERTICAL MAST LIFTS

ANSI A92.20 AND CSA B354.6 COMPLIANT

Dimensions	SJ12 E	SJ16 E
A Work Height	18' (5.48 m)	21' 6" (6.55 m)
B Raised Platform Height	12' (3.66 m)	15' 6" (4.72 m)
C Lowered Platform Height	30" (0.76 m)	
D Overall Width	30.5" (0.77 m)	
E Overall Length	54" (1.37 m)	
F Stowed Height (Top of Mast)	74" (1.88 m)	
G Platform Width (Inside Dimension)	27" (0.69 m)	
H Platform Length (Inside Dimension)	36" (0.91 m)	
I Step in Height (First Step)	18" (0.46 m)	
Specifications	SJ12 E	SJ16 E
Traversing Platform (Roll Out)	16" (0.41 m)	
Ground Clearance (Lowest Point)	1" (2.54 cm)	
Ground Clearance (Highest Point)	3.5" (9 cm)	
Wheelbase	44" (1.12 m)	
Weight	2,012 lbs (913 kg)	2,054 lbs (931 kg)
Gradeability	25%	
Turning Radius (Inside)	0	
Turning Radius (Outside)	55" (1.40 m)	
Lift Time (With Rated Load)	15 sec	21 sec
Lower Time (With Rated Load)	16 sec	22 sec
Drive Speed (Stowed)	2 mph (3 km/h)	
Drive Speed (Raised)	0.3 mph (0.5 km/h)	
Maximum Drive Height	Full Height	
Capacity (Overall)	500 lbs (227 kg)	
Local Floor Load (With Rated Load)	154 psi (1059 kPa)	169 psi (1167 kPa)
Overall Floor Load (With Rated Load)	212 psf (10.1 kPa)	217 psf (10.4 kPa)
Maximum # of Persons at 0 mph (0 m/s) Wind Rating	2	1
Maximum # of Persons up to 28 mph (12.5 m/s) Wind Rating	1	0 (Optional 1)
Tire Type	Solid, Non-Marking	
Tire Size	10" x 4" (252 mm x 102 mm)	



VERTICAL MAST LIFTS

LIST PRICING (USD) EFFECTIVE JANUARY 1ST, 2025

SJ12 E \$22,230

- 12' (3.66 m) Raised platform height
- 500 lbs (227 kg) Capacity
- 30.5" (0.77 m) Overall width
- 54" (1.37 m) Overall length
- 74" (1.88 m) Stowed height (Top of Mast)
- 26.5" x 37" (0.67 x 0.94 m) Platform size (inside)

SJ16 E \$24,335

- 15'6" (4.72 m) Raised platform height
- 500 lbs (227 kg) Capacity
- 30.5" (0.77 m) Overall width
- 54" (1.37 m) Overall length
- 74" (1.88 m) Stowed height
- 26.5" x 37" (0.67 x 0.94 m) Platform size (inside)

Standard Features

- Overload sensing system
- Drivable at full height with platform retracted
- Variable speed, front two wheel electric drive
- 90° Steering (zero inside turning radius)
- Dual holding brakes
- On-board visual interface with diagnostic capabilities
- Shroud style, impact resistant composite control box
- Proportional controls for drive & lift functions
- 16" (0.41 m) Traversing platform
- Multistage lift cylinders
- 24V DC power source
- 2 x 12V batteries
- Low voltage battery protection
- 25% Gradeability
- Solid rubber, non-marking tires
- Fixed pothole protection system
- 110V AC outlet at platform with GFI
- 28 mph (12.5 m/s) wind rating (SJ12 E only)
- Tilt sensor (2.5° x 1.5°)
- Tilt alarm with drive & lift cut-out
- All motion audible alarm
- Lanyard attachment points
- Operator horn
- Lift rings/tie downs
- Half height spring hinged entry gate
- Removable oil filter
- Telematics ready
- 2 Year Gold Leaf Warranty (5 year structural warranty)

Options†

Dual flashing lights	\$645
4 x 6V batteries.....	\$340
AGM batteries	\$1,495
Saloon gate	\$490
ECOTRAY leak containment system	\$850
Bio oil.....	\$535
28mph (12.5 m/s) wind rating kit to 12ft (SJ16 E only).....	\$1,140
Secondary guarding lift enable (SGLE)	\$180
Non destructive testing	\$1,595
White noise alarm	\$345
Perimeter Lights.....	\$945

Accessories‡

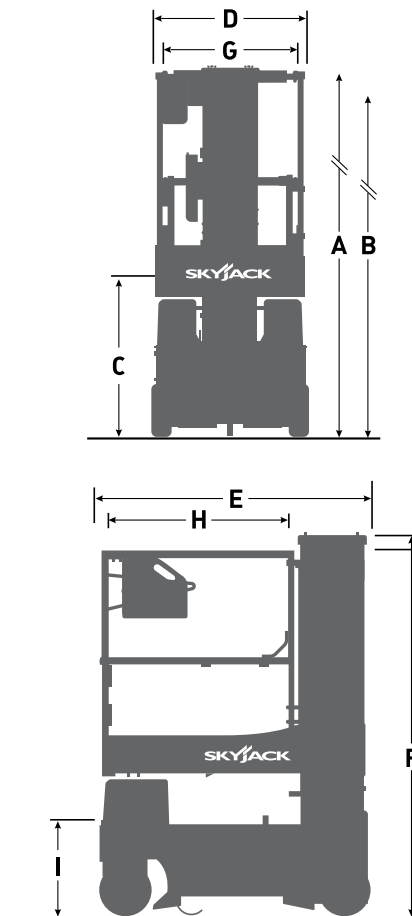
Please see page 75 for available aftermarket accessories.

SJ20 E

VERTICAL MAST LIFTS

ANSI A92.20 AND CSA B354.6 COMPLIANT

Dimensions	SJ20 E
A Work Height	25' 6" (7.77 m)
B Raised Platform Height	19' 6" (5.94 m)
C Lowered Platform Height	30" (0.76 m)
D Overall Width	31.5" (0.80 m)
E Overall Length	54" (1.37 m)
F Stowed Height (Top of Mast)	79.5" (2.0 m)
G Platform Width (Inside Dimension)	27" (0.69 m)
H Platform Length (Inside Dimension)	36" (0.91 m)
I Step in Height (First Step)	18" (0.46 m)
Specifications	SJ20 E
Traversing Platform (Roll Out)	16" (0.41 m)
Ground Clearance (Lowest point)	1" (2.54 cm)
Ground Clearance (Highest point)	3.5" (9 cm)
Wheelbase	44" (1.12 m)
Weight	2,440 lbs (1,107 kg)
Gradeability	25%
Turning Radius (Inside)	0
Turning Radius (Outside)	55" (1.40 m)
Lift Time (With Rated Load)	26 sec
Lower Time (With Rated Load)	26 sec
Drive Speed (Stowed)	2 mph (3 km/h)
Drive Speed (Raised)	0.3 mph (0.5 km/h)
Maximum Drive Height	Full Height
Capacity (Overall)	350 lbs (159 kg)
Local Floor Load (With Rated Load)	148 psi (1,021 kPa)
Overall Floor Load (With Rated Load)	237 psf (11.3 kPa)
Maximum # of Persons at 0 mph (0 m/s) Wind Rating	1
Maximum # of Persons up to 28 mph (12.5 m/s) Wind Rating	0 (Optional 1)
Tire Type	Solid, N/M
Tire Size	10 x 4



VERTICAL MAST LIFTS

LIST PRICING (USD) EFFECTIVE JANUARY 1ST, 2025

SJ20 E **\$30,230**

- 19' 6" (5.94 m) Raised platform height
- 350 lbs (159 kg) Capacity
- 31.5" (0.80 m) Overall width
- 54" (1.37 m) Overall length
- 79" (2.00 m) Stowed height
- 26.5" x 37" (0.67 x 0.94 m) Platform size (inside)

Standard Features

- Overload sensing system
- Drivable at full height with platform retracted
- Variable speed, front two wheel electric drive
- 90° Steering (zero inside turning radius)
- Dual holding brakes
- On-board visual interface with diagnostic capabilities
- Shroud style, impact resistant composite control box
- Proportional controls for drive & lift functions
- 16" (0.41 m) Traversing platform
- Multistage lift cylinders
- 24V DC power source
- 2 x 12V batteries
- Low voltage battery protection
- 25% Gradeability
- Solid rubber, non-marking tires
- Fixed pothole protection system
- 110V AC outlet at platform with GFI
- Tilt sensor (2.5° x 1.5°)
- Tilt alarm with drive & lift cut-out
- All motion audible alarm
- Lanyard attachment points
- Operator horn
- Lift rings/tie downs
- Half height spring hinged entry gate
- Removable oil filter
- Telematics ready
- 2 Year Gold Leaf Warranty (5 year structural warranty)

Options†

Dual flashing lights	\$645
4 x 6V batteries.....	\$340
AGM batteries	\$1,495
Saloon gate	\$490
ECOTRAY leak containment system	\$850
Bio oil.....	\$535
28mph (12.5 m/s) wind rating kit to 13ft.....	\$1,140
Secondary guarding lift enable (SGLE)	\$180
Non destructive testing	\$1,595
White noise alarm	\$345
Perimeter Lights.....	\$945

Accessories‡

Please see page 75 for available aftermarket accessories.

DC ELECTRIC SCISSOR LIFTS

SPECIFICATIONS, FEATURES, AND PRICING



SJ3213/19 micro



SJ3215/19 E



SJ3220/26 E



SJ4726/32 E



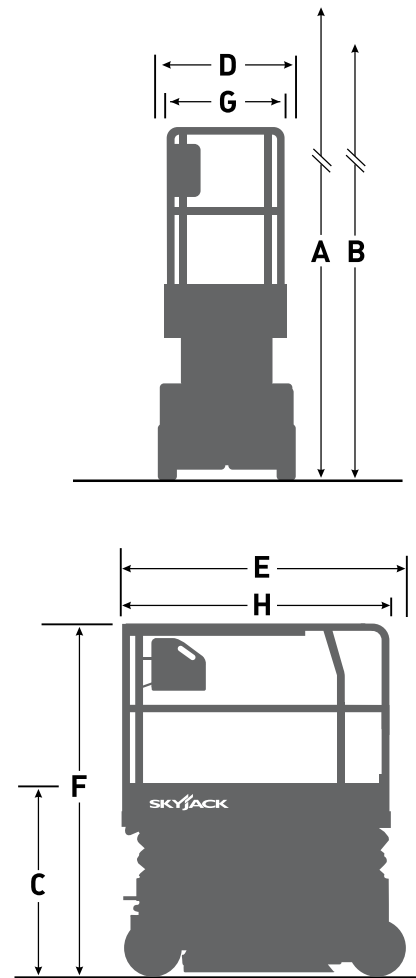
SJ4740 E

SJ3213/19 micro

DC ELECTRIC SCISSOR LIFTS

ANSI A92.20 AND CSA B354.6 COMPLIANT

Dimensions	SJ3213 micro	SJ3219 micro
A Work Height	19' (5.8 m)	24' 1" (7.3 m)
B Raised Platform Height	13' (3.96 m)	18' 1" (5.5 m)
C Lowered Platform Height	32" (0.81 m)	36" (0.91 m)
D Overall Width	32" (0.81 m)	32" (0.81 m)
E Overall Length	60" (1.5 m)	60" (1.5 m)
F Stowed Height (Rails Up)	75.8" (1.9 m)	79.5" (2.0 m)
G Platform Width (Outside Dimension)	27.5" (0.7 m)	27.5" (0.7 m)
H Platform Length (Outside Dimension)	60" (1.5 m)	60" (1.5 m)
Specifications	SJ3213 micro	SJ3219 micro
Extension Deck (Roll Out)	20" (0.5 m)	
Ground Clearance (Lowest Point)	1" (2.5 cm)	
Ground Clearance (Highest Point)	3.25" (8 cm)	
Wheelbase	49.5" (1.26 m)	
Weight	1,897 lbs (861 kg)	2,675 lbs (1,214 kg)
Gradeability	25%	
Turning Radius (Inside)	2.5" (6.4 cm)	
Turning Radius (Outside)	64.7" (1.64 m)	
Lift Time (With Rated Load)	25 sec	25 sec
Lower time (With Rated Load)	18 sec	26 sec
Drive Speed (Stowed)	2.1 mph (3.4 km/h)	
Drive Speed (Raised)	0.4 mph (0.6 km/h)	
Maximum Drive Height (Indoor)	Full Height	
Maximum Drive Height (Outdoor)	12' (3.65 m)	16' (4.87 m)
Capacity (Overall)	500 lbs (227 kg)	
Distributed Capacity (Extension Deck)	220 lbs (99.5 kg)	
Ground Bearing Pressure (With Rated Load)	103 psi (710 kPa)	117 psi (807 kPa)
Overall Floor Load (With Rated Load)	178 psf (8.5 kPa)	235 psf (11.3 kPa)
Maximum # of persons at 0 mph (0 m/s) wind rating	2	
Maximum # of persons up to 28 mph (12.5 m/s) wind rating	1 Up to 12' (3.65 m)	1 Up to 16' (4.87 m)
Tire Type	Solid, N/M	
Tire Size	10 x 4	



DC ELECTRIC SCISSOR LIFTS

LIST PRICING (USD) EFFECTIVE JANUARY 1ST, 2025

SJ3213 micro \$22,560

- 13' (3.96 m) Raised platform height (indoor)
- 500 lbs (272 kg) Capacity
- 32" (0.81 m) Overall width
- 60" (1.5 m) Overall length
- 75.8" (1.9 m) Stowed height (rails up)
- 27.5" x 60" (0.7 x 1.5 m) Platform size (outside)

SJ3219 micro \$23,855

- 18' 1" (5.5 m) Raised platform height (indoor)
- 500 lbs (227 kg) Capacity
- 32" (0.81 m) Overall width
- 60" (1.5 m) Overall length
- 79.5" (2.0 m) Stowed height (rails up)
- 27.5" x 60" (0.7 x 1.5 m) Platform size (outside)

Options†

- Dual flashing lights \$645
- AGM Batteries \$1,495
- Lockable swingout trays \$125
- ECOTRAY leak containment system \$850
- Secondary guarding lift enable (SGLE) \$180
- Non destructive testing \$1,595
- White noise alarm \$345
- Perimeter Lights \$945

Accessories‡

- XStep \$2,455

Please see page 75 for available aftermarket accessories.

Standard Features

- Drivable at full height
- Variable speed, dual front wheel electric drive
- Dual holding brakes
- SKYCODED™ Color coded and numbered wiring system
- On-board visual interface with diagnostic capabilities
- Shroud style, impact resistant composite control box with extended cable
- 28 mph (12.5 m/s) Wind rating (12' on SJ3213 micro, 16' on SJ3219 micro)
- Low battery indicator light on control box
- Proportional controls for drive & lift functions
- 20" (0.5 m) Roll out extension deck
- 24V DC Power source
- 110V AC Outlet on platform with GFI
- 2 x 12V Batteries
- Low voltage battery protection
- 25% Gradeability
- Solid rubber, non-marking tires
- Fixed pothole protection system
- Tilt alarm with drive & lift cut-out (3° x 1.5°)
- All motion audible alarm
- Lanyard attachment points
- Steel front wheel motor guards
- Operator horn
- Forklift pockets and tie down / lift lugs
- Overload sensing system
- Solid rails
- Full height spring hinged entry gate
- Telematics ready
- 2-Year Gold Leaf Warranty (5-year structural warranty)

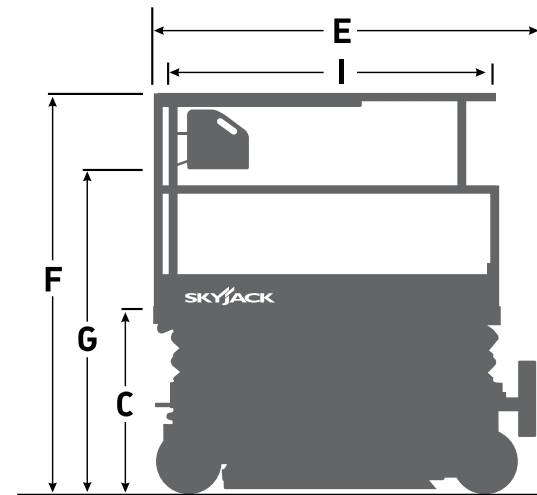
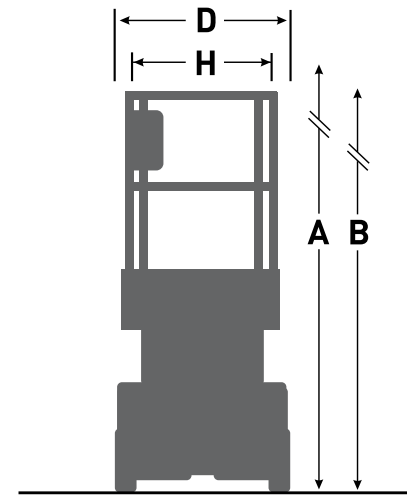


SJ3215/19 E

DC ELECTRIC SCISSOR LIFTS

ANSI A92.20 AND CSA B354.6 COMPLIANT

Dimensions	SJ3215 E	SJ3219 E
A Work Height	20' 7" (6.27 m)	24' 6" (7.48 m)
B Raised Platform Height	14' 7" (4.44 m)	18' 6" (5.64 m)
C Lowered Platform Height	36" (0.91 m)	41" (1.04 m)
D Overall Width	32" (0.81 m)	32" (0.81 m)
E Overall Length	71" (1.80 m)	71" (1.80 m)
F Stowed Height (Rails Up)	79.9" (2.03 m)	84" (2.13 m)
G Stowed Height (Rails Down)	66" (1.67 m)	79.60" (2.01 m)
H Platform Width (Inside Dimension)	25" (0.64 m)	25" (0.65 m)
I Platform Length (Inside Dimension)	61" (1.54 m)	61" (1.54 m)
Specifications	SJ3215 E	SJ3219 E
Extension Deck (Roll Out)	3' (0.91 m)	3' (0.91 m)
Ground Clearance (Pothole Raised)	3.5" (8.9 cm)	3.5" (8.9 cm)
Ground Clearance (Pothole Deployed)	0.5" (1.3 cm)	0.5" (1.3 cm)
Wheelbase	54" (1.37 m)	54" (1.37 m)
Weight	2,570 lbs (1,166 kg)	3,236 lbs (1,468 kg)
Gradeability	25%	25%
Turning Radius (Inside)	0	0
Turning Radius (Outside)	65" (1.65 m)	65" (1.65 m)
Lift Time (With Rated Load)	21 sec	22 sec
Lower Time (With Rated Load)	28 sec	25 sec
Drive Speed (Stowed)	2.1 mph (3.4 km/h)	2.1 mph (3.4 km/h)
Drive Speed (Raised)	0.5 mph (0.8 km/h)	0.6 mph (1.0 km/h)
Maximum Drive Height	Full Height	Full Height
Capacity (Overall)	600 lbs (272 kg)	500 lbs (227 kg)
Distributed Capacity (Main Platform)	350 lbs (159 kg)	250 lbs (113 kg)
Distributed Capacity (Extension Deck)	250 lbs (113 kg)	250 lbs (113 kg)
Local Floor Load (With Rated Load)	160 psi (1,103 kPa)	168 psi (1,159 kPa)
Overall Floor Load (With Rated Load)	206 psf (1,006 kg/m ²)	242 psf (1,182kg/m ²)
Maximum # of persons at 0 mph (0 m/s) wind rating	2	2
Maximum # of Persons up to 28 mph (12.5 m/s) Wind Rating	1	1
Tire Type	Solid, N/M	Solid, N/M
Tire Size	12 x 4 x 8	12 x 4 x 8



DC ELECTRIC SCISSOR LIFTS

LIST PRICING (USD) EFFECTIVE JANUARY 1ST, 2025

SJ3215 E \$22,560

- 14' 7" (4.44 m) Raised platform height
- 600 lbs (272 kg) Capacity
- 32" (0.81 m) Overall width
- 71" (1.80 m) Overall length
- 66" (1.67 m) Stowed height (rails down)
- 25" x 61" (0.64 x 1.54 m) Platform size (inside)

SJ3219 E \$23,855

- 18' 6" (5.64 m) Raised platform height
- 500 lbs (227 kg) Capacity
- 32" (0.81 m) Overall width
- 71" (1.80 m) Overall length
- 79.60" (2.01 m) Stowed height (rails down)
- 25" x 61" (0.64 x 1.54 m) Platform size (inside)

Standard Features

- Drivable at full height
- Variable speed, dual front wheel electric drive
- 90° steering (zero inside turning radius)
- Dual holding brakes
- SKYCODED™ color coded and numbered wiring system
- On-board visual interface with diagnostic capabilities
- Shroud style, impact resistant composite control box with extended cable
- Proportional controls for drive & lift functions
- 3' (0.91 m) Roll out extension deck
- 24V DC power source
- 110V AC Outlet on platform with GFI
- Low voltage battery protection
- 25% Gradeability
- Solid rubber, non-marking tires
- Pothole protection system
- 28 mph (12.5 m/s) wind rating
- Tilt sensor (3.5° x 1.5°)
- Tilt alarm with drive & lift cut-out
- All motion audible alarm
- Lanyard attachment points
- Operator horn
- Forklift pockets and tie down/lift lugs
- Overload sensing system
- RAPIDFOLD hinged railing system (SJ3219 E only)
- Half height spring hinged entry gate
- Telematics ready
- 2 Year Gold Leaf Warranty (5 year structural warranty)

Options†

- Flashing light..... \$345
- Dual flashing lights \$645
- 250 Ah batteries \$440
- AGM Batteries..... \$1,495
- Lockable swingout trays..... \$125
- EE rating package \$1,400

(Cannot be combined with telematics keypad, 250 Ah or AGM batteries, single or dual flashing lights, AC power on platform, perimeter lights, white noise alarm or ECOTRAY)

- Full height spring hinged entry gate..... \$370
- ECOTRAY leak containment system \$850
- Bio oil..... \$275
- Secondary guarding lift enable (SGLE) \$180
- Non destructive testing \$1,595
- White noise alarm \$345
- Perimeter Lights..... \$945

Accessories†

- XStep..... \$2,455

Please see page 75 for available aftermarket accessories.

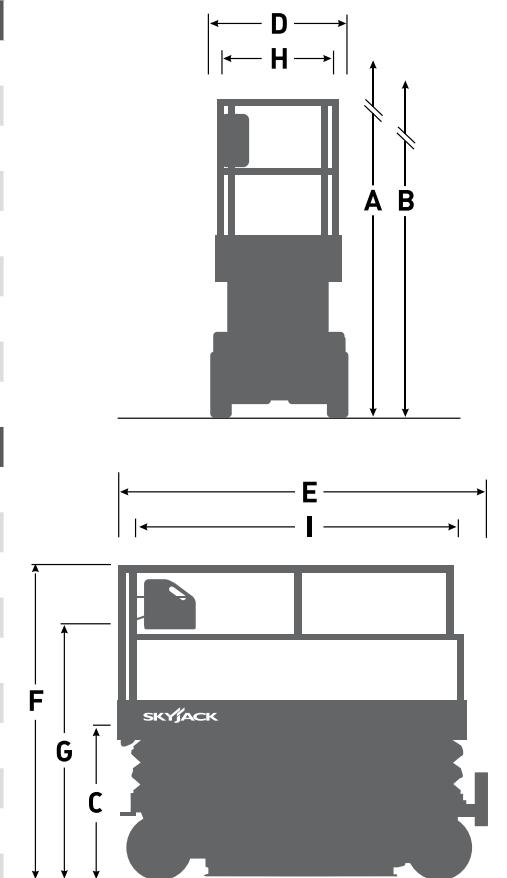


SJ3220/26 E

DC ELECTRIC SCISSOR LIFTS

ANSI A92.20 AND CSA B354.6 COMPLIANT

Dimensions	SJ3220 E	SJ3226 E
A Work Height	25' 6" (7.77 m)	31' 7" (9.63 m)
B Raised Platform Height	19' 6" (5.95 m)	25' 7" (7.79 m)
C Lowered Platform Height	39" (0.99 m)	46" (1.17 m)
D Overall Width	32" (0.81 m)	32" (0.81 m)
E Overall Length	91.6" (2.32 m)	91.6" (2.32 m)
F Stowed Height (Rails Up)	83" (2.10 m)	90" (2.29 m)
G Stowed Height (Rails Down)	69" (1.75 m)	76" (1.93 m)
H Platform Width (Inside Dimension)	28" (0.71 m)	28" (0.71 m)
I Platform Length (Inside Dimension)	83" (2.11 m)	83" (2.11 m)
Specifications	SJ3220 E	SJ3226 E
Extension Deck (Roll Out)	3' (0.91 m)	3' (0.91 m)
Ground Clearance (Pothole Raised)	4.0" (10.2 cm)	4.0" (10.2 cm)
Ground Clearance (Pothole Deployed)	0.5" (1.3 cm)	0.5" (1.3 cm)
Wheelbase	69" (1.75 m)	69" (1.75 m)
Weight	3,917 lbs (1,776 kg)	4,200 lbs (1,905 kg)
Gradeability	25%	25%
Turning Radius (Inside)	43" (1.09 m)	43" (1.09 m)
Turning Radius (Outside)	104" (2.64 m)	104" (2.64 m)
Lift Time (With Rated Load)	34 sec	55 sec
Lower Time (With Rated Load)	24 sec	55 sec
Drive Speed (Stowed)	2.1 mph (3.4 km/h)	2.1 mph (3.4 km/h)
Drive Speed (Raised)	0.6 mph (1.0 km/h)	0.6 mph (1.0 km/h)
Maximum Drive Height	Full Height	Full Height
Capacity (Overall)	900 lbs (408 kg)	500 lbs (227 kg)
Distributed Capacity (Main Platform)	600 lbs (272 kg)	250 lbs (113 kg)
Distributed Capacity (Extension Deck)	300 lbs (136 kg)	250 lbs (113 kg)
Local Floor Load (With Rated Load)	109 psi (749 kPa)	104 psi (718 kPa)
Overall Floor Load (With Rated Load)	248 psf (1209 kg/m ²)	223 psf (1,089 kg/m ²)
Maximum # of persons at 0 mph (0 m/s) wind rating	2	2
Maximum # of Persons up to 28 mph (12.5 m/s) Wind Rating	1	1 (Up to 18' 6" (5.63 m))
Tire Type	Solid, N/M	Solid, N/M
Tire Size	16 x 5 x 12	16 x 5 x 12



DC ELECTRIC SCISSOR LIFTS

LIST PRICING (USD) EFFECTIVE JANUARY 1ST, 2025

SJ3220 E..... \$28,130

- 19' 6" (5.95 m) Raised platform height
- 900 lbs (408 kg) Capacity
- 32" (0.81 m) Overall width
- 91.6" (2.32 m) Overall length
- 69" (1.75 m) Stowed height (rails down)
- 28" x 83" (0.71 x 2.11 m) Platform size (inside)

SJ3226 E..... \$33,125

- 25' 7" (7.79 m) Raised platform height
- 500 lbs (227 kg) Capacity
- 32" (0.81 m) Overall width
- 91.6" (2.32 m) Overall length
- 76" (1.93 m) Stowed height (rails down)
- 28" x 83" (0.71 x 2.11 m) Platform size (inside)

Standard Features

- Drivable at full height
- Variable speed, dual rear wheel electric drive
- Dual holding brakes
- SKYCODED™ color coded and numbered wiring system
- On-board visual interface with diagnostic capabilities
- Shroud style, impact resistant composite control box with extended cable
- Proportional controls for drive & lift functions
- 3' (0.91 m) Roll out extension deck
- 24V DC power source
- 110V AC Outlet on platform with GFI
- Low voltage battery protection
- 25% Gradeability
- Solid rubber, non-marking tires
- Pothole protection system
- 28 mph (12.5 m/s) wind rating (SJ3226 E up to 18' 6" (5.63 m))
- Tilt sensor (3.5° x 1.5°)
- Tilt alarm with drive & lift cut-out
- All motion audible alarm
- Lanyard attachment points
- Operator horn
- Forklift pockets and tie down/lift lugs
- Overload sensing system
- Fold down hinged railing system
- Half height spring hinged entry gate
- Telematics ready
- 2 Year Gold Leaf Warranty (5 year structural warranty)

Options†

Flashing light.....	\$345
Dual flashing lights	\$645
6' (1.83 m) Powered ext. deck (SJ3220)	\$5,950
<small>*adds 387 lbs (176 kg) to unit weight and reduces overall capacity to 800 lbs (363 kg)</small>	
250 Ah batteries	\$440
AGM Batteries	\$1,495
Lockable swingout trays	\$125
EE rating package	\$1,400
<small>(Cannot be combined with telematics keypad, 250 Ah or AGM batteries, power deck, outdoor wind rating option, single or dual flashing lights, AC power on platform, perimeter lights, white noise alarm or ECOTRAY)</small>	
Full height spring hinged entry gate.....	\$370
ECOTRAY leak containment system	\$860
Bio oil	\$660
Secondary guarding lift enable (SGLE)	\$180
Non destructive testing	\$1,595
White noise alarm	\$345
Perimeter Lights.....	\$945

Accessories‡

Please see page 75 for available aftermarket accessories.

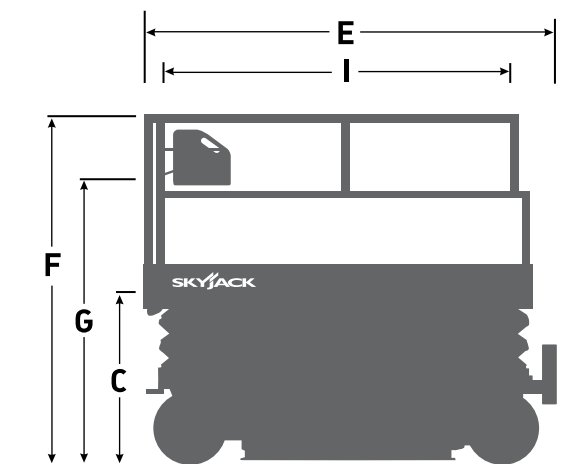
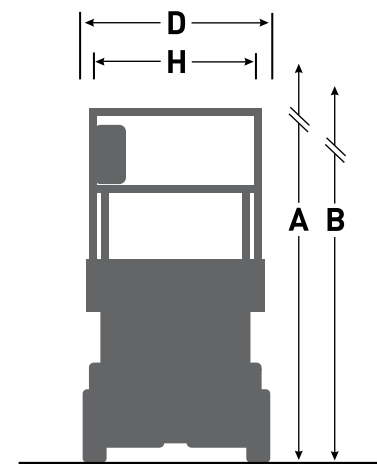


SJ4726/32 E

DC ELECTRIC SCISSOR LIFTS

ANSI A92.20 AND CSA B354.6 COMPLIANT

Dimensions	SJ4726 E	SJ4732 E
A Work Height	31' 8" (9.65 m)	37' 8" (11.48 m)
B Raised Platform Height	25' 8" (7.82 m)	31' 8" (9.65 m)
C Lowered Platform Height	46" (1.17 m)	50" (1.27 m)
D Overall Width	47" (1.20 m)	47" (1.20 m)
E Overall Length	91.6" (2.32 m)	91.6" (2.32 m)
F Stowed Height (Rails Up)	90" (2.29 m)	94" (2.39 m)
G Stowed Height (Rails Down)	75" (1.90 m)	78.5" (1.99 m)
H Platform Width (Inside Dimension)	42" (1.07 m)	42" (1.07 m)
I Platform Length (Inside Dimension)	83" (2.11 m)	83" (2.11 m)
Specifications	SJ4726 E	SJ4732 E
Extension Deck (Roll Out)	4' (1.22 m)	4' (1.22 m)
Ground Clearance (Pothole Raised)	4.0" (10.2 cm)	4.0" (10.2 cm)
Ground Clearance (Pothole Deployed)	0.5" (1.3 cm)	0.5" (1.3 cm)
Wheelbase	69" (1.75 m)	69" (1.75 m)
Weight	4,362 lbs (1,979 kg)	5,478 lbs (2,485 kg)
Gradeability	25%	25%
Turning Radius (Inside)	28" (0.71 m)	28" (0.71 m)
Turning Radius (Outside)	104" (2.64 m)	104" (2.64 m)
Lift Time (With Rated Load)	60 sec	64 sec
Lower Time (With Rated Load)	43 sec	41 sec
Drive Speed (Stowed)	2.1 mph (3.4 km/h)	2.1 mph (3.4 km/h)
Drive Speed (Raised)	0.6 mph (1.0 km/h)	0.6 mph (1.0 km/h)
Maximum Drive Height	Full Height	Full Height
Capacity (Overall)	1,000 lbs (454 kg)	700 lbs (318 kg)
Distributed Capacity (Main Platform)	700 lbs (318 kg)	450 lbs (204 kg)
Distributed Capacity (Extension Deck)	300 lbs (136 kg)	250 lbs (113 kg)
Local Floor Load (With Rated Load)	119 psi (820 kPa)	124 psi (856 kPa)
Overall Floor Load (With Rated Load)	178 psf (869 kg/m ²)	205 psf (1,001 kg/m ²)
Maximum # of Persons at 0 mph (0 m/s) Wind Rating	3	2
Maximum # of persons up to 28 mph (12.5 m/s) wind rating	1	1
Tire Type	Solid, N/M	Solid, N/M
Tire Size	16 x 5 x 12	16 x 5 x 12



DC ELECTRIC SCISSOR LIFTS

LIST PRICING (USD) EFFECTIVE JANUARY 1ST, 2025

SJ4726 E..... \$35,295

- 25' 8" (7.82 m) Raised platform height
- 1,000 lbs (454 kg) Capacity
- 47" (1.19 m) Overall width
- 91.6" (2.32 m) Overall length
- 75" (1.90 m) Stowed height (rails down)
- 42" x 83" (1.07 x 2.11 m) Platform size (inside)

SJ4732 E..... \$42,490

- 31' 8" (9.65 m) Raised platform height
- 700 lbs (318 kg) Capacity
- 47" (1.19 m) Overall width
- 91.6" (2.32 m) Overall length
- 78.5" (1.99 m) Stowed height (rails down)
- 42" x 83" (1.07 x 2.11 m) Platform size (inside)

Standard Features

- Drivable at full height
- Variable speed, dual rear wheel electric drive
- Dual holding brakes
- SKYCODED™ color coded and numbered wiring system
- On-board visual interface with diagnostic capabilities
- Shroud style, impact resistant composite control box with extended cable
- Proportional controls for drive & lift functions
- 4' (1.22 m) Roll out extension deck
- 24V DC power source
- 110V AC Outlet on platform with GFI
- Low voltage battery protection
- 25% gradeability
- Solid rubber, non-marking tires
- Pothole protection system
- 28 mph (12.5 m/s) wind rating
- Tilt sensor (3.5° x 1.5°)
- Tilt alarm with drive & lift cut-out
- All motion audible alarm
- Lanyard attachment points
- Operator horn
- Forklift pockets and tie down/lift lugs
- Overload sensing system
- Fold down hinged railing system
- Half height spring hinged entry gate
- Telematics ready
- 2 Year Gold Leaf Warranty (5 year structural warranty)

Options†

- Flashing light..... \$345
 - Dual flashing lights \$645
 - 250 Ah batteries..... \$440
 - AGM Batteries..... \$1,495
 - Lockable swingout trays..... \$125
 - EE rating package..... \$1,400
- (Cannot be combined with telematics keypad, 250 Ah or AGM batteries, single or dual flashing lights, AC power on platform, perimeter lights, white noise alarm or ECOTRAY)
- Full height spring hinged entry gate..... \$370
 - ECOTRAY leak containment system \$860
 - Bio oil..... \$660
 - Secondary guarding lift enable (SGLE) \$180
 - Non destructive testing \$1,595
 - White noise alarm \$345
 - Perimeter Lights..... \$945

Accessories†

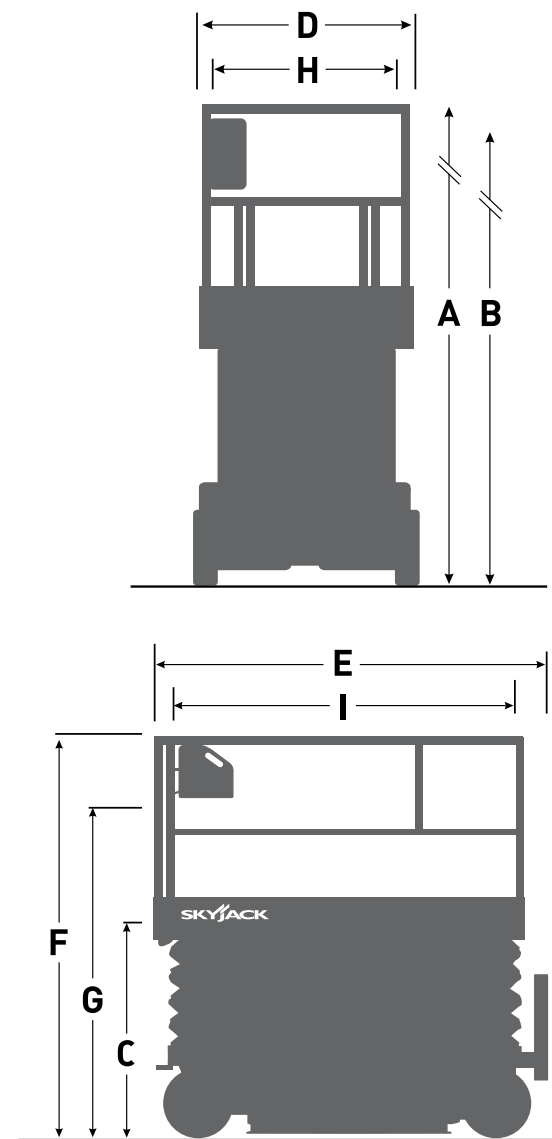
Please see page 75 for available aftermarket accessories.

SJ4740 E

DC ELECTRIC SCISSOR LIFTS

ANSI A92.20 AND CSA B354.6 COMPLIANT

Dimensions	SJ4740 E
A Work Height	44' 11" (13.69 m)
B Raised Platform Height	38' 11" (11.86 m)
C Lowered Platform Height	56" (1.41 m)
D Overall Width	47" (1.20 m)
E Overall Length (Platform Retracted)	95.2" (2.41 m)
F Stowed Height (Rails Up)	99.5" (2.53 m)
G Stowed Height (Rails Down)	79.8" (2.03 m)
H Platform Width (Inside Railing)	42" (1.06 m)
I Platform Inside Length (Retracted)	86" (2.19 m)
Specifications	SJ4740 E
Extension Deck (Roll Out)	3' (0.91 m)
Ground Clearance (Pothole Raised)	4.5" (11.4 cm)
Ground Clearance (Pothole Deployed)	0.5" (1.3 cm)
Wheelbase	73" (1.85 m)
Weight	6,470 lbs (2,935 kg)
Gradeability	25%
Turning Radius (Inside)	31" (0.79 m)
Turning Radius (Outside)	110" (2.78 m)
Lift Time (With Rated Load)	88 sec
Lowered Time (With Rated Load)	53 sec
Drive Speed (Stowed)	2.0 mph (3.2 km/h)
Drive Speed (Raised)	0.5 mph (0.8 km/h)
Maximum Drive Height	Full Height
Capacity (Overall)	770 lbs (349 kg)
Distributed Capacity (Main Platform)	505 lbs (229 kg)
Distributed Capacity (Extension Deck)	265 lbs (120 kg)
Local Floor Load (With Rated Load)	139 psi (956 kPa)
Overall Floor Load (With Rated Load)	233 psf (1,137 kg/m ²)
Maximum # of Persons at 0 mph (0 m/s) Wind Rating	3
Maximum # of persons up to 28 mph (12.5 m/s) wind rating	1 (Up to 24' (7.3 m))
Tire Type	Solid, N/M
Tire Size	16 x 5 x 12



DC ELECTRIC SCISSOR LIFTS

LIST PRICING (USD) EFFECTIVE JANUARY 1ST, 2025

SJ4740 E..... \$57,055

- 38' 11" (11.86 m) Raised platform height
- 770 lbs (349 kg) Capacity
- 47" (1.19 m) Overall width
- 95.2" (2.41 m) Overall length
- 79.8" (2.03 m) Stowed height (rails down)
- 42" x 86" (1.06 x 2.19 m) Platform size (inside)

Standard Features

- Drivable at full height
- Variable speed, dual rear wheel electric drive
- Dual holding brakes
- SKYCODED™ color coded and numbered wiring system
- On-board visual interface with diagnostic capabilities
- Shroud style, impact resistant composite control box with extended cable
- Proportional controls for drive & lift functions
- 3' (0.91 m) Roll out extension deck
- 24V DC power source
- 110V AC Outlet on platform with GFI
- Low voltage battery protection
- 25% Gradeability
- Solid rubber, non-marking tires
- Pothole protection system
- 28 mph (12.5 m/s) wind rating (Up to 24' (7.3 m))
- Tilt sensor (3.5° x 1.5°)
- Tilt alarm with drive & lift cut-out
- All motion audible alarm
- Lanyard attachment points
- Operator horn
- Forklift pockets and tie down/lift lugs
- Overload sensing system
- Fold down hinged railing system
- Half height spring hinged entry gate
- Telematics ready
- 2 Year Gold Leaf Warranty (5 year structural warranty)

Options†

Flashing light.....	\$345
Dual flashing lights	\$645
AGM Batteries.....	\$2,250
Lockable swingout trays.....	\$125
Full height spring hinged entry gate.....	\$370
ECOTRAY leak containment system	\$860
Bio oil.....	\$730
Secondary guarding lift enable (SGLE)	\$180
Non destructive testing	\$1,595
White noise alarm	\$345
Perimeter Lights.....	\$945

Accessories†

Please see page 75 for available aftermarket accessories.



ROUGH TERRAIN SCISSOR LIFTS

SPECIFICATIONS, FEATURES, AND PRICING



SJ6826/32 RT



SJ9233/43 RT



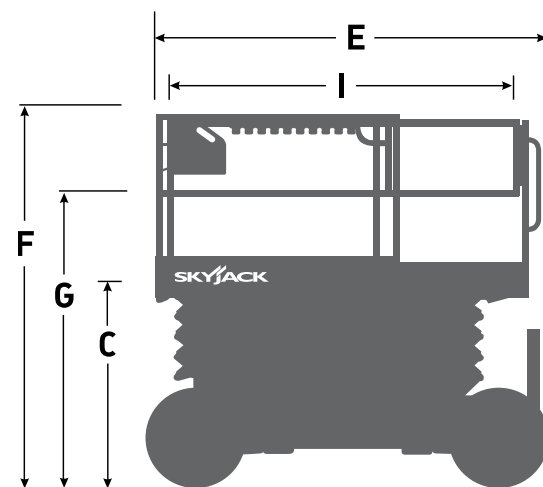
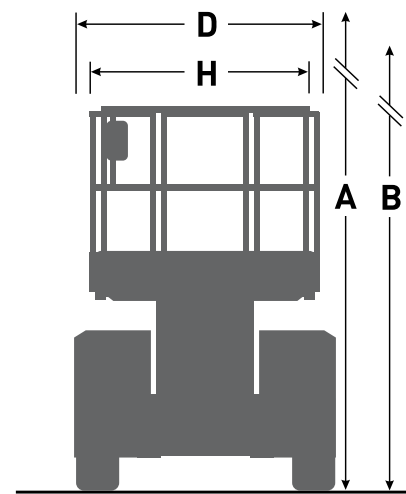
SJ9253/9664 RT

SJ6826/32 RT

ROUGH TERRAIN SCISSOR LIFTS

ANSI A92.20 AND CSA B354.6 COMPLIANT

Dimensions	SJ6826 RT	SJ6832 RT
A Work Height	32' (9.75 m)	38' (11.58 m)
B Raised Platform Height	26' (7.92 m)	32' (9.75 m)
C Lowered Platform Height	48.5" (1.23 m)	54" (1.37 m)
D Overall Width	69.5" (1.76 m)	69.5" (1.76 m)
E Overall Length	107" (2.72 m)	107" (2.72 m)
F Stowed Height (Rails Up)	93.5" (2.38 m)	99" (2.51 m)
G Stowed Height (Rails Down)	63.5" (1.61 m)	69" (1.75 m)
H Platform Width (Inside Dimension)	56" (1.42 m)	56" (1.42 m)
I Platform Length (Inside Dimension)	96" (2.44 m)	96" (2.44 m)
Specifications	SJ6826 RT	SJ6832 RT
Extension Deck	5' (1.52 m)	5' (1.52 m)
Ground Clearance	8" (0.20 m)	8" (0.20 m)
Wheelbase	80.5" (2.04 m)	80.5" (2.04 m)
Weight	6,460 lbs (2,930 kg)	7,590 lbs (3,443 kg)
Gradeability	45%	40%
Turning Radius (Inside)	60" (1.52 m)	60" (1.52 m)
Turning Radius (Outside)	156" (3.96 m)	156" (3.96 m)
Lift Time (With Rated Load)	36 sec	39 sec
Lower Time (With Rated Load)	36 sec	36 sec
Drive Speed (Stowed)	3.8 mph (6.1 km/h)	3.8 mph (6.1 km/h)
Drive Speed (Raised)	0.4 mph (0.6 km/h)	0.4 mph (0.6 km/h)
Maximum Drive Height	Full Height	Full Height
Capacity (Overall)	1,250 lbs (567 kg)	1,000 lbs (454 kg)
Distributed Capacity (Main Platform)	950 lbs (431 kg)	700 lbs (318 kg)
Distributed Capacity (Extension Deck)	300 lbs (136 kg)	300 lbs (136 kg)
Local Floor Load (With Rated Load)	190 psi (1,310 kPa)	216 psi (1,500 kPa)
Overall Floor Load (With Rated Load)	170 psf (830 kg/m ²)	200 psf (976 kg/m ²)
Maximum # of Persons up to 28 mph (12.5 m/s) Wind Rating	4	4
Diesel Engine	24.8 HP Kubota	24.8 HP Kubota
Fuel Tank	23 gal (87 L)	23 gal (87 L)
Hydraulic Reservoir	23 gal (87 L)	23 gal (87 L)
Outrigger Leveling (Front to Back / Side to Side)	5° / 8°	5° / 8°
Tire Type	Foam-Filled	Foam-Filled
Tire Size	26 x 12	26 x 12



ROUGH TERRAIN SCISSOR LIFTS

LIST PRICING (USD) EFFECTIVE JANUARY 1ST, 2025

SJ6826 RT..... \$65,410

- 26' (7.92 m) Raised platform height
- 1,250 lbs (567 kg) Capacity
- 69.5" (1.76 m) Overall width
- 107" (2.72 m) Overall length
- 63.5" (1.61 m) Stowed height (rails down)
- 56" x 96" (1.42 x 2.44 m) Platform size (inside)

SJ6832 RT..... \$72,815

- 32' (9.75 m) Raised platform height
- 1,000 lbs (454 kg) Capacity
- 69.5" (1.76 m) Overall width
- 107" (2.72 m) Overall length
- 69" (1.75 m) Stowed height (rails down)
- 56" x 96" (1.42 x 2.44 m) Platform size (inside)

Options†

- Independent/auto leveling outriggers \$12,620
- Flashing light..... \$340
- 3.5 kW generator \$5,925
- Cold weather start package \$1,545
(Includes hydraulic oil tank heater, battery blanket, coolant or block heater)
- Positive air shut-off valve..... \$4,485
- Bio oil..... \$1,830
- Secondary guarding lift enable (SGLE) \$365
- Non destructive testing \$1,595
- White noise alarm \$345
- Foam-filled Non-marking tires..... \$1,795

Accessories‡

Please see page 75 for available aftermarket accessories.

Standard Features

- Crossover symmetrical 4WD
- Drivable at full height with roll out deck fully extended
- Shroud style, impact resistant composite control box
- 5' (1.52 m) Roll out extension deck
- Dual fuel (gas/propane) or diesel engine
- 90° swing out engine tray
- Multiple wet disc spring applied hydraulic release brakes
- 110V AC outlet on platform with GFI
- Up to 45% Gradeability
- Foam-filled low profile grip lug tires
- Tilt sensor (4.5° x 2.5°)
- Tilt alarm with drive & lift cut-out
- Lanyard attachment points
- All motion audible alarm
- Operator horn
- Hinged railing system
- Forklift pockets and tie down/lift lugs
- Overload sensing system
- Fold down hinged railing system
- Full height spring hinged entry gate at rear of unit
- SKYCODED™ color coded and numbered wiring
- Telematics ready
- 2 Year Gold Leaf Warranty (5 year structural warranty)

SJ9233/43 RT

ROUGH TERRAIN SCISSOR LIFTS

ANSI A92.20 AND CSA B354.6 COMPLIANT

Dimensions	SJ9233 RT	SJ9243 RT
A Work Height	39' (11.89 m)	49' (14.94 m)
B Raised Platform Height	33' (10.06 m)	43' (13.11 m)
C Lowered Platform Height	67" (1.70 m)	75.5" (1.92 m)
D Overall Width	90.6" (2.30 m)	90.6" (2.30 m)
E Overall Length	177" (4.50 m)	177" (4.50 m)
F Stowed Height (Rails Up)	109" (2.77 m)	116.5" (2.96 m)
G Stowed Height (Rails Down)	77" (1.96 m)	85" (2.16 m)
H Platform Width (Inside Dimension)	71.65" (1.82 m)	71.65" (1.82 m)
I Platform Length (Inside Dimension)	171.7" (4.36 m)	171.7" (4.36 m)
Specifications	SJ9233 RT	SJ9243 RT
Extension Deck	5' (1.52 m)	5' (1.52 m)
Ground Clearance	10" (26 cm)	10" (26 cm)
Wheelbase	119" (3.02 m)	119" (3.02 m)
Weight	13,479 lbs (6,114 kg)	14,879 lbs (6,749 kg)
Gradeability	40%	40%
Turning Radius (Inside)	131" (3.33 m)	131" (3.33 m)
Lift Time (With Rated Load)	35 sec	45 sec
Lower Time (With Rated Load)	30 sec	40 sec
Drive Speed (Stowed)	2.5 mph (4 km/h)	2.5 mph (4 km/h)
Drive Speed (Raised)	0.6 mph (1 km/h)	0.6 mph (1 km/h)
Maximum Drive Height	Full Height	Full Height
Capacity (Overall)	2,750 lbs (1,247 kg)	2,000 lbs (907 kg)
Main Platform (With 1 Extension Deck)	2,250 lbs (1,021 kg)	1,500 lbs (680 kg)
Extension Deck	500 lbs (227 kg)	500 lbs (227 kg)
Maximum Wind Rating	28 mph (12.5 m/s)	28 mph (12.5 m/s)
Personnel Rating at Max Wind Rating	7	6
Tire Type	Solid	Solid
Tire Size	33 x 12-20	33 x 12-20
Diesel Engine	Kubota 24.8 HP D1305	Kubota 24.8 HP D1305
Fuel Tank Capacity	13 gal. (49 L)	13 gal. (49 L)
Hydraulic Reservoir	23 gal. (87 L)	23 gal. (87 L)

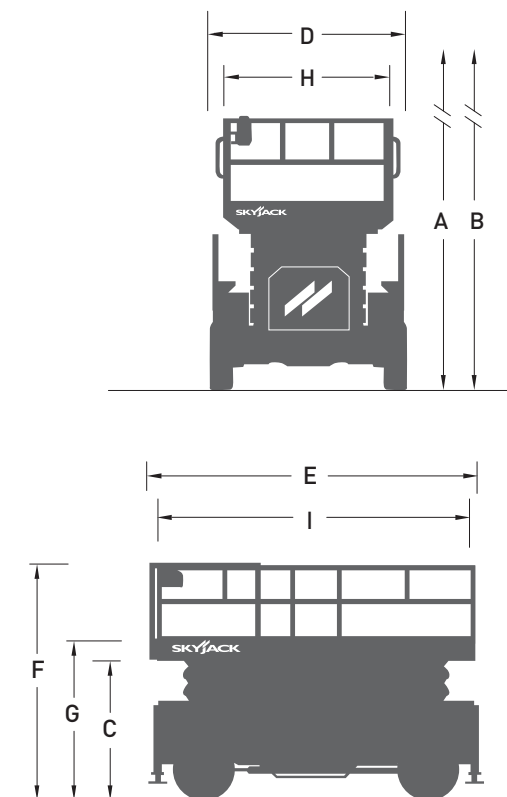
* with standard tires

SKYCODED.

AXLDRIVE.

SMARTORQUE.

ACCESSORYZERS.



ROUGH TERRAIN SCISSOR LIFTS

LIST PRICING (USD) EFFECTIVE JANUARY 1ST, 2025

SJ9233 RT..... \$114,495

- 33' (10.06 m) Raised platform height
- 2,750 lbs (1,247 kg) Capacity
- 90.6" (2.30 m) Overall width
- 174" (4.42 m) Overall length
- 75" x 170" (1.90 x 4.31 m) Platform size (inside)
- 5' (1.52 m) Roll out extension deck

SJ9243 RT..... \$118,115

- 43' (13.11 m) Raised platform height
- 2,000 lbs (907 kg) Capacity
- 90.6" (2.30 m) Overall width
- 174" (4.42 m) Overall length
- 75" x 170" (1.90 x 4.31 m) Platform size (inside)
- 5' (1.52 m) Roll out extension deck

Standard Features

- AXLDRIVE™ Axle-based 4WD system
- Operator controlled locking rear differential and limited slip front differential
- Drivable at full height
- 40% gradeability
- Wet disc SAHR brakes (rear axle)
- SKYCODED™ Color coded and numbered wiring system
- On-board visual interface with diagnostic capabilities
- Kubota D1305 Tier 4F diesel engine
- Self-centering scissor design to support optional dual extension decks
- Lockable power disconnect switch
- Flashing light
- Proportional controls
- Up to 2,750 lbs (1,247 kg) capacity
- Oversized platform with optimal clearance over side of machine
- Fold down hinged railing system
- Full height entry gates
- 5' (1.52 m) roll-out extension deck
- High strength and impact resistant composite control box
- Overload sensing system
- 110V AC Outlet on platform with GFI
- Tilt alarm (4.5° x 2.5°) with drive and lift cut-out
- Single point emergency lowering
- Hourmeter
- Operator horn
- All motion alarm
- Tie down/lifting lugs
- Grip lug solid tires
- Telematics ready
- 2 Year Gold Leaf Warranty (5 year structural warranty)

Options†

- Kubota WG972 dual fuel engine..... **\$2,950**
- Dual 5' (1.52 m) roll out extension decks **\$4,935**
- Auto leveling outriggers **\$13,895**
- 3.5 kW belt driven generator **\$6,850**
- Welder ready package..... **\$14,365**
(Includes 7.5 kW hydraulic generator, hydraulic oil cooler, 3-phase power connection in platform)
- Positive air shut-off valve..... **\$4,485**
- Cold weather start package **\$2,075**
*Recommended for regions where average monthly low temperatures can reach 14°F / -10°C (Includes hydraulic oil tank heater, battery blanket, coolant or block heater)
- Arctic weather package..... **\$3,675**
*Recommended for regions where average monthly low temperatures can reach -0.4°F / -18°C (Includes cold weather start kit plus 60/40 coolant, arctic engine and gear oil)
- Bio oil..... **\$2,105**
- Secondary guarding lift enable (SGLE) **\$365**
- Non destructive testing **\$1,595**
- White noise alarm **\$345**
- Solid non-marking tires **\$1,295**

Accessories‡

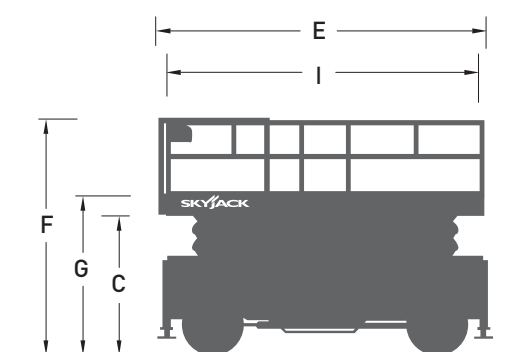
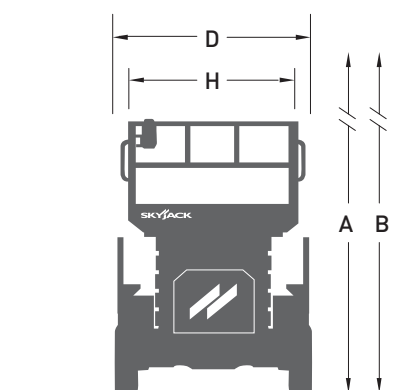
Please see page 75 for available aftermarket accessories.

SJ9253/9664 RT

ROUGH TERRAIN SCISSOR LIFTS

ANSI A92.20 AND CSA B354.6 COMPLIANT

Dimensions	SJ9253 RT	SJ9664 RT
A Work Height	59' (17.98 m)	70' (21.34 m)
B Raised Platform Height	53' (16.15 m)	64' (19.51 m)
C Lowered Platform Height	83.5" (2.12 m)	96.5" (2.45 m)
D Overall Width	90.6" (2.30 m)	95.3" (2.42 m)
E Overall Length	177" (4.50 m)	180.5" (4.58 m)
F Stowed Height (Rails Up)	126" (3.20 m)	141.7" (3.60 m)
G Stowed Height (Rails Down)	94" (2.39 m)	109.5" (2.78 m)
H Platform Width (Inside Dimension)	71.65" (1.82 m)	76" (1.92 m)
I Platform Length (Inside Dimension)	171.7" (4.36 m)	172.5" (4.38 m)
Specifications	SJ9253 RT	SJ9664 RT
Extension Deck	5' (1.52 m)	4.75' (1.45 m)
Ground Clearance	10" (26 cm)	10" (26 cm)
Wheelbase	119" (3.02 m)	119" (3.02 m)
Weight	17,736 lbs (8,045 kg)	21,495 lbs (9,750 kg)
Gradeability	32%	32%
Turning Radius (Inside)	131" (3.33 m)	173" (4.40 m)
Lift Time (With Rated Load)	69 sec	87 sec
Lower Time (With Rated Load)	50 sec	72 sec
Drive Speed (Stowed)	2.5 mph (4 km/h)	2.0 mph (3.2 km/h)
Drive Speed (Raised)	0.6 mph (1 km/h)	0.5 mph (0.80 km/h)
Maximum Drive Height	33' (10.06 m)	30' (9.14 m)
Capacity (Overall)	1,500 lbs (680 kg)	1,130 lbs (513 kg)
Main Platform (With 1 Extension Deck)	1,000 lbs (454 kg)	630 lbs (286 kg)
Extension Deck	500 lbs (227 kg)	500 lbs (227 kg)
Maximum Wind Rating	28 mph (12.5 m/s)	28 mph (12.5 m/s)
Personnel Rating at Max Wind Rating	5	3
Tire Type	Solid	Solid
Tire Size	33 x 12-20	33 x 12-20
Diesel Engine	Kubota 24.8 HP D1305	Kubota 24.8 HP D1305
Fuel Tank Capacity	13 gal. (49 L)	13 gal. (49 L)
Hydraulic Reservoir	23 gal. (87 L)	31 gal. (116 L)



ROUGH TERRAIN SCISSOR LIFTS

LIST PRICING (USD) EFFECTIVE JANUARY 1ST, 2025

SJ9253 RT..... \$147,625

- 53' (16.15 m) Raised platform height
- 1,500 lbs (680 kg) Capacity
- 90.6" (2.30 m) Overall width
- 174" (4.42 m) Overall length
- 75" x 170" (1.90 x 4.31 m) Platform size (inside)
- 5' (1.52 m) Roll out extension deck

SJ9664 RT..... \$183,935

- 64' (19.51 m) Raised platform height
- 1,130 lbs (513 kg) Capacity
- 96" (2.44 m) Overall width
- 180" (4.57 m) Overall length
- 75" x 170" (1.90 x 4.31 m) Platform size (inside)
- 5' (1.52 m) Roll out extension deck

Standard Features

- AXLDRIIVE™ Axle-based 4WD system
- Operator controlled locking rear differential and limited slip front differential
- Drivable at 33' (10.06 m)
- 32% Gradeability
- Wet disc SAHR brakes (rear axle)
- SKYCODED™ Color coded and numbered wiring system
- On-board visual interface with diagnostic capabilities
- Kubota D1305 Tier 4F diesel engine
- Auto leveling outriggers
- Self-centering scissor design to support optional dual extension decks
- Lockable power disconnect switch
- Flashing light
- Proportional controls
- Up to 1,500 lbs (680 kg) capacity
- Oversized platform with optimal clearance over side of machine
- Fold down hinged railing system
- Full height entry gates
- 5' (1.52 m) roll-out extension deck
- High strength and impact resistant composite control box
- Overload sensing system
- 110V AC Outlet on platform with GFI
- Tilt alarm (4.5° x 2.5°) with drive and lift cut-out
- Single point emergency lowering
- Hourmeter
- Operator horn
- All motion alarm
- Tie down/lifting lugs
- Grip lug solid tires
- Telematics ready
- 2 Year Gold Leaf Warranty (5 year structural warranty)

Options†

- Kubota WG972 dual fuel engine (SJ9253 RT)..... **\$2,950**
- Dual 5' (1.52 m) roll out extension decks **\$4,935**
- 3.5 kW generator **\$6,850**
- Welder ready package..... **\$14,365**
(Includes 7.5 kW generator, hydraulic oil cooler, 3-phase power connection in platform)
- Positive air shut-off valve..... **\$4,485**
- Cold weather start package **\$2,075**
*Recommended for regions where average monthly low temperatures can reach 14°F / -10°C
(Includes hydraulic oil tank heater, battery blanket, coolant or block heater)
- Arctic weather package..... **\$3,675**
*Recommended for regions where average monthly low temperatures can reach -0.4°F / -18°C
(Includes cold weather start kit plus 60/40 coolant, arctic engine and gear oil)
- Bio oil..... **\$2,105**
- Secondary guarding lift enable (SGLE) **\$365**
- Non destructive testing **\$1,595**
- White noise alarm **\$345**
- Grip lug solid non-marking tires..... **\$1,295**

Accessories‡

Please see page 75 for available aftermarket accessories.





ARTICULATING BOOM LIFTS

SPECIFICATIONS, FEATURES, AND PRICING



SJ30 ARJE



SJ45 AJ+



SJ60 AJ+



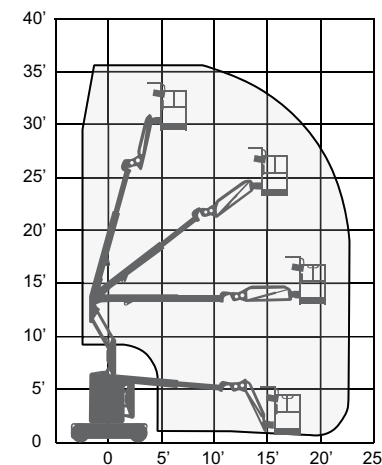
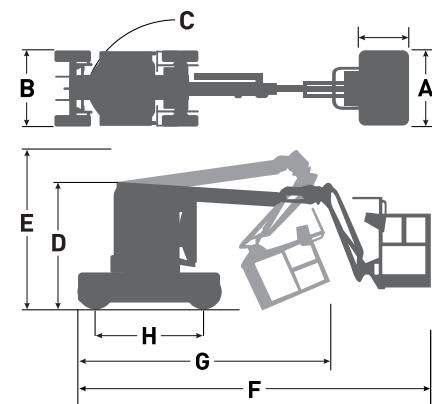
SJ85 AJ

SJ30 ARJE

ELECTRIC ARTICULATING BOOM LIFTS

ANSI A92.20 AND CSA B354.6 COMPLIANT

Dimensions	SJ30 ARJE
Work Height	35' 6" (10.82 m)
Platform Height	29' 6" (9.00 m)
Horizontal Reach	20' 7" (6.26 m)
Up and Over Height	13' 1" (3.99 m)
A Platform Size	30" x 46" (0.76 m x 1.17 m)
B Stowed Width	3' 11" (1.19 m)
C Tailswing	0
D Stowed Height	6' 6" (1.98 m)
E Transport Height	8' 2" (2.50 m)
F Stowed Length	18' 1" (5.51 m)
G Transport Length	12' 5" (3.79 m)
H Wheelbase	5' 5" (1.65 m)
Ground Clearance	4" (10.16 cm)
Specifications	SJ30 ARJE
Turret Rotation	355° NC
Platform Rotation	180°
Jib Length	4' 1" (1.25 m)
Jib Range of Motion - Vertical	142° (+77°/-65°)
Jib Range of Motion - Horizontal	180°
Weight	12,320 lbs (5,588 kg)
Gradeability - Counterweight Facing Up	35%
Gradeability - Counterweight Facing Down	25%
Turning Radius (Inside)	5' (1.52 m)
Turning Radius (Outside)	10' 7" (3.23 m)
Drive Speed (Stowed)	3.0 mph (4.8 km/h)
Drive Speed (Elevated/Extended)	0.4 mph (0.64 km/h)
Capacity	500 lbs (227 kg)
Local Floor Load (With Rated Load)	218 psi (15.33 kg/sq cm)
Overall Floor Load (With Rated Load)	451 psf (2,203 kg/sq m)
Maximum # of Persons (Indoors/Outdoors)	2/1
Wind Rating	28 mph (12.5 m/s)
Tire Type	Solid, N/M
Tire Size	22 x 7 x 12



SJ30 ARJE WORKING ENVELOPE

ELECTRIC ARTICULATING BOOM LIFTS

LIST PRICING (USD) EFFECTIVE JANUARY 1ST, 2025

SJ30 ARJE..... \$103,850

- 29' 6" (9.00 m) Platform height
- 4' 1" (1.25 m) Jib
- 180° Horizontal Jib Rotation
- 500 lbs (227 kg) Capacity
- 20' 7" (6.26 m) Horizontal reach
- 13' 1" (3.99 m) Up and over height
- 355° Non-continuous turret rotation
- 30" x 46" (0.76 x 1.17 m) Platform size

Options†

360 Ah batteries.....	\$835
Rear spring hinged entry gate	\$435
Bio oil.....	\$470
Flashing light	\$330
White noise alarm	\$345

Accessories‡

Please see page 75 for available aftermarket accessories.

Standard Features

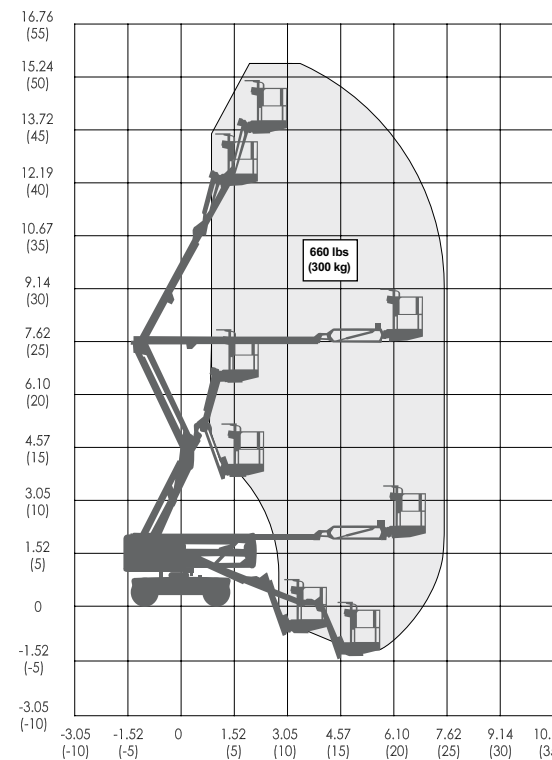
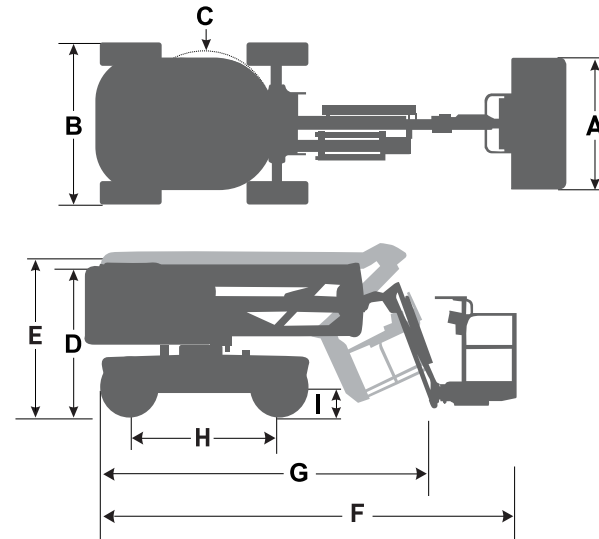
- EASYDRIVE™ Direction sensing drive and steer controls
- SKYRISER™ True vertical rise
- Direct AC electric drive
- Dual spring applied, electromagnetically released brakes
- Speed and angle sensing traction control
- Drivable at full height
- 35% Gradeability
- Relay based control system with SKYCODED™ color coded and numbered wiring
- 48V 305 Ah Battery pack
- Swing out battery trays
- Swing out cowlings for easy access
- Proportional controls
- Function speed selector
- Rotating jib
- Bolt-in platform railing system
- Lanyard attachment points
- Rear-entry sliding mid rail
- Secondary Guarding Electrical (SGE)
- Overload sensing system
- 110V AC Outlet on platform with GFI
- Tilt alarm (3.0° x 2.0°) with drive and lift cut-out
- Powered emergency lowering
- Hourmeter
- Operator horn
- All motion alarm
- 355° Non-continuous turret rotation
- Tie down/lifting lugs
- Solid rubber, non-marking tires
- Telematics ready
- 2 Year Gold Leaf Warranty (5 year structural warranty)

SJ45 AJ+

ARTICULATING BOOM LIFTS

ANSI A92.20 AND CSA B354.6 COMPLIANT

Dimensions	SJ45 AJ+
Work Height	51' (15.54 m)
Platform Height	45' (13.72 m)
Horizontal Reach	22' 9" (6.93 m)
Up and Over Height	24' 5.25" (7.45 m)
A Platform Size	30" x 72" (0.76 x 1.83 m)
B Stowed Width	7' 6" (2.29 m)
C Tailswing	2' (0.61 m)
D Stowed Height	6' 9" (2.06 m)
E Transportation Height	7' 1" (2.16 m)
F Stowed Length	19' 8" (6.00 m)
G Transportation Length	15' 7" (4.75 m)
H Wheelbase	6' 8" (2.03 m)
I Ground Clearance	15.25" (0.39 m)
Specifications	SJ45 AJ+
Rotation	355° NC
Platform Rotation	170°
Jib Length	4' 8" (1.40 m)
Jib Range +/-	+70° / -75°
Weight	11,190 lbs (5,075 kg)
Gradeability	40%
Turning Radius (Inside)	4' 11.25" (1.50 m)
Turning Radius (Outside)	14' 3" (4.34 m)
Axle Oscillation	5" (12.70 cm)
Drive Speed (High speed)	2.5 mph (4.0 km/h)
Capacity	660 lbs (300 kg)
Maximum Wind Rating	28 mph (12.5 m/s)
Personnel Rating at Max Wind Rating	2
Tire Type	Solid
Tire Size	10 x 31
Diesel Engine	Kubota D1305 - 24.8 HP (18.5 KW)
Fuel Tank Capacity	17 gal. (64 L)
Hydraulic Reservoir	24 gal. (91 L)



SJ45AJ+ WORKING ENVELOPE

ARTICULATING BOOM LIFTS

LIST PRICING (USD) EFFECTIVE JANUARY 1ST, 2025

SJ45 AJ+..... \$136,025

- 45' (13.72 m) Platform height
- 4'8" (1.4 m) Jib
- 660 lbs (300 kg) Capacity
- 22' 9" (6.93 m) Horizontal reach
- 24' 5.25" (7.45 m) Up and over height
- 355° Non-continuous turret rotation
- 30" x 72" (0.76 x 1.83 m) Platform size

Standard Features

- EASYDRIVE™ Direction sensing drive and steer controls
- SKYRISER™ True vertical rise
- AXLDRIIVE™ Axle-based 4WD system
- Operator controlled locking rear differential and limited slip front differential
- Oscillating steer axle
- Drivable at full height
- 40% Gradeability
- Wet disc SAHR brakes (rear axle)
- Dual module control system with SKYCODED™ color coded and numbered wiring
- Kubota D1305 Tier 4F diesel engine
- Swing up cowlings for easy access
- Lockable power disconnect switch
- Proportional controls
- Bolt-in platform railing system
- Lanyard attachment points
- Dual-entry sliding mid rails
- Secondary Guarding Electrical (SGE)
- Overload sensing system
- 110V AC Outlet on platform with GFI
- Tilt alarm (5.0° x 5.0°) with drive and lift cut-out
- Single point emergency lowering
- Hourmeter
- Operator horn
- All motion alarm
- 355° Non-continuous turret rotation
- Tie down/lifting lugs
- Grip lug solid tires
- Telematics ready
- 2 Year Gold Leaf Warranty (5 year structural warranty)

Options†

- Kubota WG972 dual fuel engine..... **\$2,950**
- Flashing light..... **\$870**
- Side spring hinged entry gate..... **\$435**
- 3.5 kW generator..... **\$6,850**
- Welder ready package..... **\$14,365**
(Includes 7.5 kW generator, 3-phase power connection in platform, and welder mount)
- Cold weather start kit*..... **\$3,200**
(*Recommended for regions where average monthly low temperatures can reach 14°F / -10°C (Includes cold start engine oil, battery blanket, and hydraulic tank heater)
- Arctic weather package*..... **\$4,805**
(*Recommended for regions where average monthly low temperatures can reach -0.4°F / -18°C

(Includes arctic engine oil, battery blanket, hydraulic tank heater, block heater, arctic hydraulic oil, and arctic gear oil in the axles and swing drive. Glow plugs, arctic hydraulic hoses (all), arctic platform rotator and oversized foot switch cover are also included (standard equipment).)

- Positive air shut-off valve (diesel only)..... **\$4,485**
- Bio oil..... **\$3,200**
- White noise alarm..... **\$345**
- Grip lug solid non-marking tires..... **\$1,295**
- Turf foam-filled tires..... **\$10,215**

Accessories†

Please see page 75 for available aftermarket accessories.

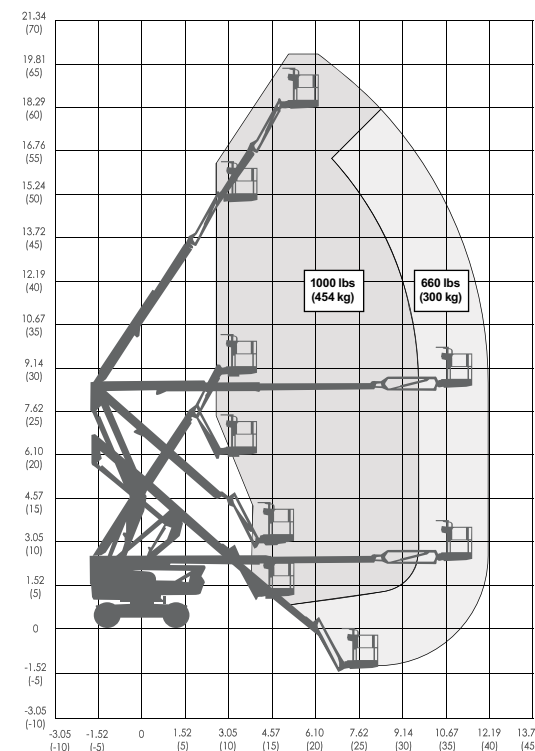
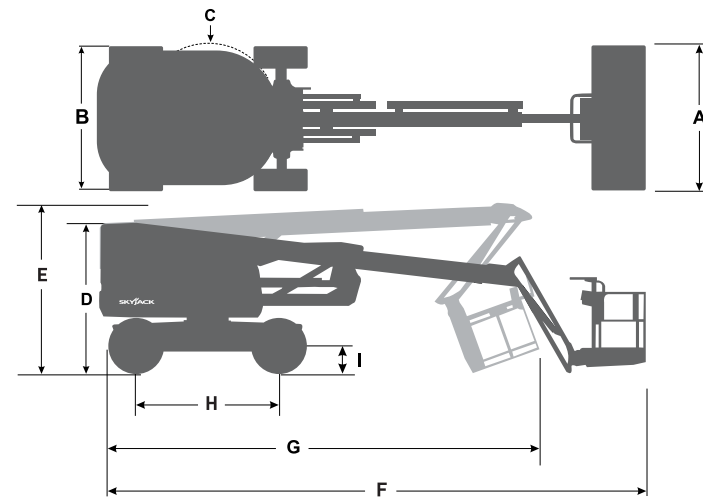


SJ60 AJ+

ARTICULATING BOOM LIFTS

ANSI A92.20 AND CSA B354.6 COMPLIANT

Dimensions	SJ60 AJ+
Work Height	66' (20.11 m)
Platform Height	60' (18.29 m)
Horizontal Reach	37' 11" (11.56 m)
Up and Over Height	27' 2" (8.31 m)
A Platform Size	36" x 96" (0.91 x 2.44 m)
B Stowed Width	8' (2.44 m)
C Tailswing	2' (0.61 m)
D Stowed Height	8' 4" (2.54 m)
E Transportation Height	9' 2" (2.79 m)
F Stowed Length	28' 2" (8.59 m)
G Transportation Length	21' 8" (6.60 m)
H Wheelbase	8' (2.44 m)
I Ground Clearance	13" (0.33 m)
Specifications	SJ60 AJ+
Rotation	360° Continuous
Platform Rotation	170°
Jib Length	5' (1.52 m)
Jib Range +/-	+65° / -60°
Weight	18,865 lbs (8,557 kg)
Gradeability	40%
Turning Radius (Inside)	7' 3" (2.21 m)
Turning Radius (Outside)	17' 5" (5.31 m)
Axle Oscillation	4" (10.16 m)
Drive Speed (High speed)	2.5 mph (4.0 km/h)
Capacity	660 / 1,000 lbs (300 / 454 kg)
Maximum Wind Speed	28 mph (12.5 m/s)
Personnel Rating at Max Wind Rating	2 / 3
Tire Type	Foam-Filled
Tire Size	14 x 610
Diesel Engine	Kubota D1305 - 24.8 HP (18.5 KW)
Fuel Tank Capacity	30.4 gal. (115L)
Hydraulic Reservoir	30.4 gal. (115L)



SJ60 AJ+ WORKING ENVELOPE

ARTICULATING BOOM LIFTS

LIST PRICING (USD) EFFECTIVE JANUARY 1ST, 2025

SJ60 AJ+..... \$198,650

- 60' (18.29 m) Platform height
- 5' (1.52 m) Jib
- 660 / 1,000 lbs (300 / 454 kg) Dual capacity
- 37' 11" (11.56 m) Horizontal reach
- 27' 2" (8.31 m) Up and over height
- 360° Continuous Turret Rotation
- 36" x 96" (0.91 x 2.44 m) Platform size

Standard Features

- EASYDRIVE™ Direction sensing drive and steer controls
- SPEEDYREACH™ Negative boom angle capability
- SKYRISER™ True vertical rise
- AXLDRIIVE™ Axle-based 4WD system
- Operator controlled locking rear differential and limited slip front differential
- Oscillating steer axle
- Drivable at full height
- 38% Gradeability
- Wet disc SAHR brakes (front and rear axle)
- Dual module control system with SKYCODED™ color coded and numbered wiring
- Kubota D1305 Tier 4F diesel engine
- Swing up cowlings for easy access
- Lockable power disconnect switch
- Proportional controls
- 660 / 1,000 lbs (300 / 454 kg) Dual capacity
- Bolt-in platform railing system
- Lanyard attachment points
- Tri-entry sliding mid-rails
- Secondary Guarding Electrical (SGE)
- Overload sensing system
- 110V AC Outlet on platform with GFI
- Tilt alarm (5.0° x 5.0°) with drive and lift cut-out
- Single point emergency lowering
- Hourmeter
- Operator horn
- All motion alarm
- 360° Continuous turret rotation
- Tie down/lifting lugs
- Grip lug foam-filled tires
- Telematics ready
- 2 Year Gold Leaf Warranty (5 year structural warranty)

Options†

- Kubota WG972 dual fuel engine..... **\$2,950**
- Flashing light..... **\$870**
- Side spring hinged entry gate..... **\$435**
- 3.5 kW generator..... **\$6,850**
- Welder ready package..... **\$14,365**
(Includes 7.5 kW generator, 3-phase power connection in platform, and welder mount)
- Cold weather start kit*..... **\$3,200**
*Recommended for regions where average monthly low temperatures can reach 14°F / -10°C (Includes cold start engine oil, battery blanket, and hydraulic tank heater)
- Arctic weather package*..... **\$4,805**
*Recommended for regions where average monthly low temperatures can reach -0.4°F / -18°C

- (Includes arctic engine oil, battery blanket, hydraulic tank heater, block heater, arctic hydraulic oil, and arctic gear oil in the axles and swing drive. Glow plugs, arctic hydraulic hoses (all), arctic platform rotator and oversized foot switch cover are also included (standard equipment).)

- Positive air shut-off valve (diesel only)..... **\$4,485**
- Bio oil..... **\$3,565**
- White noise alarm..... **\$345**
- Grip lug foam-filled non marking tires..... **\$1,790**
- Turf foam-filled tires..... **\$10,215**

Accessories‡

Please see page 75 for available aftermarket accessories.

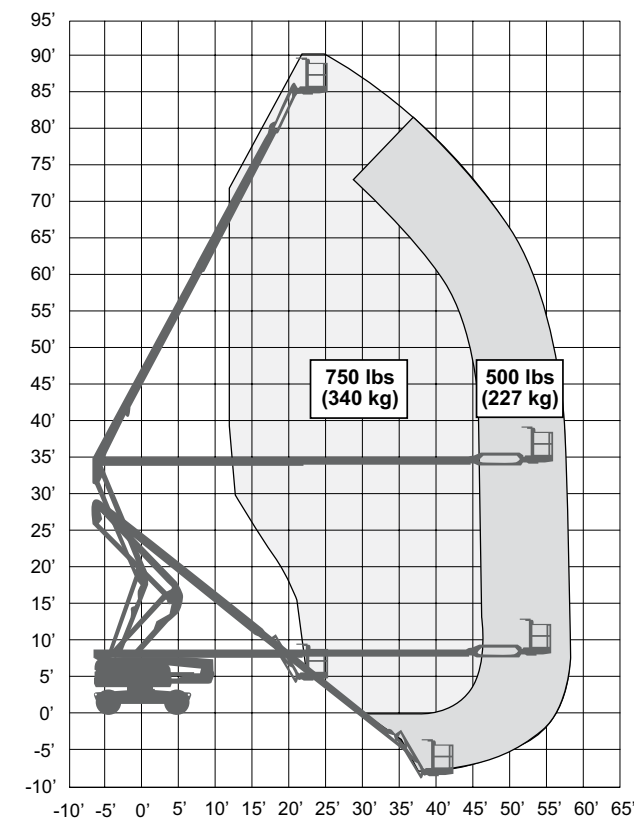
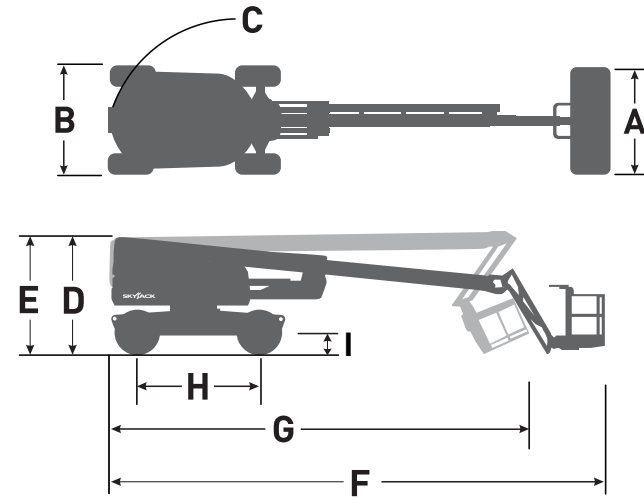


SJ85 AJ

ARTICULATING BOOM LIFTS

ANSI A92.20 AND CSA B354.6 COMPLIANT

Dimensions	SJ85 AJ
Work Height	91' (27.74 m)
Platform Height	85' (25.91 m)
Horizontal Reach	56' (17.07 m)
Up and Over Height	34' (10.36 m)
A Platform Size	36" x 96" (0.91 x 2.4 m)
B Stowed Width	8' 2" (2.49 m)
C Tailswing	2' 10" (0.86 m)
D Stowed Height	8' 9" (2.67 m)
E Transportation Height	8' 9" (2.67 m)
F Stowed Length	38' 2" (11.63 m)
G Transportation Length	32' 11" (10.03 m)
H Wheelbase	9' 4" (2.84 m)
I Ground Clearance	13.25" (0.34 m)



SJ85 AJ WORKING ENVELOPE

Specifications	SJ85 AJ
Rotation	360° Continuous
Platform Rotation	170°
Jib Length	5' 6" (1.68 m)
Jib Range +/-	+65° / -60°
Weight	36,300 lbs (16,465 kg)
Gradeability	45%
Turning Radius (Inside)	10' (3.05 m)
Turning Radius (Outside)	20' 5" (6.22 m)
Axle Oscillation	4" (10.16 cm)
Drive Speed (High speed)	3 mph (4.8 km/h)
Capacity	500 / 750 lbs (227 / 340 kg)
Maximum Wind Rating	28 mph (12.5 m/s)
Personnel Rating at Max Wind Rating	2 / 3
Tire Type	Foam-Filled
Tire Size	18-625
Diesel Engine	Deutz TD2.9L - 74 HP (55 KW)
Duel Fuel Engine	Kubota WG3800 - 87 HP (65 KW)
Fuel Tank Capacity	30.4 gal. (115 L)
Hydraulic Reservoir	45 gal. (170 L)

ARTICULATING BOOM LIFTS

LIST PRICING (USD) EFFECTIVE JANUARY 1ST, 2025

SJ85 AJ..... \$291,430

- 85' (25.91 m) Platform height
- 5'6" (1.68 m) Jib
- 500 / 750 lbs (227 / 341 kg) Dual capacity
- 56' (17.07 m) Horizontal reach
- 34' (10.36 m) Up and over height
- 360° Continuous Turret Rotation
- 36" x 96" (0.91 x 2.44 m) Platform size

Standard Features

- EASYDRIVE™ Direction sensing drive and steer controls
- SPEEDYREACH™ Negative boom angle capability
- SKYRISER™ True vertical rise
- AXLDRIIVE™ Axle-based 4WD system
- Operator controlled locking rear differential and limited slip front differential
- Oscillating steer axle
- Drivable at full height
- 45% Gradeability
- Wet disc SAHR brakes (front and rear axle)
- Relay based control system with SKYCODED™ color coded and numbered wiring
- Deutz TD2.9L4 diesel engine
- Swing out engine tray
- Swing up cowlings for easy access
- Lockable power disconnect switch
- Proportional controls
- Bolt-in platform railing system
- Lanyard attachment points
- Tri-entry sliding mid-rails
- Secondary Guarding Electrical (SGE)
- Overload sensing system
- 110V AC Outlet on platform with GFI
- Tilt alarm (5.0° x 5.0°) with drive and lift cut-out
- Single point emergency lowering
- Hourmeter
- Operator horn
- All motion alarm
- 360° Continuous turret rotation
- Tie down/lifting lugs
- Grip lug foam-filled tires
- Telematics ready
- 2 Year Gold Leaf Warranty (5 year structural warranty)

Options†

- Kubota WG3800 dual fuel engine..... **\$730**
- Flashing light **\$870**
- Side spring hinged entry gate..... **\$435**
- 3.5 kW generator **\$6,850**
(Includes hydraulic oil cooler)
- Welder ready package..... **\$14,365**
(Includes 12 kW generator, hydraulic oil cooler, 3-phase power connection in platform, and welder mount)
- Cold weather start kit* **\$3,200**

*Recommended for regions where average monthly low temperatures can reach 14°F / -10°C
(Includes cold start engine oil, battery blanket, hydraulic tank heater, and engine load kit (Deutz TD2.9L4))

- Arctic weather package* **\$4,805**

*Recommended for regions where average monthly low temperatures can reach -0.4°F / -18°C
(Includes arctic engine oil, battery blanket, hydraulic tank heater, engine load kit (Deutz TD2.9L4), block heater, arctic hydraulic oil, arctic platform rotator and arctic gear oil in the axles and swing drive. Glow plugs, arctic hydraulic hoses (all), and oversized foot switch cover are also included (standard equipment).)

- Hydraulic oil cooler **\$2,390**
- Positive air shut-off valve (diesel only) **\$4,485**
- Bio oil..... **\$5,960**
- White noise alarm **\$345**
- Grip lug foam-filled non marking tires..... **\$1,790**

Accessories†

Please see page 75 for available aftermarket accessories.





TELESCOPIC BOOM LIFTS

SPECIFICATIONS, FEATURES, AND PRICING



SJ40/45 T+



SJ61/66 T+



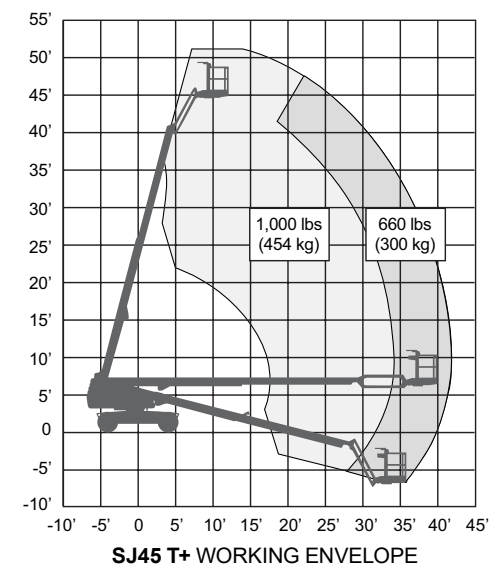
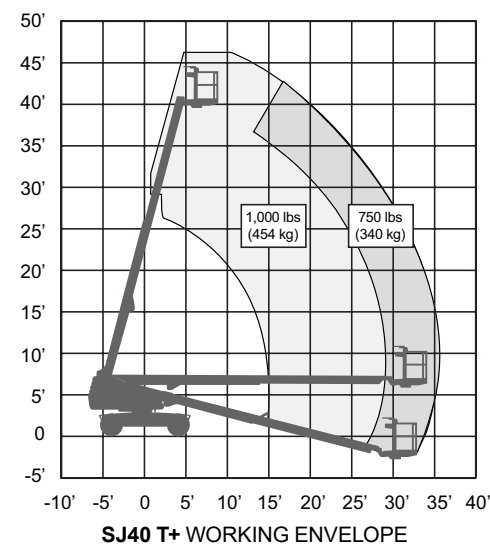
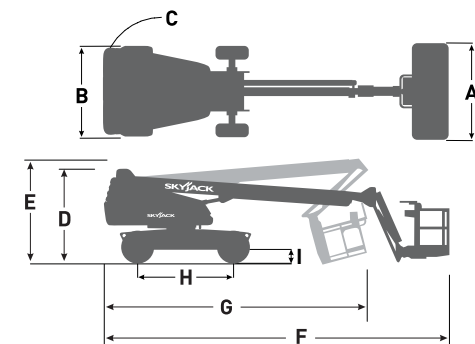
SJ82/86 T

SJ40/45 T+

TELESCOPIC BOOM LIFTS

ANSI A92.20 AND CSA B354.6 COMPLIANT

Dimensions	SJ40 T+	SJ45 T+
Work Height	46' 7" (14.20 m)	51' 1.5" (15.58 m)
Platform Height	40' 7" (12.37 m)	45' 1.5" (13.75 m)
Horizontal Reach	33' 11" (10.34 m)	39' 8.25" (12.10 m)
A Platform Size	36" x 96" (0.91 x 2.44 m)	36" x 96" (0.91 x 2.44 m)
B Stowed Width	7' 6" (2.29 m)	7' 6" (2.29 m)
C Tailswing	3' 8" (1.12 m)	3' 8" (1.12 m)
D Stowed Height	7' 10.5" (2.40 m)	7' 10.5" (2.40 m)
E Transportation Height	-	9' 7" (2.92 m)
F Stowed Length	25' 4.25" (7.73 m)	28' 11.5" (8.83 m)
G Transportation Length	-	22' 11" (6.99 m)
H Wheelbase	8' (2.44 m)	8' (2.44 m)
I Ground Clearance	10.75" (0.27 m)	10.75" (0.27 m)
Specifications	SJ40 T+	SJ45 T+
Rotation	360° Continuous	
Platform Rotation	170°	
Jib Length	-	5' (1.52 m)
Jib Range +/-	-	+65° / -60°
Weight	14,805 lbs (6,715 kg)	15,780 lbs (7,160 kg)
Gradeability	40%	
Turning Radius (Inside)	7' 6" (2.24 m)	7' 6" (2.24 m)
Turning Radius (Outside)	17' (5.18 m)	17' (5.18 m)
Axle Oscillation	5" (12.70 cm)	5" (12.70 cm)
Drive Speed (High speed)	2.5 mph (4.0 km/h)	
Capacity	750 / 1,000 lbs (340 / 454 kg)	660 / 1,000 lbs (300 / 454 kg)
Maximum Wind Rating	28 mph (12.5 m/s)	
Personnel Rating at Max Wind Rating	2 / 3	2 / 3
Tire Type	Foam-Filled / Solid	Foam-Filled / Solid
Diesel Engine	Kubota D1305 - 24.8 HP (18.5 KW)	
Fuel Tank Capacity	45 gal. (170 L)	
Hydraulic Reservoir	59 gal. (223 L)	



TELESCOPIC BOOM LIFTS

LIST PRICING (USD) EFFECTIVE JANUARY 1ST, 2025

SJ40 T+ \$148,915

- 40' 7" (12.37 m) Platform height
- 750 / 1,000 lbs (340 / 454 kg) Dual capacity
- 33' 11" (10.34 m) Horizontal reach
- 170° Platform rotation
- 36" x 96" (0.91 x 2.44 m) Platform size

SJ45 T+ \$161,410

- 45' 1.5" (13.75 m) Platform height
- 5' (1.52 m) Jib
- 660 / 1,000 lbs (300 / 454 kg) Dual capacity
- 39' 8.25" (12.10 m) Horizontal reach
- 170° Platform rotation
- 36" x 96" (0.91 x 2.44 m) Platform size

Standard Features

- EASYDRIVE™ Direction sensing drive and steer controls
- AXLDRIIVE™ Axle-based 4WD system
- Operator controlled locking rear differential and limited slip front differential
- Oscillating steer axle
- Drivable at full height
- 40% Gradeability
- Wet disc SAHR brakes (rear axle)
- Dual module control system with SKYCODED™ color coded and numbered wiring
- Kubota D1305 Tier 4F diesel engine
- Swing up cowlings for easy access
- Lockable power disconnect switch
- Proportional controls
- Bolt-in platform railing system
- Lanyard attachment points
- Tri-entry sliding mid rails
- Secondary Guarding Electrical (SGE)
- Overload sensing system
- 110V AC Outlet on platform with GFI
- Tilt alarm (5.0° x 5.0°) with drive and lift cut-out
- Single point emergency lowering
- Hourmeter
- Operator horn
- All motion alarm
- 360° Continuous turret rotation
- Tie down/lifting lugs
- Grip lug solid tires
- Telematics ready
- 2 Year Gold Leaf Warranty (5 year structural warranty)

Options†

- Flashing light **\$870**
- Side spring hinged entry gate **\$435**
- 3.5 kW generator **\$6,850**
- Welder ready package **\$14,365**
(Includes 7.5 kW generator, 3-phase power connection in platform, and welder mount)

Cold weather start kit* \$3,200

*Recommended for regions where average monthly low temperatures can reach 14°F / -10°C
(Includes cold start engine oil, battery blanket, and hydraulic tank heater)

Arctic weather package* \$4,805

*Recommended for regions where average monthly low temperatures can reach -0.4°F / -18°C
(Includes arctic engine oil, battery blanket, hydraulic tank heater, block heater, arctic hydraulic oil, and arctic gear oil in the axles and swing drive. Glow plugs, arctic hydraulic hoses (all), arctic platform rotator and oversized foot switch cover are also included (standard equipment).)

Positive air shut-off valve (diesel only) \$4,485

Bio oil \$6,210

White noise alarm \$345

Grip lug foam-filled tires (SJ45 T+ only) \$3,260

Grip lug foam-filled non-marking tires (SJ45 T+ only) \$3,510

Grip lug solid non-marking tires \$1,295

Turf foam-filled tires \$10,215

Accessories†

Please see page 76 for available aftermarket accessories.

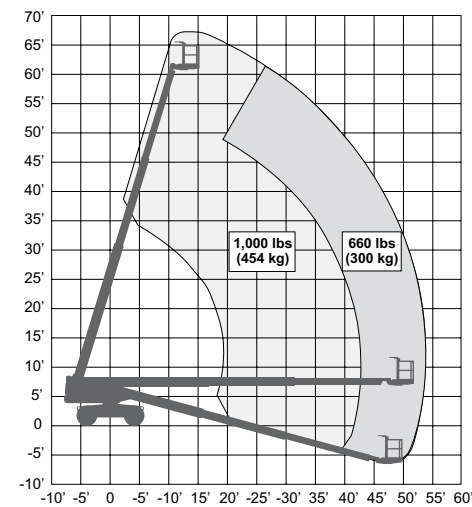
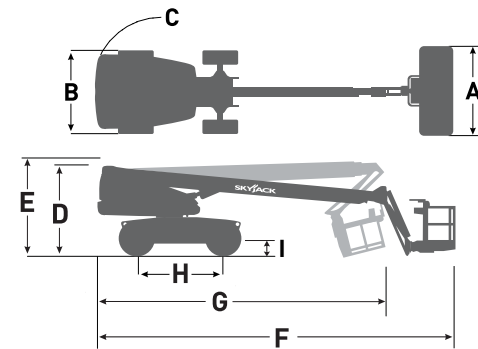


SJ61/66 T+

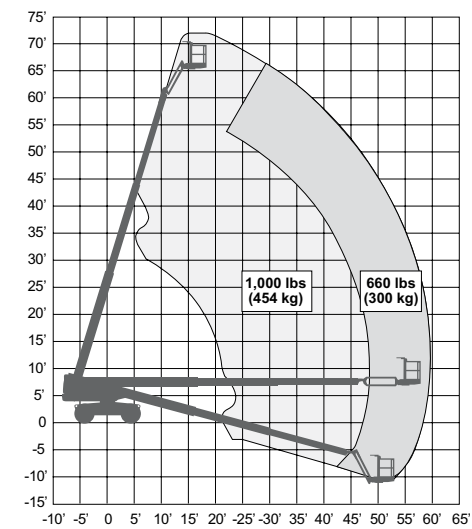
TELESCOPIC BOOM LIFTS

ANSI A92.20 AND CSA B354.6 COMPLIANT

Dimensions	SJ61 T+	SJ66 T+
Work Height	67' 8" (20.62 m)	72' 3" (22.02 m)
Platform Height	61' 8" (18.80 m)	66' 3" (20.19 m)
Horizontal Reach	51' 3" (15.62 m)	57' 0.25" (17.38 m)
A Platform Size	36" x 96" (0.91 x 2.44 m)	36" x 96" (0.91 x 2.44 m)
B Stowed Width	8' (2.44 m)	8' (2.44 m)
C Tailswing	4' 4" (1.33 m)	4' 4" (1.33 m)
D Stowed Height	8' 6" (2.59 m)	8' 6" (2.59 m)
E Transportation Height	-	10' 10" (3.30 m)
F Stowed Length	30' 3.75" (9.24 m)	34' 1.5" (10.40 m)
G Transportation Length	-	27' 5.5" (8.37 m)
H Wheelbase	8' (2.44 m)	8' (2.44 m)
I Ground Clearance	14.25" (0.36 m)	14.25" (0.36 m)
Specifications	SJ61 T+	SJ66 T+
Rotation	360° Continuous	
Platform Rotation	170°	170°
Jib Length	-	5' (1.52 m)
Jib Range +/-	-	+65° / -60°
Weight	25,050 lbs (11,365 kg)	27,745 lbs (12,585 kg)
Gradeability	50%	50%
Turning Radius (Inside)	6' 4" (1.93 m)	6' 4" (1.93 m)
Turning Radius (Outside)	16' 7" (5.05 m)	16' 7" (5.05 m)
Axle Oscillation	3.5" (8.89 cm)	3.5" (8.89 cm)
Drive Speed (High speed)	4.5 mph (7.2 km/h)	4.5 mph (7.2 km/h)
Capacity	660/1000 lbs (300/454 kg)	660/1000 lbs (300/454 kg)
Maximum Wind Rating	28 mph (12.5 m/s)	28 mph (12.5 m/s)
Personnel Rating at Max Wind Rating	2 / 3	2 / 3
Tire Type	Foam-Filled	Foam-Filled
Tire Size	15 x 19.5	15 x 19.5
Diesel Engine	Deutz TD2.9L - 74 HP (55 KW)	
Duel Fuel Engine	Kubota WG2503 - 61 HP (45 KW)	
Fuel Tank Capacity	45 gal. (170 L)	
Hydraulic Reservoir	60 gal. (227 L)	



SJ61 T+ WORKING ENVELOPE



SJ66 T+ WORKING ENVELOPE

TELESCOPIC BOOM LIFTS

LIST PRICING (USD) EFFECTIVE JANUARY 1ST, 2025

SJ61 T+ \$212,965

- 61' 8" (18.80 m) Platform height
- 660 / 1,000 lbs (300 / 454 kg) Dual capacity
- 51' 3" (15.62 m) Horizontal reach
- 170° Platform rotation
- 36" x 96" (0.91 x 2.44 m) Platform size

SJ66 T+ \$224,945

- 66' 3" (20.19 m) Platform height
- 5' (1.52 m) Jib
- 660 / 1,000 lbs (300 / 454 kg) Dual capacity
- 57' 0.25" (17.38 m) Horizontal reach
- 170° Platform rotation
- 36" x 96" (0.91 x 2.44 m) Platform size

Standard Features

- EASYDRIVE™ Direction sensing drive and steer controls
- AXLDRIIVE™ Axle-based 4WD system
- Operator controlled locking rear differential and limited slip front differential
- Oscillating steer axle
- Drivable at full height
- 50% Gradeability
- Wet disc SAHR brakes (front and rear axle)
- Dual module control system with SKYCODED™ color coded and numbered wiring
- Deutz TD2.9L4 diesel engine
- Swing out engine tray
- Swing up cowlings for easy access
- Lockable power disconnect switch
- Proportional controls
- Bolt-in platform railing system
- Lanyard attachment points
- Tri-entry sliding mid rails
- Secondary Guarding Electrical (SGE)
- Overload sensing system
- 110V AC Outlet on platform with GFI
- Tilt alarm (5.0° x 5.0°) with drive and lift cut-out
- Single point emergency lowering
- Hourmeter
- Operator horn
- All motion alarm
- 360° Continuous turret rotation
- Tie down/lifting lugs
- Grip lug foam-filled tires
- Telematics ready
- 2 Year Gold Leaf Warranty (5 year structural warranty)

Options†

- Kubota WG2503 dual fuel engine..... **N/C**
- Flashing light **\$870**
- Side spring hinged entry gate..... **\$435**
- 3.5 kW generator **\$6,850**
(Includes hydraulic oil cooler)
- Welder ready package..... **\$14,365**
(Includes 12 kW generator, hydraulic oil cooler, 3-phase power connection in platform, and welder mount)
- Cold weather start kit* **\$3,200**

*Recommended for regions where average monthly low temperatures can reach 14°F / -10°C (Includes cold start engine oil, battery blanket, hydraulic tank heater, and engine load kit (Deutz TD2.9L4))

- Arctic weather package* **\$4,805**

*Recommended for regions where average monthly low temperatures can reach -0.4°F / -18°C

(Includes arctic engine oil, battery blanket, hydraulic tank heater, engine load kit (Deutz TD2.9L4), block heater, arctic hydraulic oil, arctic platform rotator and arctic gear oil in the axles and swing drive. Glow plugs, arctic hydraulic hoses (all), and oversized foot switch cover are also included (standard equipment).)

- Hydraulic oil cooler **\$2,390**
- Positive air shut-off valve (diesel only) **\$4,485**
- Bio oil **\$6,195**
- White noise alarm **\$345**
- Grip lug foam-filled non marking tires..... **\$2,150**
- Turf foam-filled tires **\$12,535**

Accessories†

Please see page 76 for available aftermarket accessories.

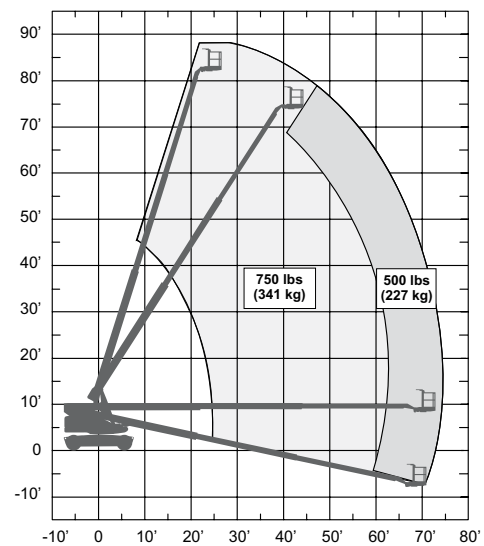
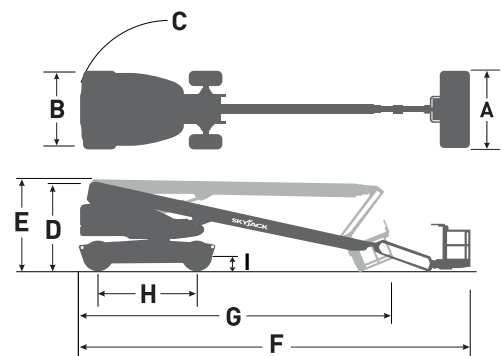


SJ82/86 T

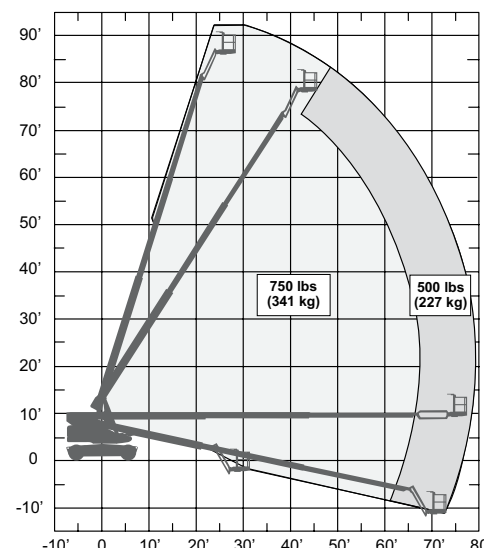
TELESCOPIC BOOM LIFTS

ANSI A92.20 AND CSA B354.6 COMPLIANT

Dimensions	SJ82 T	SJ86 T
Work Height	88' (26.82 m)	92' (28.04 m)
Platform Height	82' (24.99 m)	86' (26.21 m)
Horizontal Reach	72' 6" (22.10 m)	76' 10" (23.42 m)
A Platform Size	36" x 96" (0.91 x 2.44 m)	36" x 96" (0.91 x 2.44 m)
B Stowed Width	8' 2" (2.49 m)	8' 2" (2.49 m)
C Tailswing	4' 8" (1.42 m)	4' 8" (1.42 m)
D Stowed Height	9' 10" (3.00 m)	9' 10" (3.00 m)
E Transportation Height	-	10' 3" (3.13 m)
F Stowed Length	37' 10" (11.53 m)	42' 6" (12.95 m)
G Transportation Length	-	34' 9" (10.59 m)
H Wheelbase	11' (3.35 m)	132" (3.35 m)
I Ground Clearance	16" (0.41 m)	16" (0.41 m)
Specifications	SJ82 T	SJ86 T
Rotation	360° Continuous	
Platform Rotation	170°	170°
Jib Length	-	5' 6" (1.68 m)
Jib Range +/-	-	+65° / -60°
Weight	37,600 lbs (17,055 kg)	38,000 lbs (17,237 kg)
Gradeability	45%	45%
Turning Radius (Inside)	11' 6" (3.51 m)	11' 6" (3.51 m)
Turning Radius (Outside)	21' (6.40 m)	21' (6.40 m)
Axle Oscillation	4" (10.16 cm)	4" (10.16 cm)
Drive Speed (High speed)	3 mph (4.8 km/h)	3 mph (4.8 km/h)
Capacity	500 / 750 lbs (227 / 341 kg)	500 / 750 lbs (227 / 341 kg)
Maximum wind rating	28 mph (12.5 m/s)	28 mph (12.5 m/s)
Personnel Rating at Max Wind Rating	2 / 3	2 / 3
Tire Type	Foam-Filled	Foam-Filled
Tire Size	18-625	18-625
Diesel Engine	Deutz TD2.9L - 74 HP (55 KW)	
Fuel Tank Capacity	45 gal. (170 L)	
Hydraulic Reservoir	60 gal. (227 L)	



SJ82 T WORKING ENVELOPE



SJ86 T WORKING ENVELOPE

TELESCOPIC BOOM LIFTS

LIST PRICING (USD) EFFECTIVE JANUARY 1ST, 2025

SJ82 T..... \$295,315

- 82' (24.99 m) Platform height
- 500 / 750 lbs (227 / 341 kg) Dual capacity
- 72' 6" (22.10 m) Horizontal reach
- 170° Platform rotation
- 36" x 96" (0.91 x 2.44 m) Platform size

SJ86 T..... \$307,590

- 86' (26.21 m) Platform height
- 5' 6" (1.68 m) Jib
- 500 / 750 lbs (227 / 341 kg) Dual capacity
- 76' 10" (23.42 m) Horizontal reach
- 170° Platform rotation
- 36" x 96" (0.91 x 2.44 m) Platform size

Standard Features

- EASYDRIVE™ Direction sensing drive and steer controls
- AXLDRIIVE™ Axle-based 4WD system
- Operator controlled locking rear differential and limited slip front differential
- Oscillating steer axle
- Drivable at full height
- 45% Gradeability
- Wet disc SAHR brakes (front and rear axle)
- Relay based control system with SKYCODED™ color coded and numbered wiring
- Deutz TD2.9L4 diesel engine
- Swing out engine tray
- Swing up cowlings for easy access
- Lockable power disconnect switch
- Proportional controls
- Bolt-in platform railing system
- Lanyard attachment points
- Tri-entry sliding mid rails
- Secondary Guarding Electrical (SGE)
- Overload sensing system
- 110V AC Outlet on platform with GFI
- Tilt alarm (5.0° x 5.0°) with drive and lift cut-out
- Single point emergency lowering
- Hourmeter
- Operator horn
- All motion alarm
- 360° Continuous turret rotation
- Tie down/lifting lugs
- Grip lug foam filled tires
- Telematics ready
- 2 Year Gold Leaf Warranty (5 year structural warranty)

Options†

- Flashing light \$870
- Side spring hinged entry gate..... \$435
- 3.5 kW generator..... \$6,850
(Includes hydraulic oil cooler)
- Welder ready package..... \$14,365
(Includes 12 kW generator, hydraulic oil cooler, 3-phase power connection in platform, and welder mount)
- Cold weather start kit* \$3,200

*Recommended for regions where average monthly low temperatures can reach 14°F / -10°C (Includes cold start engine oil, battery blanket, hydraulic tank heater, and engine load kit (Deutz TD2.9L4))

- Arctic weather package* \$4,805

*Recommended for regions where average monthly low temperatures can reach -0.4°F / -18°C

(Includes arctic engine oil, battery blanket, hydraulic tank heater, engine load kit (Deutz TD2.9L4), block heater, arctic hydraulic oil, arctic platform rotator and arctic gear oil in the axles and swing drive. Glow plugs, arctic hydraulic hoses (all), and oversized foot switch cover are also included (standard equipment).)

- Hydraulic oil cooler \$2,390
- Positive air shut-off valve (diesel only) \$4,485
- Bio oil..... \$6,185
- White noise alarm \$345
- Grip lug foam-filled non marking tires..... \$2,150

Accessories†

Please see page 76 for available aftermarket accessories.



TELEHANDLERS

SPECIFICATIONS, FEATURES, AND PRICING



SJ519 TH



SJ643/843 TH



SJ1044/1056 TH



SJ1256 THS

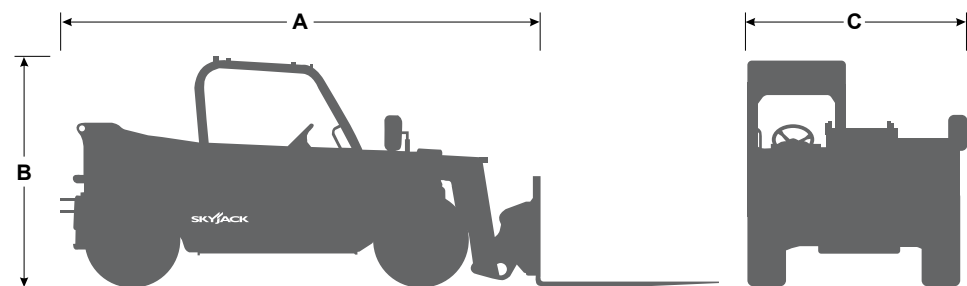
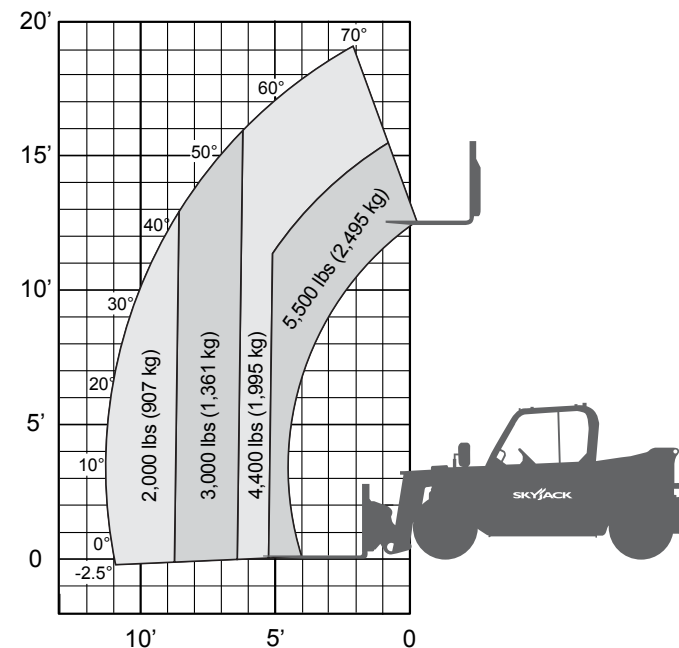


ZB2044

SJ519 TH

TH SERIES TELEHANDLERS

Specifications	SJ519 TH
Maximum Lift Capacity	5,500 lbs (2,495 kg)
Maximum Lift Height	19' 1" (5.82 m)
Rated Lift Capacity @ Maximum Height	4,400 lbs (1,996 kg)
Maximum Forward Reach	11'3" (3.44 m)
Rated Lift Capacity @ Maximum Reach	2,000 lbs (907 kg)
A Overall Length - Less Forks	13' 5" (4.09 m)
B Overall Height - Stowed	6' 4" (1.93 m)
C Overall Width	5' 11.5" (1.81 m)
Ground Clearance	11" (27.94 cm)
Turning Radius - Outside	125" (3.17 m)
Operating Weight	10,500 lbs (4,763 kg)
Engine	74hp/184 lb-ft Deutz TCD 2.2L
Max Travel Speed - Forward	15 mph (24 km/h)
Drawbar Pull	8,700 lbs
Breakout Force	10,600 lbs
Transmission	Hydrostatic, 1 F/R
Axles	Dana
Steering	3 Mode (Front-Wheel, 4 -Wheel, Crab)
Tires	Pneumatic 12 x 16.5 12PR Grip Lug
Fuel Tank Capacity	15.1 gal. (57 L)
Hydraulic Reservoir	18.7 gal. (70 L)



SKYCODED. **AXLDRIVE.** **FLEXCAB.** **FLEXDRIVE**

- IMPORTANT**
- Telehandler machine design complies with ANSI/ITSDF B56.6-2016 and CSA B335-16 stability requirements for rough terrain forklifts.
 - Rated capacities shown are with machine on firm level ground, steered straight with frame level and on properly inflated tires.
 - Read boom angle and boom extension, then determine allowable load from chart.
 - Do not exceed rated loads as dangerous and unstable machine conditions will result.
 - Always travel with boom retracted in the lowest possible position.

TELEHANDLERS

LIST PRICING (USD) EFFECTIVE JANUARY 1ST, 2025

SJ519 TH..... \$96,790

- 5,500 lbs (2,500 kg) Maximum lift capacity
- 19'1" (5.82 m) Maximum lift height
- 4,400 lbs (2,000 kg) Capacity @ maximum lift height
- 11'3" (3.44 m) Maximum forward reach
- 2,000 lbs (862 kg) Capacity @ maximum forward reach
- 1.5"x4"x48" Forks
- DPF & DEF Free Tier 4 Final Deutz TCD 2.2L engine
- Hydrostatic transmission
- 3 Mode steering
- 48" Floating pin carriage with 48" Pallet forks
- Air filled 12 x 16.5 grip lug tires

Standard Features

- Auxiliary hydraulics with hydraulic flow control valve
- Quick attach carriage mount
- Rear and side window
- Suspension seat
- Single multifunction pilot operated joystick control
- In cab engine multifunction display
- Hydraulic test ports
- Lockable in cab storage box
- Steel engine cowling
- Steel component and access covers
- Telematics ready
- 2 Year Gold Leaf Warranty (5 year structural warranty)

Forks[‡]

- Pallet, 1.5"x4"x48", 5,500lbs capacity **STD**
- Pallet, 1.5"x4"x60", 5,500lbs capacity (In lieu of standard) **\$235**
- For additional set of forks add to in lieu of price..... **\$1,180**

Carriages[‡]

- 48" Floating pin carriage **STD**
- 48" Side tilt (In lieu of standard)..... **\$3,465**
- For additional carriage add to in lieu of price **\$2,065**
- Hydraulic carriage connect **\$1,335**

Options[‡]

- Closed cab **\$4,465**
- Drive speed dial..... **\$270**
- Tilt steering **\$615**
- Air conditioning **\$3,650**
- Four wheel fenders **\$2,245**
- Road lights **\$1,170**
- Boom lights..... **\$815**
- Work lights **\$815**
- Rotating beacon **\$405**
- Back up sensor **\$2,490**
- Back up camera & sensor **\$5,855**
- Block heater **\$375**
- Cold weather package **\$1,190**
(Includes cold start engine oil, block heater, battery blanket & hydraulic tank heater)
- Service convenience package **\$295**
(Includes remote axle grease points & clean drain oil valve)
- White noise alarm **\$345**

Tire Options[‡]

- Foam filled 12 x 16.5 grip lug (In lieu of standard) **\$3,120**
- Airless solid rubber 33 x 12 (In lieu of standard) **\$4,400**
- Non-marking airless solid rubber 33 x 12 (In lieu of standard) **\$5,450**
- Turf air-filled tires **\$TBD**

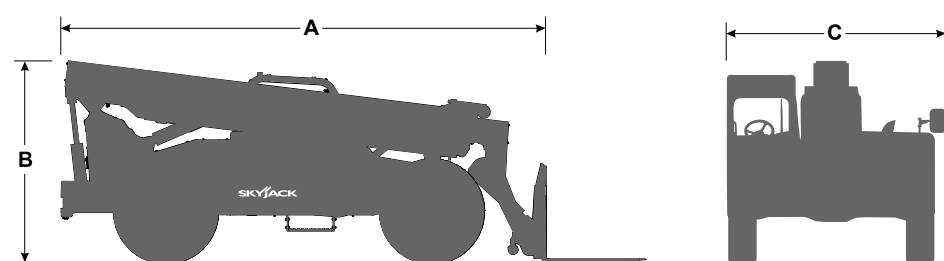
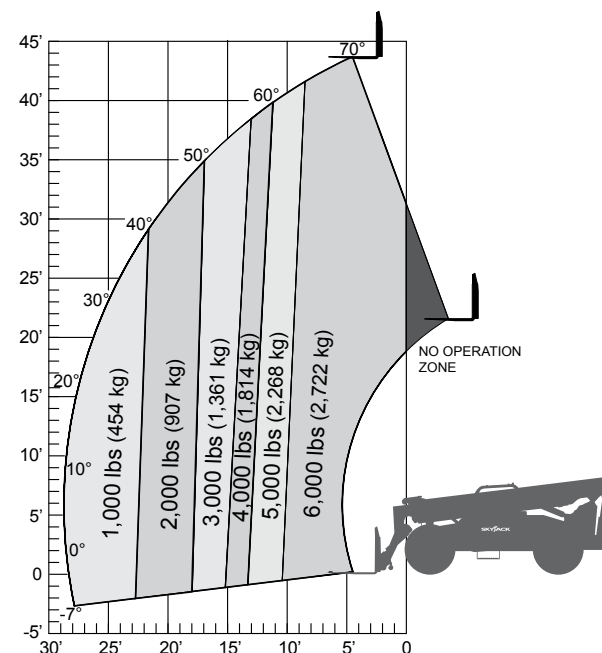
Additional Attachments[‡]

Please see page 76 for available aftermarket attachments / options.

SJ643 TH

TH SERIES TELEHANDLERS

Specifications	SJ643 TH
Maximum Lift Capacity	6,000 lbs (2,722 kg)
Maximum Lift Height	43' 4" (13.21 m)
Rated Lift Capacity @ Maximum Height	6,000 lbs (2,722 kg)
Maximum Forward Reach	28' 7" (8.71 m)
Rated Lift Capacity @ Maximum Reach	1,000 lbs (454 kg)
A Overall Length - Less Forks	19' 6" (5.94 m)
B Overall Height - Stowed	7' 11" (2.41 m)
C Overall Width	8' 5" (2.56 m)
Ground Clearance	19" (48.3 cm)
Turning Radius - Outside	147" (3.73 m)
Operating Weight	20,706 lbs (9,392 kg)
Engine	74 hp / 221 lb-ft Deutz TCD 2.2L T4F
Max Travel Speed - Forward	17mph (27 km/h)
Drawbar Pull	17,750 lbs
Transmission	Dana Powershift, 3 speeds F/R
Axles	Dana
Steering	3 mode (Front Wheel, 4-Wheel, Crab)
Tires	Foam-Filled 13 x 24 16PR Grip Lug
Fuel Tank Capacity	35.7 gal. (142 L)
Hydraulic Reservoir	43.85 gal. (166 L)



TELEHANDLERS

LIST PRICING (USD) EFFECTIVE JANUARY 1ST, 2025

SJ643 TH..... \$147,660

- 6,000 lbs (2,722 kg) Maximum lift capacity
- 43'4" (13.2 m) Maximum lift height
- 6,000 lbs (2,722 kg) Capacity @ maximum lift height
- 28'7" (8.7 m) Maximum forward reach
- 1,000 lbs (454 kg) Capacity @ maximum forward reach
- 2"x4"x48" Forks
- DPF & DEF Free Tier 4 Final 74 hp/221 lb-ft Deutz TCD 2.2L engine
- Powershift, 3 speed transmission
- 3 Mode steering
- 48" Floating pin carriage with 48" Pallet forks
- Foam filled 13 x 24 rough terrain tires

Standard Features

- Auxiliary hydraulics
- Engine block heater
- Quick attach carriage mount
- Rear window with wiper
- Side window
- Suspension seat
- Single multifunction pilot operated joystick control
- In cab engine multifunction display
- Hydraulic test ports
- Lockable in cab storage box
- Steel engine cowling
- Steel component and access covers
- Telematics ready
- 2 Year Gold Leaf Warranty (5 year structural warranty)

Forks[‡]

- Pallet 2"x4"x48", 8,000lbs capacity **STD**
- Pallet 2"x4"x60", 8,000lbs capacity (In lieu of standard) **\$375**
- Pallet 2"x5"x48", 9,200lbs capacity (In lieu of standard) **\$165**
- Pallet 2"x5"x60", 9,200lbs capacity (In lieu of standard) **\$350**
- Pallet 2.25"x5"x48", 12,000lbs capacity (In lieu of standard) **\$670**
- Pallet 2.25"x5"x60", 12,000lbs capacity (In lieu of standard) **\$785**
- Pallet 2.25"x5"x72", 12,000lbs capacity (In lieu of standard) **\$1,300**
- For additional set of forks add to in lieu of price..... **\$1,305**

Carriages[‡]

- 48" Floating pin carriage **STD**
- 60" Floating pin (In lieu of standard) **\$885**
- 72" Floating pin (In lieu of standard) **\$1,685**
- 72" Floating pin (SJ1256 THS carriage) (in lieu of standard) **\$TBD**
- 48" Floating pin, side tilting (In lieu of standard) **\$3,540**
- 60" Floating pin, side tilting (In lieu of standard) **\$4,430**
- 72" Floating pin, side tilting (In lieu of standard) **\$5,045**
- 72" Swing carriage (In lieu of standard) **\$6,950**
- For additional carriage add to in lieu of price **\$2,460**

Options[‡]

- Closed cab **\$6,260**
- Air conditioning (Closed cab only) **\$4,165**
- Premium joystick **\$3,605**
- Four wheel fenders **\$2,300**
- Road lights **\$1,150**
- Work lights **\$1,185**
- Boom lights **\$435**
- Rotating beacon **\$395**
- Backup sensor **\$2,450**
- Backup sensor and camera **\$5,755**
- Cold weather package **\$1,105**
(Includes cold start engine oil, battery blanket & hydraulic tank heater)
- Arctic weather package **\$2,585**
(Includes cold start engine oil, battery blanket & hydraulic tank heater, arctic hydraulic oil)
- Service convenience package **\$350**
(Includes remote axle grease points & clean drain oil valve)
- Pintle hitch **\$660**
- White noise alarm **\$345**

Tire Options[‡]

- Airless solid rubber 13 x 24 (In lieu of standard) **\$6,625**
- Non-marking airless solid rubber 13 x 24 (In lieu of standard) **\$12,105**

Additional Attachments[‡]

Please see page 76 for available aftermarket attachments / options.



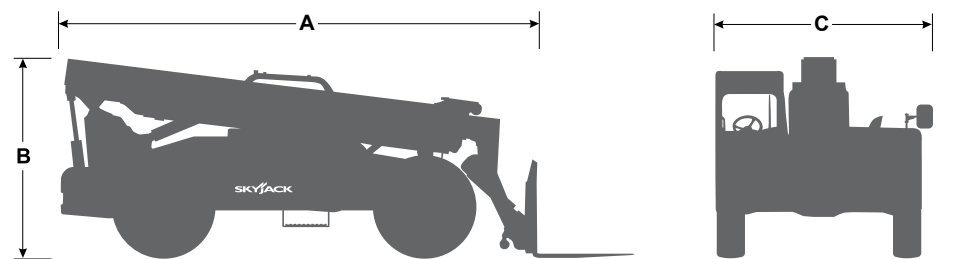
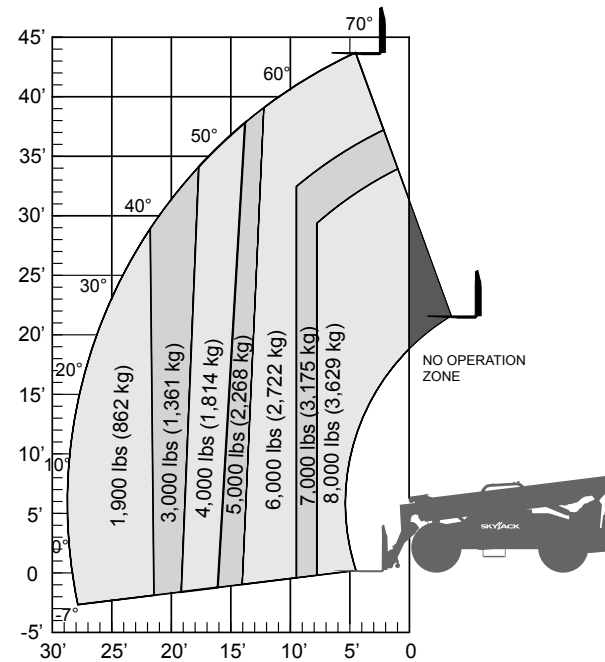
IMPORTANT

- Telehandler machine design complies with ANSI/ITSDF B56.6-2016 and CSA B335-15 stability requirements for rough terrain forklifts.
- Rated capacities shown are with machine on firm level ground, steered straight with frame level and on properly inflated tires.
- Read boom angle and boom extension, then determine allowable load from chart.
- Do not exceed rated loads as dangerous and unstable machine conditions will result.
- Always travel with boom retracted in the lowest possible position.

SJ843 TH

TH SERIES TELEHANDLERS

Specifications	SJ843 TH
Maximum Lift Capacity	8,000 lbs (3,629 kg)
Maximum Lift Height	43' 4" (13.21 m)
Rated Lift Capacity @ Maximum Height	6,000 lbs (2,722 kg)
Maximum Forward Reach	28' 7" (8.71 m)
Rated Lift Capacity @ Maximum Reach	1,900 lbs (862 kg)
A Overall Length - Less Forks	19' 6" (5.94 m)
B Overall Height - Stowed	7' 11" (2.41 m)
C Overall Width	8' 5" (2.56 m)
Ground Clearance	19" (48.3 cm)
Turning Radius - Outside	147" (3.73 m)
Operating Weight	23,006 lbs (10,435 kg)
Engine	74hp / 221 lb-ft Deutz TCD 2.2L T4F
Max Travel Speed - Forward	17mph (27 km/h)
Drawbar Pull	17,750 lbs
Transmission	Dana Powershift, 3 Speeds F/R
Axles	Dana
Steering	3 mode (Front Wheel, 4 Wheel, Crab)
Tires	Foam-Filled 13 x 24 16PR Grip Lug
Fuel Tank Capacity	35.7 gal. (142 L)
Hydraulic Reservoir	43.85 gal. (166 L)



TELEHANDLERS

LIST PRICING (USD) EFFECTIVE JANUARY 1ST, 2025

SJ843 TH..... \$159,245

- 8,000 lbs (3,629 kg) Maximum lift capacity
- 43'4" (13.2 m) Maximum lift height
- 6,000 lbs (2,722 kg) Capacity @ maximum lift height
- 28'7" (8.7 m) Maximum forward reach
- 1,900 lbs (862 kg) Capacity @ maximum forward reach
- 2"x4"x48" Forks
- DPF & DEF Free Tier 4 Final 74 hp/221 lb-ft Deutz TCD 2.2L engine
- Powershift, 3 speed transmission
- 3 Mode steering
- 48" Floating pin carriage with 48" Pallet forks
- Foam filled 13 x 24 rough terrain tires

Standard Features

- Auxiliary hydraulics
- Engine block heater
- Quick attach carriage mount
- Rear window with wiper
- Side window
- Suspension seat
- Single multifunction pilot operated joystick control
- In cab engine multifunction display
- Hydraulic test ports
- Lockable in cab storage box
- Steel engine cowling
- Steel component and access covers
- Telematics ready
- 2 Year Gold Leaf Warranty (5 year structural warranty)

Forks†

- Pallet 2"x4"x48", 8,000lbs capacity **STD**
- Pallet 2"x4"x60", 8,000lbs capacity (In lieu of standard) **\$375**
- Pallet 2"x5"x48", 9,200lbs capacity (In lieu of standard) **\$165**
- Pallet 2"x5"x60", 9,200lbs capacity (In lieu of standard) **\$350**
- Pallet 2.25"x5"x48", 12,000lbs capacity (In lieu of standard) **\$670**
- Pallet 2.25"x5"x60", 12,000lbs capacity (In lieu of standard) **\$785**
- Pallet 2.25"x5"x72", 12,000lbs capacity (In lieu of standard) **\$1,300**
- For additional set of forks add to in lieu of price..... **\$1,305**

Carriages‡

- 48" Floating pin carriage **STD**
- 60" Floating pin (In lieu of standard) **\$885**
- 72" Floating pin (In lieu of standard) **\$1,685**
- 72" Floating pin (SJ1256 THS carriage) (in lieu of standard) **\$TBD**
- 48" Floating pin, side tilting (In lieu of standard) **\$3,540**
- 60" Floating pin, side tilting (In lieu of standard) **\$4,430**
- 72" Floating pin, side tilting (In lieu of standard) **\$5,045**
- 72" Swing carriage (In lieu of standard) **\$6,950**
- For additional carriage add to in lieu of price **\$2,460**

Options‡

- Closed cab **\$6,260**
- Air conditioning (Closed cab only) **\$4,165**
- Premium joystick **\$3,605**
- Four wheel fenders **\$2,300**
- Road lights **\$1,150**
- Work lights **\$1,185**
- Boom lights **\$435**
- Rotating beacon **\$395**
- Backup sensor **\$2,450**
- Backup sensor and camera **\$5,755**
- Cold weather package **\$1,105**
(Includes cold start engine oil, battery blanket & hydraulic tank heater)
- Arctic weather package **\$2,585**
(Includes cold start engine oil, battery blanket & hydraulic tank heater, arctic hydraulic oil)
- Service convenience package **\$350**
(Includes remote axle grease points & clean drain oil valve)
- Pintle hitch **\$660**
- White noise alarm **\$345**

Tire Options‡

- Airless solid rubber 13 x 24 (In lieu of standard) **\$6,625**
- Non-marking airless solid rubber 13 x 24 (In lieu of standard) **\$12,105**

Additional Attachments‡

Please see page 76 for available aftermarket attachments / options.



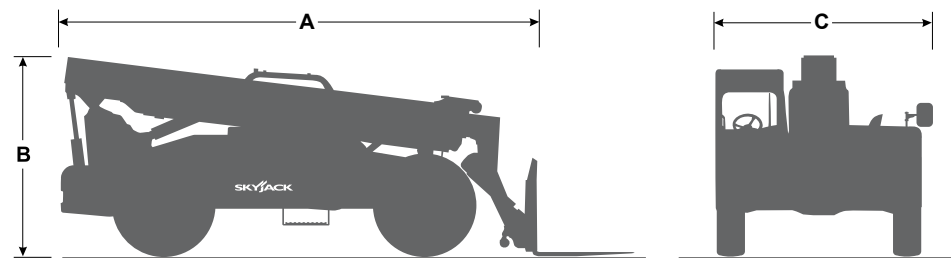
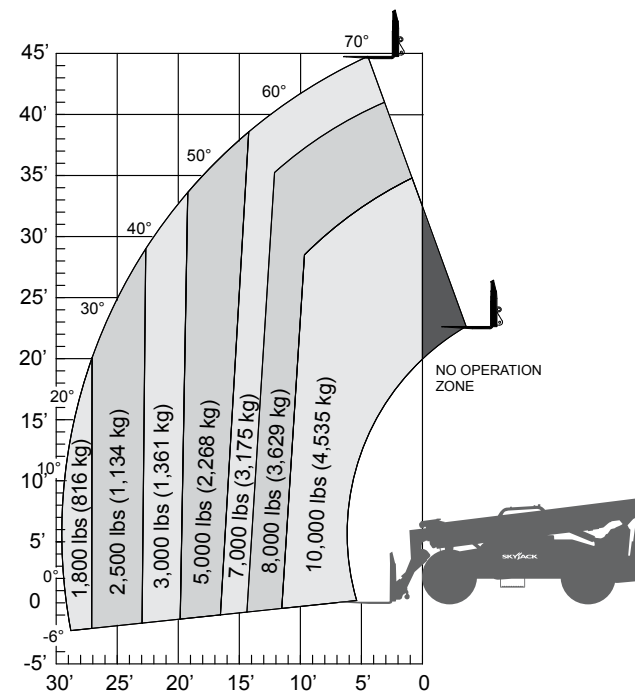
IMPORTANT

- Telehandler machine design complies with ANSI/ITSDF B56.6-2016 and CSA B335-15 stability requirements for rough terrain forklifts.
- Rated capacities shown are with machine on firm level ground, steered straight with frame level and on properly inflated tires.
- Read boom angle and boom extension, then determine allowable load from chart.
- Do not exceed rated loads as dangerous and unstable machine conditions will result.
- Always travel with boom retracted in the lowest possible position.

SJ1044 TH

TH SERIES TELEHANDLERS

Specifications	SJ1044 TH
Maximum Lift Capacity	10,000 lbs (4,535 kg)
Maximum Lift Height	44' 3" (13.49 m)
Rated Lift Capacity @ Maximum Height	7,000 lbs (3,175 kg)
Maximum Forward Reach	29'4" (8.94 m)
Rated Lift Capacity @ Maximum Reach	1,800 lbs (816 kg)
A Overall Length - Less Forks	21' 2" (6.45 m)
B Overall Height - Stowed	8' 1" (2.47 m)
C Overall Width	8' 5" (2.56 m)
Ground Clearance	19" (48.3 cm)
Turning Radius - Outside	153" (3.89 m)
Operating Weight	28,226 lbs (12,803 kg)
Engine	74hp / 287 lb-ft Deutz TCD 3.6L T4F
Max Travel Speed - Forward	15 mph (24 km/h)
Drawbar Pull	20,000 lbs
Transmission	Dana Powershift, 3 Speeds F/R
Axles	Dana
Steering	3 mode (Front-Wheel, 4-Wheel, Crab)
Tires	Foam-Filled 14 x 24 16PR Grip Lug
Fuel Tank Capacity	35 gal. (132 L)
Hydraulic Reservoir	43.85 gal. (166 L)



IMPORTANT

- Telehandler machine design complies with ANSI/ITSDF B56.6-2016 and CSA B335-15 stability requirements for rough terrain forklifts.
- Rated capacities shown are with machine on firm level ground, steered straight with frame level and on properly inflated tires.
- Read boom angle and boom extension, then determine allowable load from chart.
- Do not exceed rated loads as dangerous and unstable machine conditions will result.
- Always travel with boom retracted in the lowest possible position.

TELEHANDLERS

LIST PRICING (USD) EFFECTIVE JANUARY 1ST, 2025

SJ1044 TH \$180,250

- 10,000 lbs (4,535 kg) Maximum lift capacity
- 44'3" (13.49 m) Maximum lift height
- 7,000 lbs (3,175 kg) Capacity @ maximum lift height
- 29'4" (8.94 m) Maximum forward reach
- 1,800 lbs (816 kg) Capacity @ maximum forward reach
- 2.36"x4"x48" Forks
- DPF & DEF Free Tier 4 Final 74 hp/287 lb-ft Deutz TCD 3.6L engine
- Powershift, 3 speed transmission
- 3 Mode steering
- 48" Floating pin carriage with 48" Pallet forks
- Foam filled 14 x 24 rough terrain tires

Standard Features

- Auxiliary hydraulics
- Engine block heater
- Quick attach carriage mount
- Rear window with wiper
- Side window
- Suspension seat
- Single multifunction pilot operated joystick control
- In cab engine multifunction display
- Hydraulic test ports
- Lockable in cab storage box
- Steel engine cowling
- Steel component and access covers
- Telematics ready
- 2 Year Gold Leaf Warranty (5 year structural warranty)

Forks[‡]

- Pallet, 2.36"x4"x48", 10,000lbs capacity **STD**
- Pallet, 2.36"x4"x60", 10,000lbs capacity (In lieu of standard) **\$250**
- Pallet, 2.36"x4"x72", 10,000lbs capacity (In lieu of standard) **\$600**
- Pallet, 2.25"x5"x48", 12,000lbs capacity (In lieu of standard) **\$175**
- Pallet, 2.25"x5"x60", 12,000lbs capacity (In lieu of standard) **\$445**
- Pallet, 2.25"x5"x72", 12,000lbs capacity (In lieu of standard) **\$940**
- For additional set of forks add to in lieu of price..... **\$1,540**

Carriages[‡]

- 48" Floating pin carriage **STD**
- 60" Floating pin (In lieu of standard) **\$885**
- 72" Floating pin (In lieu of standard) **\$1,685**
- 72" Floating pin (SJ1256 THS carriage) (in lieu of standard) **\$TBD**
- 48" Floating pin, side tilting (In lieu of standard) **\$3,540**
- 60" Floating pin, side tilting (In lieu of standard) **\$4,430**
- 72" Floating pin, side tilting (In lieu of standard) **\$5,045**
- 72" Swing carriage (In lieu of standard) **\$6,950**
- For additional carriage add to in lieu of price **\$2,460**

Options[‡]

- Closed cab **\$6,260**
- Air conditioning (Closed cab only) **\$4,165**
- Premium joystick **\$3,605**
- Four wheel fenders **\$2,300**
- Road lights **\$1,150**
- Work lights **\$1,185**
- Boom lights **\$435**
- Rotating beacon **\$395**
- Backup sensor **\$2,450**
- Backup sensor and camera **\$5,755**
- Cold weather package **\$1,105**
(Includes cold start engine oil, battery blanket & hydraulic tank heater)
- Arctic weather package **\$2,585**
(Includes cold start engine oil, battery blanket & hydraulic tank heater, arctic hydraulic oil)
- Service convenience package **\$350**
(Includes remote axle grease points & clean drain oil valve)
- Positive air shut-off valve (only with 107hp Engine) **\$4,485**
- Pintle hitch **\$660**
- White noise alarm **\$345**

Optional Engine[‡]

- 107hp Deutz TCD3.6L **\$9,100**

Tire Options[‡]

- Airless solid rubber 13 x 24 (In lieu of standard) **\$5,320**
- Non-marking airless solid rubber 13 x 24 (In lieu of standard) **\$10,330**

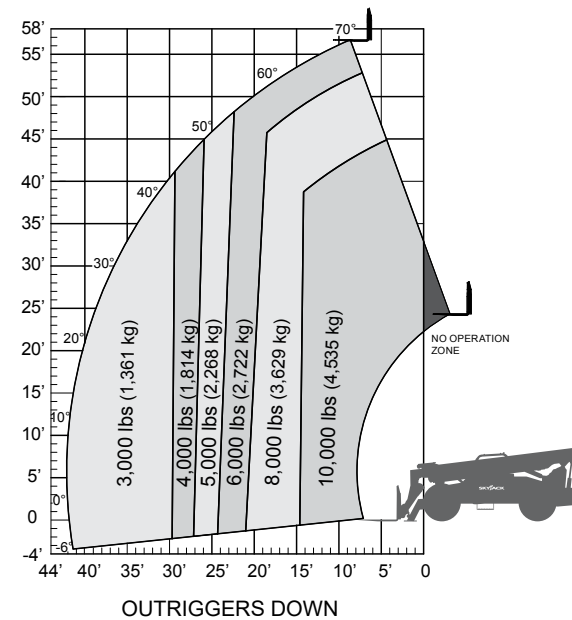
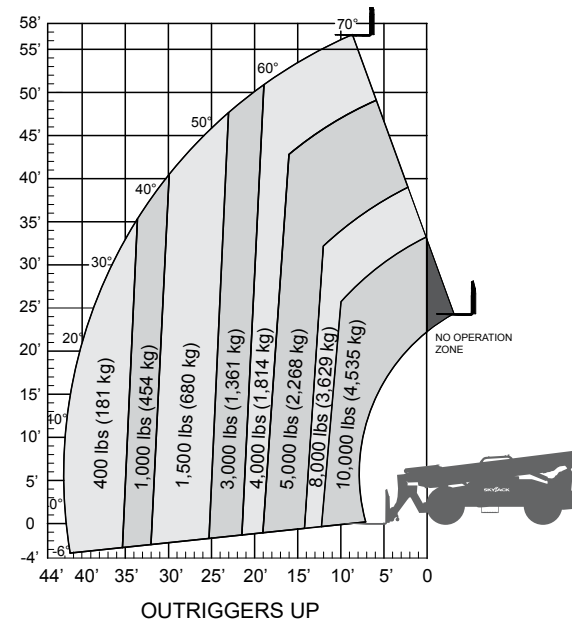
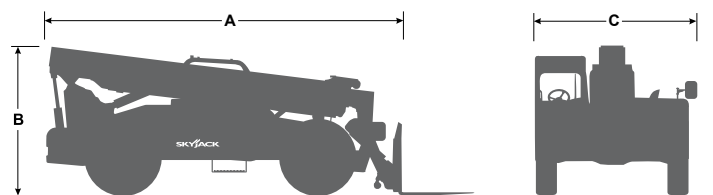
Additional Attachments[‡]

Please see page 76 for available aftermarket attachments / options.

SJ1056 TH

TH SERIES TELEHANDLERS

Specifications	SJ1056 TH
Maximum Lift Capacity	10,000 lbs (4,535 kg)
Maximum Lift Height	56' 3" (17.14 m)
Rated Lift Capacity @ Maximum Height	4,000 lbs (1,814 kg)
Rated Lift Capacity @ Max Height w. O/R	6,000 lbs (2,722 kg)
Maximum Forward Reach	42' 2" (12.85 m)
Rated Lift Capacity @ Maximum Reach	400 lbs (181 kg)
Rated Lift Capacity @ Max Reach w. O/R	3,000 lbs (1,361 kg)
A Overall Length - Less Forks	22' 2" (6.75 m)
B Overall Height - Stowed	8' 1" (2.47 m)
C Overall Width	8' 5" (2.56 m)
Ground Clearance	19" (48.3 cm)
Turning Radius - Outside	153" (3.89 m)
Operating Weight	33,336 lbs (15,121 kg)
Engine	74hp / 287 lb-ft Deutz TCD 3.6L T4F
Max Travel Speed - Forward	15 mph (24 km/h)
Drawbar Pull	20,000 lbs
Transmission	Dana Powershift, 3 Speeds F/R
Axles	Dana
Steering	3 mode (Front-Wheel, 4-Wheel, Crab)
Tires	Foam-Filled 14 x 24 16PR Grip Lug
Fuel Tank Capacity	35 gal. (132 L)
Hydraulic Reservoir	43.85 gal. (166 L)



TELEHANDLERS

LIST PRICING (USD) EFFECTIVE JANUARY 1ST, 2025

SJ1056 TH..... \$203,080

- 10,000 lbs (4,535 kg) Maximum lift capacity
- 56'3" (17.1 m) Maximum lift height
- 4,000 lbs (1,814 kg) Capacity @ maximum lift height
- 6,000 lbs (2,722 kg) Capacity @ maximum lift height (on outriggers)
- 42'2" (12.85 m) Maximum forward reach
- 400 lbs (181 kg) Capacity @ maximum forward reach
- 3,000 lbs (1,361 kg) Capacity @ maximum forward reach (on outriggers)
- 2.36"x4"x48" Forks
- DPF & DEF Free Tier 4 Final 74 hp/287 lb-ft Deutz TCD 3.6L engine
- Powershift, 3 speed transmission
- 3 Mode steering
- 48" Floating pin carriage with 48" Pallet forks
- Foam filled 14 x 24 rough terrain tires

Standard Features

- Axle mounted outriggers
- Auxiliary hydraulics
- Engine block heater
- Quick attach carriage mount
- Rear window with wiper
- Side window
- Suspension seat
- Single multifunction pilot operated joystick control
- In cab engine multifunction display
- Hydraulic test ports
- Lockable in cab storage box
- Steel engine cowling
- Steel component and access covers
- Telematics ready
- 2 Year Gold Leaf Warranty (5 year structural warranty)

Forks†

- Pallet, 2.36"x4"x48", 10,000lbs capacity **STD**
- Pallet, 2.36"x4"x60", 10,000lbs capacity (In lieu of standard) **\$250**
- Pallet, 2.36"x4"x72", 10,000lbs capacity (In lieu of standard) **\$600**
- Pallet, 2.25"x5"x48", 12,000lbs capacity (In lieu of standard) **\$175**
- Pallet, 2.25"x5"x60", 12,000lbs capacity (In lieu of standard) **\$445**
- Pallet, 2.25"x5"x72", 12,000lbs capacity (In lieu of standard) **\$940**
- For additional set of forks add to in lieu of price..... **\$1,540**

Carriages‡

- 48" Floating pin carriage **STD**
- 60" Floating pin (In lieu of standard) **\$885**
- 72" Floating pin (In lieu of standard) **\$1,685**
- 72" Floating pin (SJ1256 THS carriage) (in lieu of standard) **STBD**
- 48" Floating pin, side tilting (In lieu of standard) **\$3,540**
- 60" Floating pin, side tilting (In lieu of standard) **\$4,430**
- 72" Floating pin, side tilting (In lieu of standard) **\$5,045**
- 72" Swing carriage (In lieu of standard) **\$6,950**
- For additional carriage add to in lieu of price **\$2,460**

Options‡

- Closed cab **\$6,260**
- Air conditioning (Closed cab only) **\$4,165**
- Premium joystick **\$3,605**
- Four wheel fenders **\$2,300**
- Road lights **\$1,150**
- Work lights **\$1,185**
- Boom lights **\$435**
- Rotating beacon **\$395**
- Backup sensor **\$2,450**
- Backup sensor and camera **\$5,755**
- Cold weather package **\$1,105**
(Includes cold start engine oil, battery blanket & hydraulic tank heater)
- Arctic weather package **\$2,585**
(Includes cold start engine oil, battery blanket & hydraulic tank heater, arctic hydraulic oil)
- Service convenience package **\$350**
(Includes remote axle grease points & clean drain oil valve)
- Positive air shut-off valve (only with 107hp Engine) **\$4,485**
- Pintle hitch **\$660**
- White noise alarm **\$345**

Optional Engine‡

- 107hp Deutz TCD3.6L **\$9,100**

Tire Options‡

- Airless solid rubber 13 x 24 (In lieu of standard) **\$5,320**
- Non-marking airless solid rubber 13 x 24 (In lieu of standard) **\$10,330**

Additional Attachments‡

Please see page 76 for available aftermarket attachments / options.



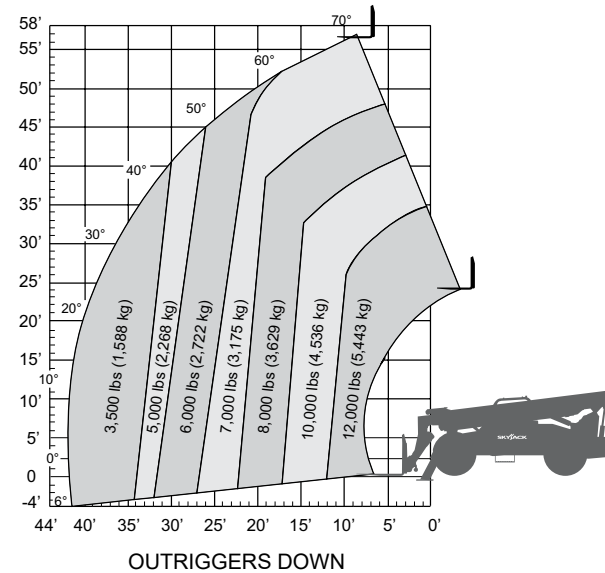
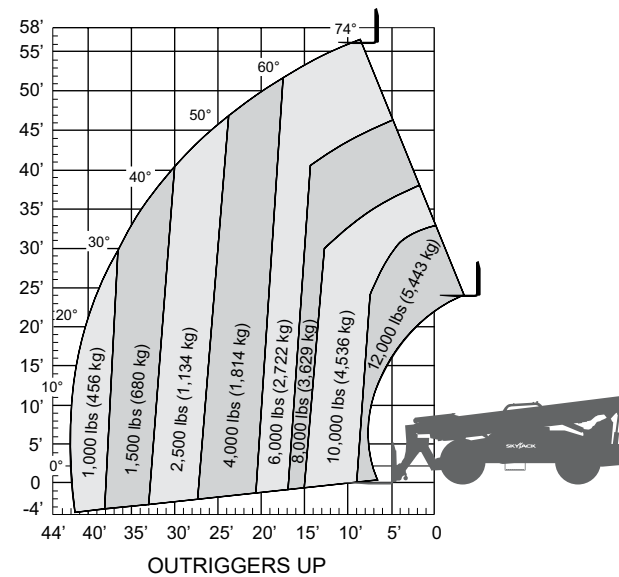
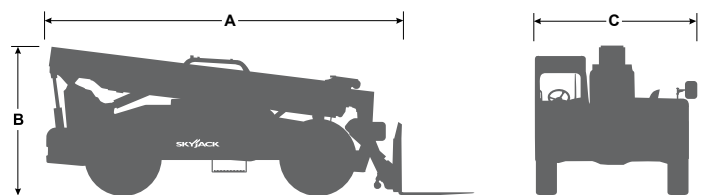
IMPORTANT

- Telehandler machine design complies with ANSI/ITSDF B56.6-2016 and CSA B335-15 stability requirements for rough terrain forklifts.
- Rated capacities shown are with machine on firm level ground, steered straight with frame level and on properly inflated tires.
- Read boom angle and boom extension, then determine allowable load from chart.
- Do not exceed rated loads as dangerous and unstable machine conditions will result.
- Always travel with boom retracted in the lowest possible position.

SJ1256 THS

TH SERIES TELEHANDLERS

Specifications	SJ1256 THS
Maximum Lift Capacity	12,000 lbs (5,443 kg)
Maximum Lift Height	56' 3" (17.14 m)
Rated Lift Capacity @ Maximum Height	6,000 lbs (2,722 kg)
Rated Lift Capacity @ Max Height w. O/R	7,000 lbs (3,175 kg)
Maximum Forward Reach	42' 4" (12.90 m)
Rated Lift Capacity @ Maximum Reach	1,000 lbs (454 kg)
Rated Lift Capacity @ Max Reach w. O/R	3,500 lbs (1,588 kg)
A Overall Length - Less Forks	23' 1" (7.03m)
B Overall Height - Stowed	8' 6" (2.59 m)
C Overall Width	8' 5" (2.56 m)
Ground Clearance	19" (48.3 cm)
Turning Radius - Outside	173" (4.39 m)
Operating Weight	36,625 lbs (16,613 kg)
Engine	107hp / 320 lb-ft Deutz TCD 3.6L T4F
Max Travel Speed - Forward	15 mph (24 km/h)
Drawbar Pull	22,500 lbs
Transmission	Dana Powershift, 3 Speeds F/R
Axles	Dana
Steering	3 mode (Front-Wheel, 4-Wheel, Crab)
Tires	Foam-Filled 14 x 24 16PR Grip Lug
Fuel Tank Capacity	35 gal. (132 L)
Hydraulic Reservoir	43.85 gal. (166 L)



TELEHANDLERS

LIST PRICING (USD) EFFECTIVE JANUARY 1ST, 2025

SJ1256 THS \$237,180

- 12,000 lbs (5,443 kg) Maximum lift capacity
- 56'3" (17.1 m) Maximum lift height
- 6,000 lbs (2,722 kg) Capacity @ maximum lift height
- 7,000 lbs (3,175 kg) Capacity @ maximum lift height (on outriggers)
- 42'4" (12.90 m) Maximum forward reach
- 1,000 lbs (545 kg) Capacity @ maximum forward reach
- 3,500 lbs (1,588 kg) Capacity @ maximum forward reach (on outriggers)
- 2.25"x5"x48" Forks
- Tier 4 Final 107 hp/320 lb-ft Deutz TCD 3.6L engine
- Powershift, 3 speed transmission
- 3 Mode steering
- 48" Floating pin carriage with 48" Pallet forks
- Foam filled 14 x 24 rough terrain tires

Standard Features

- Axle mount outriggers
- Auxiliary hydraulics
- Engine block heater
- Quick attach carriage mount
- Rear window with wiper
- Side window
- Suspension seat
- Single multifunction pilot operated joystick control
- In cab engine multifunction display
- Hydraulic test ports
- Lockable in cab storage box
- Steel engine cowling
- Steel component and access covers
- Telematics ready
- 2 Year Gold Leaf Warranty (5 year structural warranty)

Forks‡

- Pallet, 2.25"x5"x48", 12,000lbs capacity **STD**
- Pallet, 2.25"x5"x60", 12,000lbs capacity (In lieu of standard) **\$745**
- Pallet, 2.25"x5"x72", 12,000lbs capacity (In lieu of standard) **\$1,225**
- For additional set of forks add to in lieu of price..... **\$1,975**

Carriages‡

- 48" Floating pin carriage **STD**
- 60" Floating pin (In lieu of standard) **\$1,215**
- 72" Floating pin (In lieu of standard) **\$1,985**
- 48" Floating pin, side tilting (In lieu of standard) **\$3,640**
- 60" Floating pin, side tilting (In lieu of standard) **\$4,565**
- For additional carriage add to in lieu of price **\$2,525**

Options‡

- Closed cab **\$6,260**
- Air conditioning (Closed cab only) **\$4,165**
- Premium joystick **\$3,605**
- Four wheel fenders **\$2,300**
- Road lights **\$1,150**
- Work lights **\$1,185**
- Boom lights **\$435**
- Rotating beacon **\$395**
- Backup sensor **\$2,450**
- Backup sensor and camera **\$5,755**
- Cold weather package **\$1,105**
(Includes cold start engine oil, battery blanket & hydraulic tank heater)
- Arctic weather package **\$2,585**
(Includes cold start engine oil, battery blanket & hydraulic tank heater, arctic hydraulic oil)
- Service convenience package **\$350**
(Includes remote axle grease points & clean drain oil valve)
- Positive air shut-off valve **\$4,485**
- Pintle hitch **\$660**
- White noise alarm **\$345**

Tire Options‡

- Airless solid rubber 14 x 24 (In lieu of standard) **\$8,180**
- Non-marking airless solid rubber 14 x 24 (In lieu of standard) **\$16,150**

Additional Attachments‡

Please see page 76 for available aftermarket attachments / options.



IMPORTANT

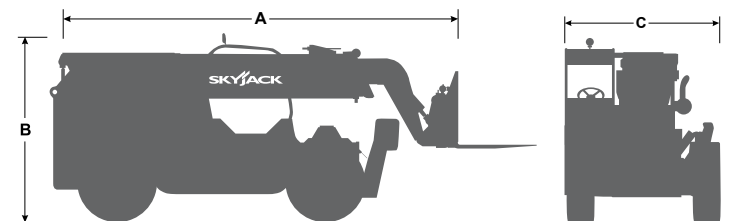
- Telehandler machine design complies with ANSI/ITSDF B56.6-2016 and CSA B335-15 stability requirements for rough terrain forklifts.
- Rated capacities shown are with machine on firm level ground, steered straight with frame level and on properly inflated tires.
- Read boom angle and boom extension, then determine allowable load from chart.
- Do not exceed rated loads as dangerous and unstable machine conditions will result.
- Always travel with boom retracted in the lowest possible position.

‡Standard lead times may be increased when optional equipment is added, consult factory. Capacities and machine weights may differ when options are added. This literature is for illustrative purposes only. Consult the Operating, Service and Parts manuals for proper procedures. Pricing is subject to change without notice. Option and attachment pricing valid only with new equipment purchases.

ZB2044

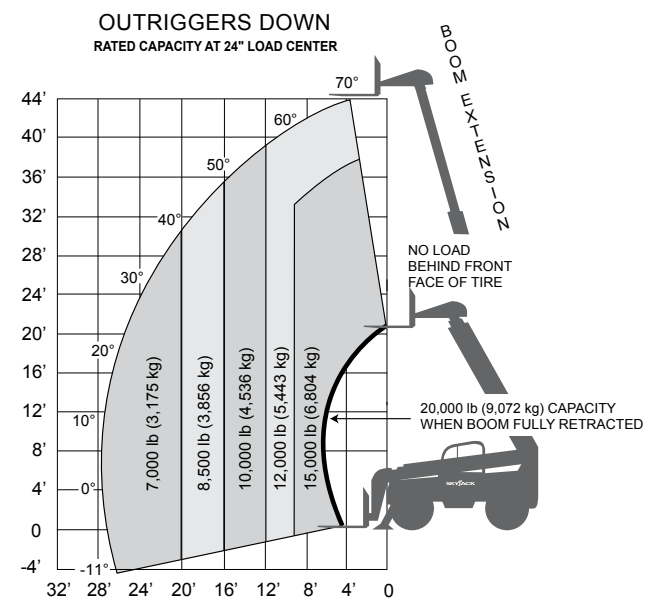
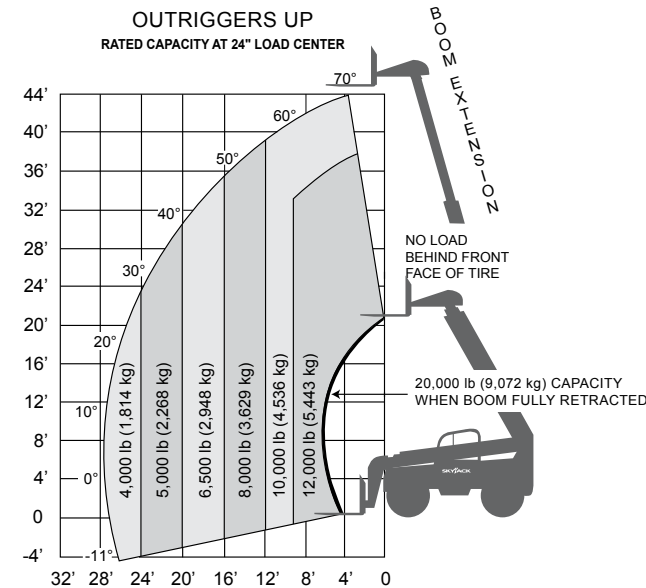
ZB SERIES TELEHANDLERS

Specifications	ZB2044
Maximum Lift Capacity	20,000 lbs (9,072 kg)
Maximum Lift Height	44' 10" (13.67 m)
Rated Lift Capacity @ Maximum Height	10,000 lbs (4,536 kg)
Rated Lift Capacity @ Maximum Height w. O/R	12,000 lbs (5,443 kg)
Maximum Forward Reach	27' 5" (8.36 m)
Rated Lift Capacity @ Maximum Reach	4,000 lbs (1,814 kg)
Rated Lift Capacity @ Maximum Reach w. O/R	7,000 lbs (3,175 kg)
A O/A Length - Less Forks	20' 3" (6.17 m)
B Overall Height - Stowed	9' (2.74 m)
C Overall Width	8' 6" (2.59 m)
Wheelbase	11' 6" (3.51 m)
Ground Clearance	18" (46 cm)
Turning Radius - Outside	18' 4" (5.59 m)
Operating Weight	45,000 lbs (20,412 kg)
Engine	168hp Cummins QSB 4.5C T4F
Max Travel Speed - Forward	20.5 mph (33 kph)
Transmission	Dana powershift, 3 speeds F/R
Axles	Axletech steerable outboard planetary
Service Brakes	4 wheel dry disc
Parking Brakes	Pinion mounted dry disc on front axle
Steering	3 mode (2-wheel, 4-wheel, crab)
Tires	Foam-Filled 17.5 x 25 16PR grip lug
Fuel Tank Capacity	48 gal. (185 L)
Hydraulic Reservoir	55 gal. (208 L)



AXLDRIVE

- IMPORTANT**
- Telehandler machine design complies with ANSI/ITSDF B56.6-2016 and CSA B335-15 stability requirements for rough terrain forklifts.
 - Rated capacities shown are with machine on firm level ground, steered straight with frame level and on properly inflated tires.
 - Read boom angle and boom extension, then determine allowable load from chart.
 - Do not exceed rated loads as dangerous and unstable machine conditions will result.
 - Always travel with boom retracted in the lowest possible position.



ZB SERIES TELEHANDLERS

LIST PRICING (USD) EFFECTIVE JANUARY 1ST, 2025

ZB2044 **\$467,310**

- 20,000 lbs (9,072 kg) Maximum lift capacity
- 44'10" (13.7 m) Maximum lift height
- 12,000 lbs (5,443 kg) Capacity @ maximum lift height
- 27'5" (8.4 m) Maximum forward reach
- 7,000 lbs (3,175 kg) Capacity @ maximum forward reach
- Cummins T4F QSB4.5C, turbocharged and charge-air-cooled diesel, 163hp @ 2500 rpm
- Powershift, 3 speed transmission
- 3 Mode steering
- 72" Floating pin carriage with 60" Pallet forks
- Foam filled 17.5 x 25 rough terrain tires

Standard Features

- Outriggers
- Rear axle "Stable-Lock" cylinder with backup accumulator
- Standard quick attach carriage mount system
- Auxiliary hydraulic group for boom attachments
- Dual lift cylinders
- High pivot boom mount design
- ROPS/FOPS certified cab
- Rear window and side screen
- Lockable under cab storage compartment / step
- Adjustable suspension seat with seat belt
- Dual joystick pilot operated controls for boom and frame level functions
- Tilt adjustable joystick console
- Gauge instrumentation
- Electronic powerview engine monitor/gauge
- Lockable steel swing up engine doors
- Engine grid heater
- Dual element air cleaner with flow restriction indicator
- Dual batteries
- Independent front/rear brake systems
- Dual brake accumulators for dead engine braking
- Brake activated transmission disconnect
- 55 gallon (208 L) steel hydraulic tank
- 49 gallon (185 L) steel fuel tank
- Horn and backup alarm
- Mirrors, right and left side
- Remote grease fittings for axle trunnion mount lubrication
- Easy to remove steel component and access covers
- Operator/maintenance and parts manuals
- Telematics ready
- 2 Year Gold Leaf Warranty (5 year structural warranty)

Additional Attachments†

5 ft Jib boom (20,000 lbs capacity)	\$17,215
2.0 cu. yd. Light material handling bucket	\$9,300
Hydraulic winch (15,000 lbs capacity)	\$15,805
Pipe and pole clamp	\$55,200
Rotating pipe and pole manipulator	\$48,910
Bridge stripper	\$14,350

Forks‡

Pallet, 2 3/4" x 6" x 60", 22,100lbs capacity	STD
Pallet, 2 3/4" x 6" x 72", 22,100lbs capacity (In lieu of standard)	\$520
Pallet, 2 3/4" x 6" x 96", 11,050lbs capacity (In lieu of standard)	\$2,850
For additional set of forks add to in lieu of price	\$4,900

Carriages‡

72" Floating pin carriage	STD
72" Dual hydraulic fork positioner (In lieu of standard)	\$7,150
84" Dual hydraulic fork positioner (In lieu of standard)	\$7,650
72" Side shift and dual hydraulic fork positioner (In lieu of standard) ..	\$16,150
84" Side shift and dual hydraulic fork positioner (In lieu of standard) ..	\$16,650
For additional carriage add to in lieu of price	\$5,450

Options‡

Flashing beacon light	\$495
Lighting kit w/ guards – 2 front white / 2 rear red	\$1,150
Front and rear turn signals w/ flashers	\$830
Extra operating light with guard	\$350
Boom mounted operating lights	\$825
Front and rear fenders	\$4,120
Fully enclosed operator cab,	\$10,255
(Includes sound insulation, heater, defroster, dome light, front and top windshield wiper)	
Air conditioning – requires enclosed cab option	\$7,660
Mine package	\$22,275
(Includes backup braking & steering systems, drive shaft covers)	
Backup sensor and camera	\$5,755
Positive air shut-off valve	\$4,485
Non destructive testing	\$1,595
White noise alarm	\$345



More than Telematics.

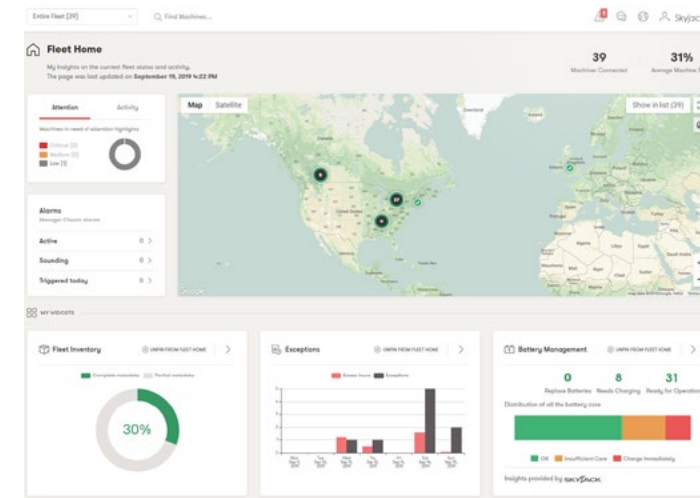
PACKAGE FEATURES	DIRECT	ENGAGE	ENGAGE +ACCESS
ELEVATE Manager		•	•
ELEVATE GO		•	•
ELEVATE Live	•	•	•
Ready to Operate indicator	•	•	•
True Utilization analysis	•	•	•
API Access for direct data feed*	•	•	•
Mixed fleet capability	•	•	•
Remote lockout			•
Access Control with RFID/PIN code			•
Real-time SMS or Email alerts/notifications		•	•
Service/hours notifications		•	•
Automatically generate historical reports		•	•
Trackunit RAW 600 hardware	•	•	•
Dual ID keypad IP 69 Rated			•
Transmits data every 15 minutes	•		
Transmits data on activity, or every 2 minutes		•	•
Field Kit available	•	•	•
BMS (Battery Management System)†	\$250	\$250	\$250
12 month package	\$705	\$790	\$910
36 month package	\$940	\$1,110	\$1,240
60 month package	\$1,100	\$1,375	\$1,495
Renewal packages available	•	•	•

ALL PACKAGES NOW INCLUDE BATTERY MANAGEMENT

*ERP pairing/API Access may require additional programming resources and advanced knowledge of database management – not included with ELEVATE packages.
 †BMS is only available with ELEVATE packages.

Richer Machine Data

Skyjack's next generation of scissor lifts and boom lifts provide even greater access to insights on machine usage, as well as ways to create more efficient processes, and increased profitability for their fleet.



Manager

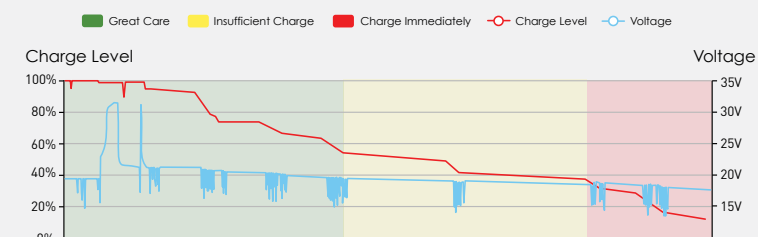
The insights-focused dashboard for ELEVATE Manager places trends and alerts that impact the rental company's bottom line right at the forefront.

The dashboard provides clear visual cues that draw attention to important information that impacts their day-to-day business processes.



ELEVATE Live provides operators access to the machine's current state of health and serials-pecific resources through a simple QR code.

In addition to live machine data, operators also have access to: Operator manuals, familiarization videos, serialized machine information, emergency lowering procedures, pre-use checklist, Quickstart guide.



ELEVATE BMS targets the largest cost of ownership on electric scissors by giving rental companies the ability to manage by measurement.

Users can now target the cost of battery replacement using accurate and immediate insight into how their batteries are treated in the field.

SALES AND SUPPORT WARRANTY TERMS AND POLICIES



1. NEW EQUIPMENT WARRANTY

The warranties described below are provided by Skyjack Inc. ("Skyjack") to the original purchaser ("Purchasers") of new Skyjack mobile elevating work platforms, namely vertical mast lifts, scissor lifts and boom lifts ("MEWP Products"), as well as telehandlers ("Telehandlers", and together with MEWP Products, the "Equipment"). Skyjack's liability with respect to the Equipment shall be limited to the Equipment Warranties (as defined below), which constitute Skyjack's entire and exclusive warranty as to the Equipment and is the sole and exclusive remedy for defects in material or workmanship.

A) Subject to the limitations and exclusions herein and subject to Sections 1(C) and 1(D), Skyjack warrants that, while using the Equipment in the country into which it was originally sold by Skyjack, if any component or part of the Equipment manufactured by Skyjack proves to be defective in material or workmanship within: (i) two (2) years from the date the Equipment was originally invoiced to the Purchaser, was put into service, or 3,000 hours of use, whichever occurs first or (ii) such other warranty period pursuant to any additional warranty purchased by Purchaser from Skyjack or provided by Skyjack in writing (each, a "Limited Equipment Warranty Period"), Skyjack will either repair or replace, at its option, any components or parts covered under this limited warranty which are determined by Skyjack in its sole discretion to be defective during the Limited Equipment Warranty Period, subject to the requirements set forth in Section 4 (the "Limited Equipment Warranty"). If any Structural Component (defined below) of the Equipment manufactured by Skyjack proves to be defective in material or workmanship thirty-six (36) months following the expiry of the Limited Equipment Warranty Period ("Structural Warranty Period"), Skyjack will either repair or replace, at its option, any Structural Components which are determined by Skyjack in its sole discretion to be defective at no charge ("Structural Component Warranty", and together with the Limited Equipment Warranty, the "Equipment Warranties"). "Structural Components" shall be limited to the following, as determined by Skyjack in its sole discretion, and will not include any other parts, components, or subassemblies: base frames and weldments, scissor arm weldments, scissor platform deck weldments (excluding railings and extension decks), boom section weldments, boom platform weldments (excluding railings and kick plates), frame weldments, vertical mast base frame, mast weldments, and vertical mast platform weldments (excluding railings and extension decks). In no event shall Skyjack's liability in respect of a Structural Component or a non-Structural Component exceed the cost to repair or replace the defective component.

B) Skyjack shall have no obligation to make any payments in lieu of repair of the Equipment in satisfaction of the Equipment Warranties, provided however, that Skyjack may elect to reimburse a Purchaser for certain reasonable costs incurred to repair or replace the Equipment covered by the Equipment Warranties, as determined by Skyjack in its sole discretion, which costs may include the Purchaser's labour costs at a rate determined by Skyjack in its sole discretion.

C) The Equipment Warranties are transferable by the Purchaser to subsequent purchasers of the Purchaser's Equipment ("Secondary Purchasers"). The Equipment Warranties assigned to Secondary Purchasers shall continue to be subject to the Limited Equipment Warranty Period, the Structural Warranty Period, and all other terms, conditions, and exclusions set forth herein.

D) Skyjack does not assume or authorize any person (including any distributor or dealer) to give any further warranty on Skyjack's behalf in respect of the Equipment or incur any additional obligation or liability on Skyjack's behalf.

2. LIMITATIONS AND EXCLUSIONS

A) THE EQUIPMENT WARRANTIES ARE IN LIEU OF ALL OTHER WARRANTIES, WHETHER WRITTEN OR ORAL, AND SHALL CONSTITUTE THE SOLE RECOURSE PURCHASER HAS AGAINST SKYJACK IN CONNECTION WITH ANY DEFECT IN THE EQUIPMENT. SKYJACK DISCLAIMS ALL OTHER WARRANTIES, WHETHER EXPRESS OR IMPLIED BY STATUTE, COMMON LAW, OR EQUITY, INCLUDING ANY WARRANTY OF MERCHANTABILITY OR FITNESS FOR A PARTICULAR PURPOSE. PURCHASER AGREES THAT SKYJACK SHALL NOT BE LIABLE TO PURCHASER UNDER ANY CIRCUMSTANCES FOR ANY CLAIMS ARISING FROM OR ATTRIBUTABLE TO LOSS OF BUSINESS, GOOD WILL, LOSS OF PROFITS, LOSS OF BUSINESS REPUTATION, OR ANY OTHER SPECIAL, INCIDENTAL, EXEMPLARY, PUNITIVE OR CONSEQUENTIAL DAMAGES.

B) The Equipment Warranties do not include coverage for any defects in the following parts and components of Equipment which are warranted separately (the "Supplier Components") by Skyjack's supplier ("Supplier"): (i) engines and engine components, (ii) tires, (iii) batteries, (iv) drive train components, including but not limited to, axles, transmissions, drive shafts, brakes, and brake components, and (v) telematics systems. For greater certainty, Skyjack is not responsible for, and Purchasers and Secondary Purchasers shall have no claim against Skyjack in respect of, any defects in the Supplier Components. Any warranty for the Supplier Components is provided through the original equipment manufacturer of such Supplier Components or its distributor organization.

C) Skyjack is not responsible for, and Purchasers and Secondary Purchasers shall have no claim against Skyjack, whether under the Equipment Warranties, in tort, contract, or equity, in respect of any damage arising from or related to:

- i) Depreciation or damage to the Equipment caused by normal wear and tear;
- ii) Consumables, such as filters, grease, fuel, hydraulic oil, engine oil, fuses, relays and diodes;
- iii) The cost of normal maintenance and replacement of wear items including, but not limited to, lamps, bulbs, wear pads, bushings, glass windows, windshield wipers, and tires;
- iv) Depreciation or damage resulting from accident, floods, fires or other natural disasters or acts of God, improper storage, abuse, rock damage, neglect, harsh environments or from use of the Equipment in a manner not intended by Skyjack;
- v) Electrical failures due to loose wiring or corrosion;

- vi) Duties, taxes, and environmental fees, including but not limited to, disposal or handling of tires, batteries and petrochemical items;
- vii) Third party accessories, including but not limited to welders; and
- viii) Damage resulting from failure to use or maintain the Equipment in accordance with Skyjack's instructions (including Skyjack's Operation Manual, Parts Manual or Service Manual, and any service advisories or bulletins published by Skyjack from time to time), or applicable law or technical standards (ex. ANSI, CSA, CE, SAIA, etc.).

D) Skyjack shall have no obligation to perform the Equipment Warranties or Limited Parts Warranty (as defined below) if:

- i) The Equipment has been operated with any accessory, equipment, component, or part not manufactured by Skyjack or not approved for use by Skyjack;
- ii) The Equipment has been repaired, altered, or modified without Skyjack's approval, or if the Equipment has been operated subsequent to its involvement in a tip over, accident, or breakdown, unless the Purchaser furnishes evidence which, in the sole determination of Skyjack, confirms that such repair, alteration, modification, or operation subsequent to its involvement in an accident or breakdown was not a cause of the defect;
- iii) The Purchaser does not within thirty (30) days from the date of discovery of the defect, and no longer than thirty (30) days after the end of the Limited Equipment Warranty Period, Structural Warranty Period, or Limited Parts Warranty Period (whichever is applicable), provide written notice of the defect in accordance with Skyjack's claim procedure (as described in Section 4). Purchaser shall furnish evidence establishing the date of discovery of the defect, as determined by Skyjack in its sole discretion;
- iv) The Equipment has depreciated or become damaged due to accident, floods, fires or other natural disasters or acts of God, improper storage, abuse, rock damage, neglect or use of the Equipment in a manner not intended by Skyjack;
- v) The Equipment is repaired, refurbished, or modified by someone other than Skyjack or an authorized technician with training and qualification in accordance with applicable laws and technical standards (ex. ANSI, CSA, CE, SAIA, etc.);
- vi) The Equipment has been exported out of the country into which it was originally sold by Skyjack; or
- vii) The hour meter on the Equipment is rendered inoperative or the reading is altered.

E) Nothing in subsection (D) shall prevent Skyjack from performing the Equipment Warranties if the effect of subsection (D) would otherwise cause Skyjack to refuse a means of diagnosis or repair to a Purchaser (including diagnostic and repair information, technical updates, diagnostic software or tools and any related documentation and service parts) in a manner that conflicts with applicable law.

F) Minor adjustments to the Equipment, such as loose fittings, loose hardware (bolts, nuts, screws), loose connections, recalibrations, and machine settings are only covered under the Equipment Warranties when detected and repaired during the initial machine delivery, or within ninety (90) days of the initial delivery of the Equipment to the Purchaser.

3. PARTS WARRANTY

A) Skyjack warrants that if any genuine factory model Skyjack component or part that is not a Supplier Component ("Factory Part") that is installed by Skyjack on Equipment in accordance with the Limited Equipment Warranty proves to be defective in material or workmanship within six (6) months from the date of the Factory Part invoice of such Factory Parts (the "Limited Parts Warranty Period"), or such other time as may be required by applicable law, Skyjack will either repair or replace, at its option, the defective Factory Part ("Limited Parts Warranty"). Skyjack shall have no obligation to make any payments in lieu of its obligation to repair or replace the Factory Part in satisfaction of the Limited Parts Warranty, provided however, that Skyjack may elect to reimburse a Purchaser for certain reasonable costs incurred to repair or replace the Factory Parts covered by the Limited Parts Warranty, as determined by Skyjack in its sole discretion, which costs may include the Purchaser's labour costs at a rate determined by Skyjack in its sole discretion.

B) Notwithstanding Section 3(A), Skyjack shall not be responsible for, and the Limited Parts Warranty shall not include (unless otherwise prohibited by applicable law): (i) any expenses associated with any service call(s) and/or transportation of Equipment to and from the Purchaser's place of business including, but not limited to, postage costs, shipping charges, insurance costs, and freight costs, (ii) any labour costs, and (iii) any service and/or maintenance not directly related to any defect covered under the Limited Parts Warranty.

4. WARRANTY CLAIM REQUIREMENTS

A) Any obligations owed by Skyjack to a Purchaser under the Limited Equipment Warranty, the Structural Components Warranty, and the Limited Parts Warranty (collectively, the "Warranty Services") shall be performed without charge to the Purchaser. All claims for Warranty Services must be submitted through the Skyjack Warranty Portal. If a Purchaser does not have a Skyjack Warranty Portal, they must contact the Skyjack Warranty Department at warranty@skyjack.com or 1-800-275-9522 Extension #4. Purchaser will be required to provide the following information related to the Equipment in order to make a valid claim for Warranty Services: the serial number, machine hours, failure date, description of failure, and any repairs undertaken by Purchaser. Upon request by Skyjack, Purchaser may be required to provide additional documentation, including but not limited to, photographs of the Equipment or Factory Part and/or confirmation of shipment of the Factory Part for Skyjack's further assessment. Purchaser shall be responsible for any costs associated with shipping the Factory Parts to Skyjack. An RMA number issued by the Skyjack Warranty Department is required for all returned parts. Following a complete assessment of the claim, Skyjack shall, at its sole discretion, either accept or reject the claim.

B) Failure to comply with the above procedures may delay approval and processing of claims and could result in the denial of a claim for Warranty Services. Purchaser must create and maintain a current account for the purchase of Factory Parts in order to receive warranty credits from Skyjack. Skyjack reserves the right to withhold the issuance of credits to a Purchaser if their account is not in good standing.

C) If Equipment or Factory Parts are received damaged, it must be noted by the Purchaser on the Bill of Lading prior to signature. For further information regarding Equipment or Factory Parts, please contact Skyjack at warranty@skyjack.com or 1-800-275-9522 Extension #4.

5. IMPROVEMENTS OR CHANGES

Skyjack reserves the right to make improvements or changes in design and specifications to subsequent models, designs, and iterations of the Equipment and Factory Parts at any time in its sole discretion, including through the use of service bulletins and advisories ("Improvements"). Nothing in this Warranty shall obligate Skyjack to fix, replace, upgrade, or modify the Equipment or Factory Parts to include any such Improvements.

EXTENDED WARRANTY PLANS*
LIST PRICING (USD) EFFECTIVE JANUARY 1ST, 2025

	2 years / 3000 hours	3 years / 4000 hours	5 years / 5000 hours
SJ12 E, SJ16 E, SJ20 E	n/c	\$932	\$2,796
SJ3213 micro, SJ3219 micro	n/c	\$952	\$2,855
SJ3215 E, SJ3219 E	n/c	\$952	\$2,855
SJ3220 E, SJ3226 E, SJ4726 E, SJ4732 E, SJ4740 E	n/c	\$1,384	\$4,152
SJ6826 RT, SJ6832 RT	n/c	\$3,018	\$9,054
SJ9233 RT, SJ9243 RT	n/c	\$5,002	\$15,025
SJ9253 RT, SJ9664 RT	n/c	\$6,149	\$18,447
SJ30 ARJE	n/c	\$4,455	\$13,365
SJ45 AJ+	n/c	\$5,697	\$17,091
SJ60 AJ+	n/c	\$8,316	\$24,948
SJ85 AJ	n/c	\$11,738	\$35,214
SJ40 T+, SJ45 T+	n/c	\$6,392	\$19,176
SJ61 T+, SJ66 T+	n/c	\$8,795	\$26,385
SJ82 T, SJ86 T	n/c	\$12,399	\$37,197
SJ519 TH	n/c	\$6,955	\$20,865
SJ643 TH	n/c	\$11,509	\$34,527
SJ843 TH	n/c	\$12,035	\$36,105
SJ1044 TH, SJ1056 TH	n/c	\$14,007	\$42,021
SJ1256 THS	n/c	\$16,727	\$50,181

*TERMS AND CONDITIONS:
Extended warranty applies to new machines only and follows the standard warranty policy and procedure for the machine(s) purchased. Extended warranties must be purchased at point of machinery purchase, may not be applied to units that have entered service nor is it transferable. Extended Warranty Plans will follow the terms in the Warranty Terms and Policies.

SALES AND SUPPORT
PARTS PURCHASE/RETURN POLICY

Effective JANUARY 1ST, 2025

As a Skyjack customer, you may be entitled to certain discounts on MEWP (Mobile Elevating Work Platform) and Telehandlers' parts purchased from Skyjack. Please contact Skyjack Parts to check your eligibility for a discount at 1-800-965-4626.

NOTE: All customers with approved credit rating may purchase parts on a Net 30 basis. Any discounts may be reduced if payment terms are not met.

All past due accounts will be assessed a 1-1/2% monthly, 18% annual service charge.

All discounts are applicable to current, published retail parts price list. Parts prices are subject to change without notice. If you have any questions or need additional information, please feel free to contact our Parts Department toll-free at 800-965-4626.

PARTS AND SERVICE

2525 Enterprise Circle, Suite 1
West Chicago, IL 60185 USA
Tel: (630) 262-0005, Fax: (630) 262-0006
Toll Free: (800) 275-9522, Fax: (888) 782-4825



ORDER PARTS ONLINE AT: www.skyjack.com/order-parts

PARTS RETURN

Authorization must be received prior to shipment of any return. All returns must be packaged in a manner to guard against damage. Additionally, the parcel should contain the RMA# near the shipping label as well as a copy of the RMA paperwork in the box.

SHIPPING ERRORS BY SKYJACK

If incorrect parts are shipped by Skyjack, the customer should report the discrepancy immediately to the Skyjack Parts Customer Service Department. The report must be made within five (5) working days after receipt. Upon authorization, parts should be returned prepaid with a packing list. The return number should be noted on the package, as well as returns must be packaged in a manner to guard against damage.

PARTS ORDERED IN ERROR BY CUSTOMER

A return request must be submitted to the Skyjack Parts Customer Service Department within thirty (30) days of receipt of shipment, based on tracking information. Only active stock parts will be accepted. Upon receipt of authorization, parts must be shipped prepaid with a packing list. The return number must be noted on package. All returns must be packaged in a manner to guard against damage.

ALL RETURNS ARE SUBJECT TO A 20% RESTOCKING CHARGE

After receipt and final inspection of the parts, credit will be issued at the original invoice price, less a 20% restocking charge. If the original invoice is not provided, Skyjack Parts Department will determine the credit amount.

ANY RETURN NOT SHIPPED PREPAID FREIGHT WILL BE RETURNED TO THE ADDRESS ON THE SHIPPING LABEL.

The following types of parts will not be accepted for return:

- Parts not originally ordered from Skyjack Parts
- Paint, Fluids, Decals, Railings, Manuals or Special ordered items
- Hardware items (nuts, bolts, washers)
- Any part that will not meet Skyjack's quality specification, and are not in new, resalable condition
- Parts purchased prior to the past 12 mo. Period, based on recent invoice dates
- Parts from repair kits or seal kits
- Parts with limited shelf life
- If sold as packs or kits any broken or less than full pack
- Any non-current or non-standard Parts
- Item with extended net value of less than \$25.00
- Structural components (boom sections, scissor stacks, base weldments, etc.)

PART ORDER CANCELLATION POLICY

All cancellations are subject to an approval by the Skyjack Parts Customer Service Department.



SKYCODED™

At the heart of every Skyjack mode, our color coded and numbered wiring system make Skyjack machines the easiest to troubleshoot and repair. This common feature not only adds simplicity and reliability, but it also integrates into Skyjack's evolving group of control system features – helping our customers keep their operating costs down.

AXLDRIVE™

Skyjack's mechanical axle-based drive system gives positive traction and excellent rough ground terrainability. This is achieved using an automatic or manual (model dependent) locking differential on the rear axle and limited slip differential on the front axle. This means machines can climb grades of up to 40% in the case of Rough Terrain Scissors Lifts, and up to 50% in the case of Boom Lifts. This industry-leading terrain capability means one can use Skyjack Rough Terrain Scissor Lifts and Boom Lifts in the most challenging of conditions.



SMARTORQUE™

Using an optimized balance of engine horse power, torque, and hydraulic performance, Skyjack SMARTORQUE™ products deliver the same on-site job performance as higher power units - providing excellent performance with less engine horsepower. Less emission controlling components avoids the cost associated with their complexity, as well as the time and inconvenience required in maintaining them. SMARTORQUE™ means no Diesel Particulate Filter (DPF), no Diesel Exhaust Fluid (DEF)/AdBlue, and no other active exhaust after treatment.



ECOTRAY™

ECOTRAY prevents potential leaks from Hydraulic systems dripping onto floors and other internal components. The Skyjack system removes the need for a cumbersome, unsightly "diaper" and is particularly suited for working on sensitive areas, such as decorative flooring, clean rooms and areas where hygiene and concern for chemical contamination are a priority. Unlike other systems that focus on the main hydraulic tray, ECOTRAY also protects against leaks from drive motors and steering cylinders.



RAPIDFOLD™

The SJ3219 E ANSI 92.20 model is now supplied with RAPIDFOLD as standard. The new system allows the top of the platform rails to quickly fold down, enabling access through standard doorways. Four quick release pins fold the rails within seconds.



XSTEP™ XSTEP^{micro}

Available on the SJ3215/9 E and SJ3213/9 micros, XStep maximizes reach and productivity by providing operators with safe, increased access into and around tight, restricted spaces, such as ceiling openings and ceiling mounted structures.



Rental companies and major contractors face increasing demands for sustainability information. Skyjack has introduced its ECO mark to support our customers by providing products that deliver benefits in environmental performance and long-term sustainability.

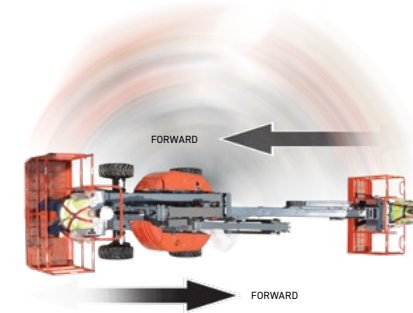
SPEEDYREACH™

Skyjack's SJ60 AJ+ and SJ85 AJ features a boom geometry that allows the operator to lower the main fly boom to ground level to restock on material or supplies then return to full height at the original working position - without lowering the riser section. It can be quickly executed and there is no need for machine repositioning or having to remember the sequence of operations to get back to the original working position - thus, improving productivity.



SKYRISER™

A unique feature found on Skyjack's articulating boom lifts. It ensures that the riser, and main pivot point connecting the fly boom to the riser, travel in a straight vertical line. Movement in a true vertical manner, without drifting forward or back, this reduces the amount of repositioning the operator needs to do in order to stay close to a building facade, improving productivity.



EASYDRIVE™

Unique boom feature only utilized by Skyjack where the boom lift controls are always in the orientation of the boom regardless of position of turret over chassis. Reduces operator confusion by eliminating the need for color coded arrows to determine drive versus joystick direction.

READYHOOK™

Skyjack's yoke-mounted lifting hook is fitted as standard on TH Series telehandlers. With capacities that match the maximum lift capability of the telehandler, the hook allows the safe underslinging of loads and avoids the practice of using the forks as an underslung lifting device.



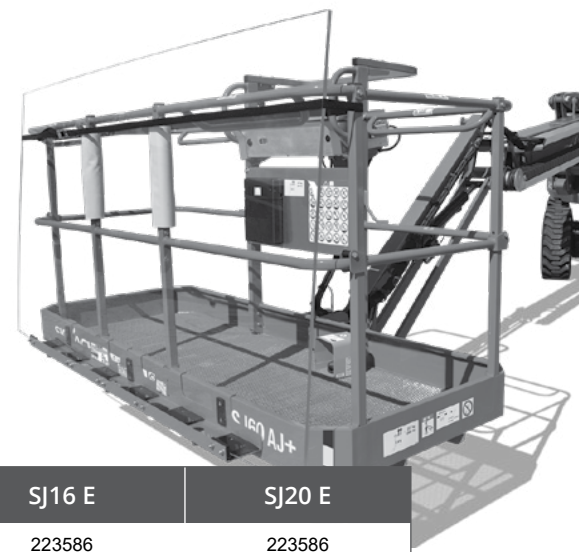
FLEXCAB™

Skyjack's TH Series telehandlers feature an innovative cab design that allows fleet operators to easily convert between open and enclosed cabs with simple hand tools, providing increased flexibility for fleet movement and fast response to customer demands. Easily sourced flat glass panels with no custom curved profiles and a bolt-on/bolt-off window retention system ensures minimal downtime and incurred costs for repairing damaged glass in the field.



Having equipment with features and functionality that allow you and your customers to do more is a vital part of the utilization equation. Skyjack offers a range of accessories to further expand a given product's ability to adapt and create a truly flexible rental choice.

To order, please contact our Parts department:
 email: parts@skyjack.com
 website: skyjack.com/order-parts
 Tel: (630) 262-0005, Fax: (630) 262-0006
 Toll Free: (800) 275-9522, Fax: (888) 782-4825



VERTICAL MAST LIFTS	SJ12 E	SJ16 E	SJ20 E
Light duty pipe rack	223586	223586	223586
Tool tray	223578		223578
Perimeter lights	TBD	TBD	TBD
Florescent tube carrier	223575	223575	223575

DC SCISSOR LIFTS	SJ3213/19 micro	SJ3215/19 E	SJ3220/26 E	SJ4726/32 E	SJ4740 E
Light duty pipe rack		212585	212585	212585	212585
Heavy duty pipe rack		235056	235056	235056	235056
Board carrier		235059	235059	235059	235059
XStep / XStep micro	256785	240033			
Perimeter lights	248789	246383	246383	246383	246383
Platform mesh				256159	256159
Tool caddy		204334	204334	204334	204334

RT SCISSOR LIFTS	SJ6826/32 RT	SJ9233/43/53 RT	SJ9664 RT
Heavy duty pipe rack	196511	196511	196511
Tool caddy	204334	204334	204334
Material handling stand		195198	195198
Diesel scrubber for tier 4 final engine	139447	220424	220424

ARTICULATING BOOM LIFTS	SJ30 ARJE	SJ45 AJ+	SJ60 AJ+	SJ85 AJ
Pipe rack	192820	148559	162052	162052
Glazier kit		169156	162073	
Tool caddy	204334	204334	204334	204334
Half height mesh platform	223225			
Platform mesh		256507 / 256515 / 256516	256506 / 256515 / 256516	256506 / 256515 / 256516
Control box cover	216918	216918	216918	216918
Auxiliary top rail (30 x 72" platform only)		152575		
Auxiliary top rail (36 x 96" platform only)			162056	163408
Diesel scrubber for tier 4 final engine (T4 Deutz Engine)			148419	148419
Diesel scrubber for tier 4 final engine (D1305 Engine)		238740	238740	
Diesel scrubber for tier 4 final engine (2011 L03i Engine)		149115		

TELESCOPIC BOOM LIFTS	SJ40/45 T+	SJ61/66 T+	SJ82/86 T
Pipe rack	162052	162052	162052
Glazier kit	162073	162073	162073
Tool caddy	204334	204334	204334
Auxiliary top rail (36 x 96" platform only)	163409	163409	163409
Platform mesh	256506 / 256515 / 256516	256506 / 256515 / 256516	256506 / 256515 / 256516
Control box cover	216918	216918	216918
Diesel scrubber for tier 4 final engine	148419	148419	
Lifting lugs			168730

TELEHANDLERS	SJ519 TH	SJ643/843 TH	SJ1044/1056 TH	SJ1256 THS
Skid steer attachment	9-206089			
6' Truss Boom	9-206855			
66" Bucket	9-206125			
2' High capacity jib boom		157121	157121	157121
12' Truss boom		59199513	59199513	59199513
15' Truss boom				9-920337
1.75 Cubic yard bucket		9-927450	9-927450	9-927450
Partially enclosed cab	205894			
Fire extinguisher bracket	206459	9-204194	9-204194	9-204194

CARRIAGES				
48" Side Shift Carriage	9-205240			
53" Fork Positioner Carriage		9-206173	9-206173	9-206173
72" Side Tilting QA Carriage		13198742	13198742	13198742
48" Side Tilting QA Carriage	9-205239			
72" Swing Carriage		9-930011	9-930011	9-930011

FORKS				
Fully tapered, 4.5"x4"x48", 5,500lbs capacity	9-206869			
Fully tapered 1.75"x7"x48", 12,000lbs capacity		9-930274	9-930274	9-930274
Block 4 of 2"x1.5"x48", 5,500lbs capacity	9-206301			
Block 6 of 2"x1.5"x46", 9,000lbs capacity		9-922006	9-922006	9-922006

ACCESSORYZERS™

Skyjack offers a full line of ACCESSORYZERS™ to improve your machine's versatility. These manufacturer-approved accessories are designed to add functionality to your machine and convenience for the operator. Whether it's helping you get materials to the work site, protecting equipment from the weather, or enhancing productivity, Skyjack has the right accessory for the job.

- Glazier kits
- Board carriers
- Tool carriers
- Pipe racks
- And many more



For the full range of Accessoryzers™ visit
www.skyjack.com/accessoryzers