

SJ45/60 AJHE+

HYBRID ELECTRIC ARTICULATING BOOMS



STANDARD FEATURES

- 23A automatic battery charger with battery condition indicator
- 415 Ah AGM batteries
- Integrated electric traction motor brake
- Low battery warning indicator light
- SMARTORQUE™ Kubota D902 Stage V diesel engine
- EASYDRIVE™ Direction sensing drive and steer controls
- SKYRISER™ True vertical rise
- AXLDRIIVE™ Axle-based 4WD system
- SKYCODED™ control system
- E-boom ECOSTART (Stop-Start system)
- Operator controlled locking rear differential and limited slip front differential
- Oscillating steer axle
- Drivable at full height
- 45% Gradeability
- Non-marking tyres
- Swing up cowlings for easy access
- Proportional controls
- Up to 454 kg capacities
- Bolt-in platform railings
- Lanyard attachment points
- Dual-entry sliding mid rails (SJ45 AJE+)
- Tri-entry sliding mid rails (SJ60 AJE+)
- Secondary Guarding Electrical (SGE)
- Overload sensing system
- Wiring for AC outlet on platform
- Tilt alarm (5.0° x 5.0°) with drive and lift cut-out
- Single point emergency lowering
- 355° Non-continuous turret rotation
- Tie down/lifting lugs
- Hourmeter
- Operator horn
- Lockable power disconnect switch
- All motion audible alarm
- White noise alarm
- 3.5kw generator



- 16% weight reduction
- 62% less fuel*



- Reduced emissions



- 3% reduction in engine noise (excl. alarms)
- White noise alarm



- 85% recyclable (by weight)



- E-boom ECOSTART (Stop-Start system)
- HVO compatible
- Bio-degradeable hydraulic oil – *optional*



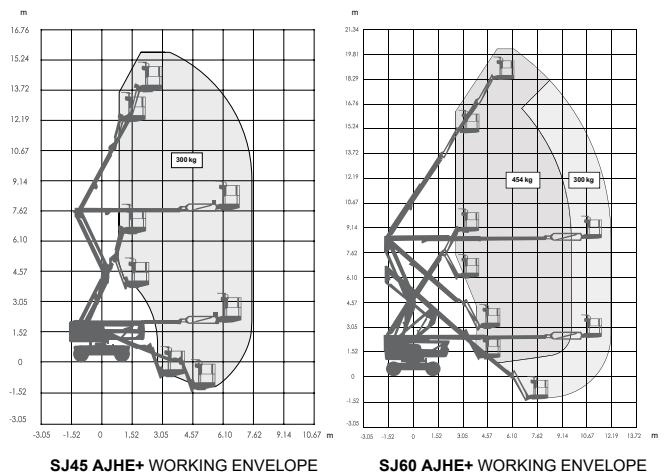
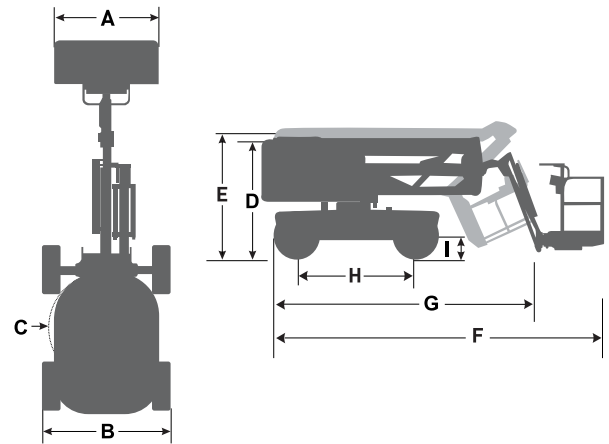
- Telematics – Remote diagnostics reduces site visits (operational carbon footprint)

*Compared to SJ63 AJ Stage IIIB

SKYJACK
simply reliable™

SJ45/60 AJHE+ HYBRID ELECTRIC ARTICULATING BOOMS

Dimensions	SJ45 AJHE+	SJ60 AJHE+
Work Height	15.72 m	20.29 m
Platform Height	13.72 m	18.29 m
Horizontal Reach	6.93 m	11.56 m
Horizontal Work Reach	7.53 m	12.16 m
Up and Over Height	7.45 m	8.31 m
A Platform Size	0.76 x 1.83 m	0.91 x 2.44 m
B Stowed Width	2.29 m	2.44 m
C Tailswing	0.61 m	0.61 m
D Stowed Height	2.06 m	2.54 m
E Transportation Height	2.37 m	2.79 m
F Stowed Length	6.00 m	8.59 m
G Transportation Length	4.75 m	6.60 m
H Wheelbase	2.03 m	2.44 m
I Ground Clearance	0.39 m	0.33 m
Specifications	SJ45 AJHE+	SJ60 AJHE+
Rotation	355° NC	
Platform Rotation	170°	
Jib Length	1.40 m	1.52 m
Jib Range +/-	+70° / -75°	+65° / -60°
Weight	5,685 kg	9,125 kg
Gradeability	45%	
Turning Radius (Inside)	1.50 m	2.21 m
Turning Radius (Outside)	4.34 m	5.31 m
Axle Oscillation	12.70 cm	10.16 cm
Drive Speed (High speed)	4.8 km/h	
Capacity	300 kg	300 / 454 kg
Maximum Wind Rating	12.5 m/s	12.5 m/s
Personnel Rating at Max Wind Rating	2	2 / 3
Tyre Size	10 x 31	14 x 610
Tyre Type	N/M Solid	N/M Foam-Filled
Batteries	415 Ah AGM	
Charge Time	0–100% <15 hrs / Bulk charge to 35%–85% <2.5 hrs	
Hydraulic Reservoir	91 L	115 L
Engine	Kubota D902	



ACCESSORIES

- Glazier kit
- Pipe rack
- Tool caddy

OPTIONS

- Flashing light
- 0.91 x 1.83 m platform (SJ60 AJHE+)
- Side spring hinged entry gate (SJ45 AJHE+)
- Rear spring hinged entry gate (SJ60 AJHE+)
- Control box cover
- Bio oil
- ELEVATE telematics

www.skyjack.com

Skyjack Australia

Unit 1, 35 Honeycomb Drive
Eastern Creek
New South Wales 2766
Australia
Tel: +61 (0) 2 9854 0700
Fax: +61 (0) 2 9854 0777
Email: jcranmer@skyjack.com

SKYJACK
simply reliable

This brochure is for illustrative purpose only and based on the latest information at the time of printing. Skyjack Inc. reserves the right to make changes at any time, without notice, to specifications, standard and optional equipment. Consult the Operating Maintenance and Parts Manuals for proper procedures. AS marked platforms are in conformance to Standard AS/NZS 1418.10:2011.