



TECHNICAL SERVICE

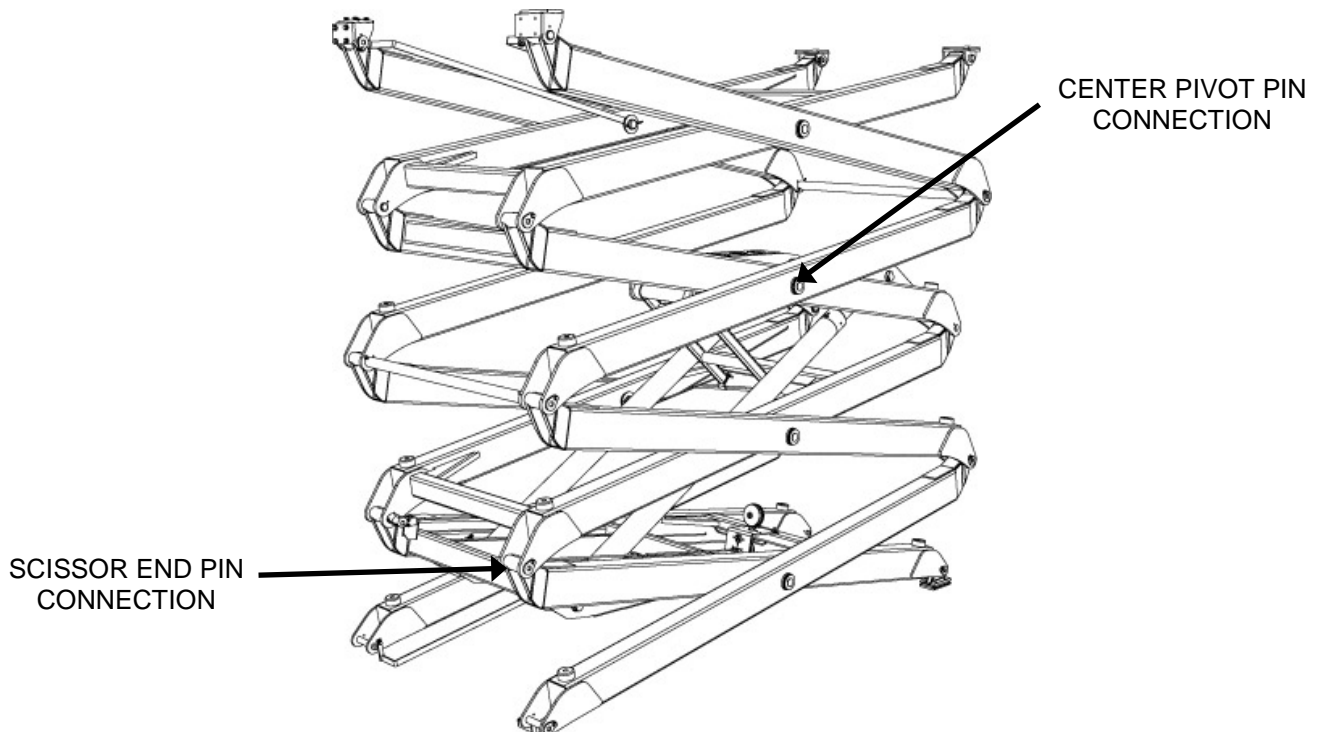
**Service Advisory**  
Date: December 2011

SKYJACK TECHNICAL SERVICE 3451 SWENSON AVE. ST. CHARLES, IL. 60174  
TOLL FREE: **800-275-9522** PHONE: 630-262-0005 FAX: 630-262-0006

**SCISSOR ARM PIVOT PINS – INSPECTION**  
**APPLIES TO: ALL SKYJACK SCISSOR LIFT MODELS**

As set forth in the applicable Skyjack Operating and Service Manuals, operators and owners are responsible for conducting various regular inspections of the scissor lift. The following supplementary instructions provide further detail for the regular structural inspection of scissor assembly pin connections. As outlined in Skyjack manuals and various applicable regulations, this inspection must be completed as part of the required daily, frequent, 6-month and yearly inspections. If these inspections have not been performed on a regular basis, an inspection by a qualified person should be performed **immediately**. Any units with structural damage to any pin connection or scissor arm must be **immediately removed from service** until repaired by a qualified technician.

On all scissor assemblies, the scissor arm end pins and center pins (see Figure 1) must be regularly inspected for signs of damage or excessive wear. **Failure to inspect and properly maintain pinned connections can lead to scissor arm failure and assembly collapse, potentially causing serious injury and/or death.**



**Figure 1: Scissor assembly showing pin connection points**

SKYJACK TECHNICAL SERVICE 3451 SWENSON AVE. ST. CHARLES, IL. 60174  
TOLL FREE: 800-275-9522 PHONE: 630-262-0005 FAX: 630-262-0006

**SCISSOR ARM PIVOT PINS – INSPECTION**  
**APPLIES TO: ALL SKYJACK SCISSOR LIFT MODELS**

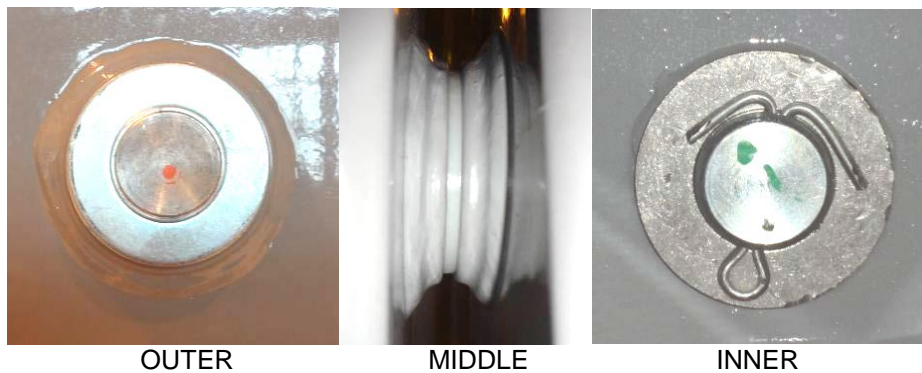
During the structural inspection, indicators of potential pin and/or scissor arm damage include, but are not limited to:

- Noise coming from binding/seized pins
- Rust forming near pin connection
- Cracks in welds or in surrounding metal
- Evidence of metal dust or shavings from wearing components
- Broken/missing pin retainer bolts
- Broken/missing pin retainers
- Rotated pin
- Elongation/enlargement of pin hole

Samples of pin connections showing no damage (Figure 2 and Figure 3) are shown below.



**Figure 2: Scissor end pin connection - no evidence of damage**



**Figure 3: Center pivot pin connection – no evidence of damage**



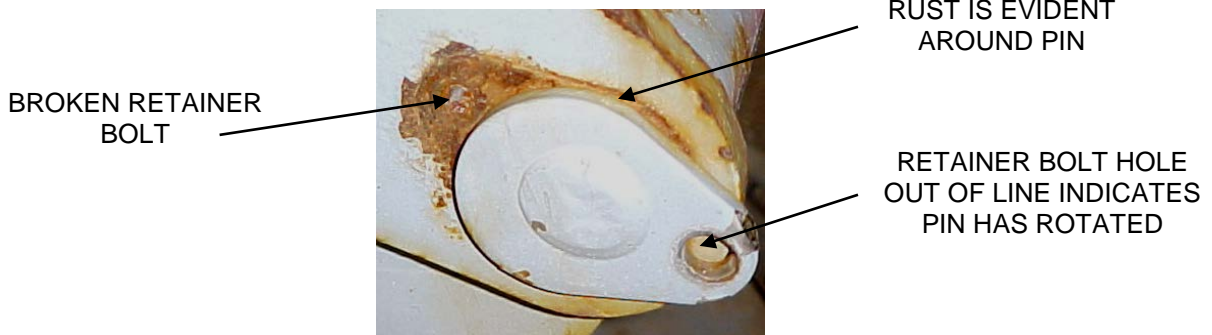
TECHNICAL SERVICE

**Service Advisory**  
Date: December 2011

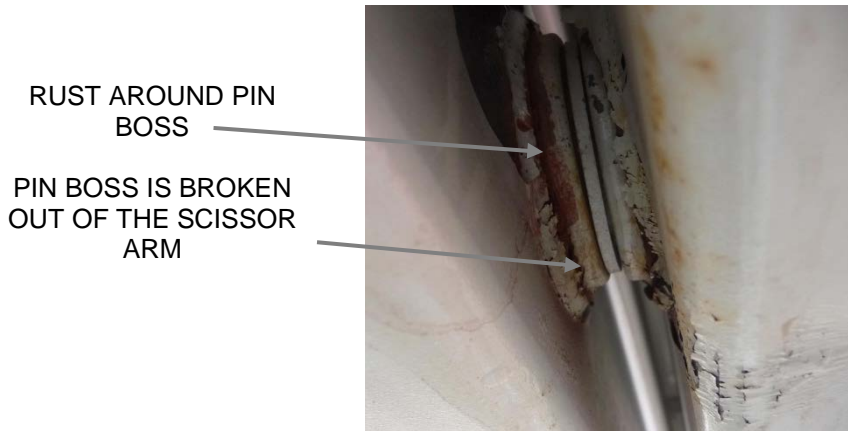
SKYJACK TECHNICAL SERVICE 3451 SWENSON AVE. ST. CHARLES, IL. 60174  
TOLL FREE: **800-275-9522** PHONE: 630-262-0005 FAX: 630-262-0006

**SCISSOR ARM PIVOT PINS – INSPECTION**  
**APPLIES TO: ALL SKYJACK SCISSOR LIFT MODELS**

Samples of pin connections showing damage (Figure 4 and Figure 5) are shown below.



**Figure 4: Scissor end pin connection - damaged**



**Figure 5: Center pivot pin connection – damaged**

Scissor end pin connections showing symptoms of damage must be inspected after removing the applicable pins and bushings. The scissor bore should also be inspected at this time for any signs of damage, specifically elongation or ovality of the hole. Provided there is no structural damage to the scissor arms, the pins and bushings can be replaced with new components.

Any units with structural damage to any pin connection or scissor arm must be **immediately removed from service** and repaired by a qualified technician. Contact Skyjack Service for direction on how to repair the unit.

If you require further information regarding this supplement, please contact Skyjack Service at 1-800-275-9522 or 44 1691 676 235. You may e-mail questions to [service@skyjack.com](mailto:service@skyjack.com).